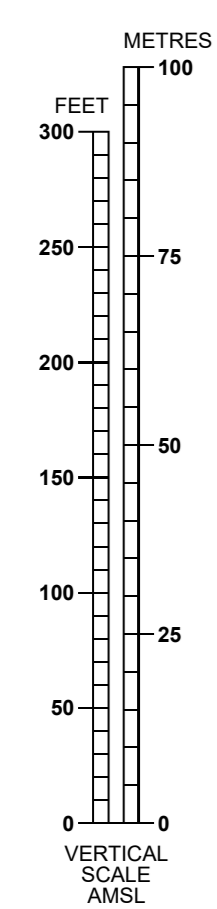


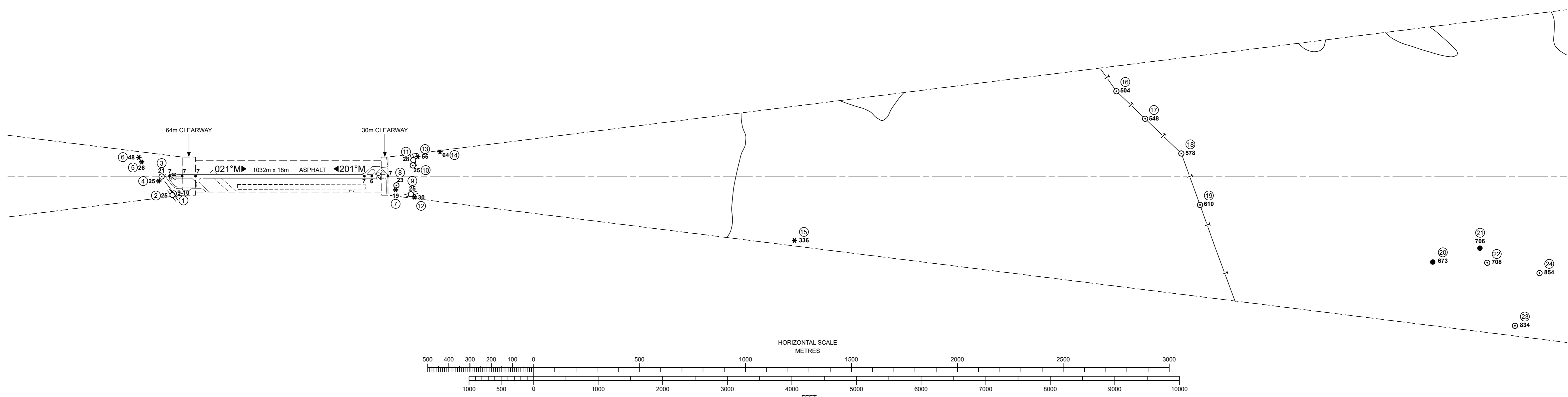
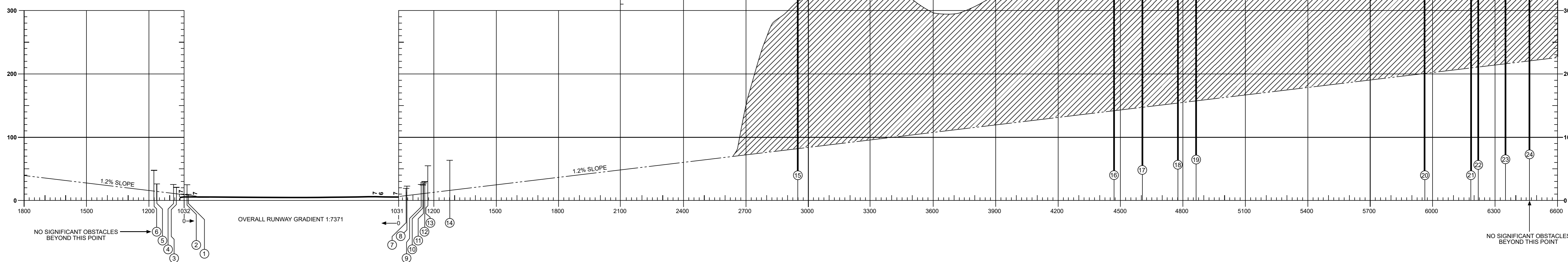
MAGNETIC VARIATION 1°E (2022)



RUNWAY 02-20

DECLARED DISTANCES

RWY 02		RWY 20
1002	TAKE-OFF RUN AVAILABLE	908
1001	ACCELERATE-STOP DISTANCE AVAILABLE	908
1031	TAKE-OFF DISTANCE AVAILABLE	971
838	LANDING DISTANCE AVAILABLE	798



Obstacle Number	Survey Number	Description	Latitude	Longitude	Altitude (M)	Altitude (ft)
1	4339	FENCE	504952.63N	0001755.42W	2.88	9.45
1a	4340	FENCE	504952.58N	0001755.69W	3.01	9.88
2	4424	RAILWAY-4.0M	504952.34N	0001755.17W	7.62	25.00
1b	4345	FENCE	504952.01N	0001758.93W	3.09	10.14
3	5394	CCTV	504951.84N	0001800.30W	5.35	17.55
3a	5392	BUSH	504951.68N	0001800.24W	6.35	20.83
4	5389	BUSH	504951.18N	0001759.53W	7.76	25.46
5	5401	TREE	504949.84N	0001805.31W	7.99	26.21
6	5650	TREE	504949.68N	0001806.60W	14.51	47.61

Obstacle Number	Survey Number	Description	Latitude	Longitude	Altitude (M)	Altitude (ft)
7	5307	SHRUB	505024.30N	0001736.54W	5.83	19.13
8	5309	CCTV	505024.66N	0001737.47W	6.54	21.46
8a	5308	BUSH	505024.65N	0001737.26W	6.99	22.93
9	2314	MOBILE OBST	505026.21N	0001734.21W	7.67	25.16
10	4361	ROAD SIGN	505028.10N	0001740.50W	7.57	24.84
11	2322	MOBILE OBST	505028.47N	0001741.67W	8.47	27.79
12	5864	TREE	505026.57N	0001733.25W	9.14	29.99
13	5808	TREE	505029.30N	0001742.01W	16.79	55.09
14	5830	TREE	505032.73N	0001741.12W	18.92	62.07
14a	5831	TREE	505032.76N	0001740.84W	19.39	63.62
15	3034	TREE	505118.10N	0001649.80W	101.27	332.25
15a	3035	TREE	505118.15N	0001649.55W	101.62	333.40
15b	3036	TREE	505118.32N	0001649.32W	102.32	335.70
16	1046	PYLON	505212.21N	0001654.74W	153.53	503.71
17	1047	PYLON	505214.75N	0001646.01W	166.89	547.54
18	1048	PYLON	505217.94N	0001635.00W	176.11	577.79
19	1049	PYLON	505217.70N	0001621.79W	185.94	610.04
20	1071	CHIMNEY	505247.54N	0001548.30W	205.16	673.10
21	1073	CHIMNEY	505255.02N	0001547.22W	215.16	705.91
22	1074	AERIAL	505255.24N	0001543.30W	215.74	707.81
23	4322	MAST	505255.63N	0001526.67W	254.31	834.35
24	4319	MAST	505302.08N	0001536.32W	260.30	854.00

LEGEND

	PLAN	PROFILE
IDENTIFICATION NUMBER	⊙	⊙
HEIGHT AMSL	23	⊙
POLE, TOWER, SPIRE, ANTENNA, ETC.	⊙	⊙
CHIMNEY	●	●
TREE	*	*
FENCE	—○—	—○—
MOBILE OBSTACLE	—○—	—○—
TERRAIN PENETRATING OBSTACLE PLANE	⬭	⬭

ORDER OF ACCURACY: Horizontal 3m; Vertical 1ft
CHANGE: NEW SURVEY
Aerodrome information current : DECEMBER 2023
Based on survey dated : APRIL 2023
Chart effective date : 22 JANUARY 2024

