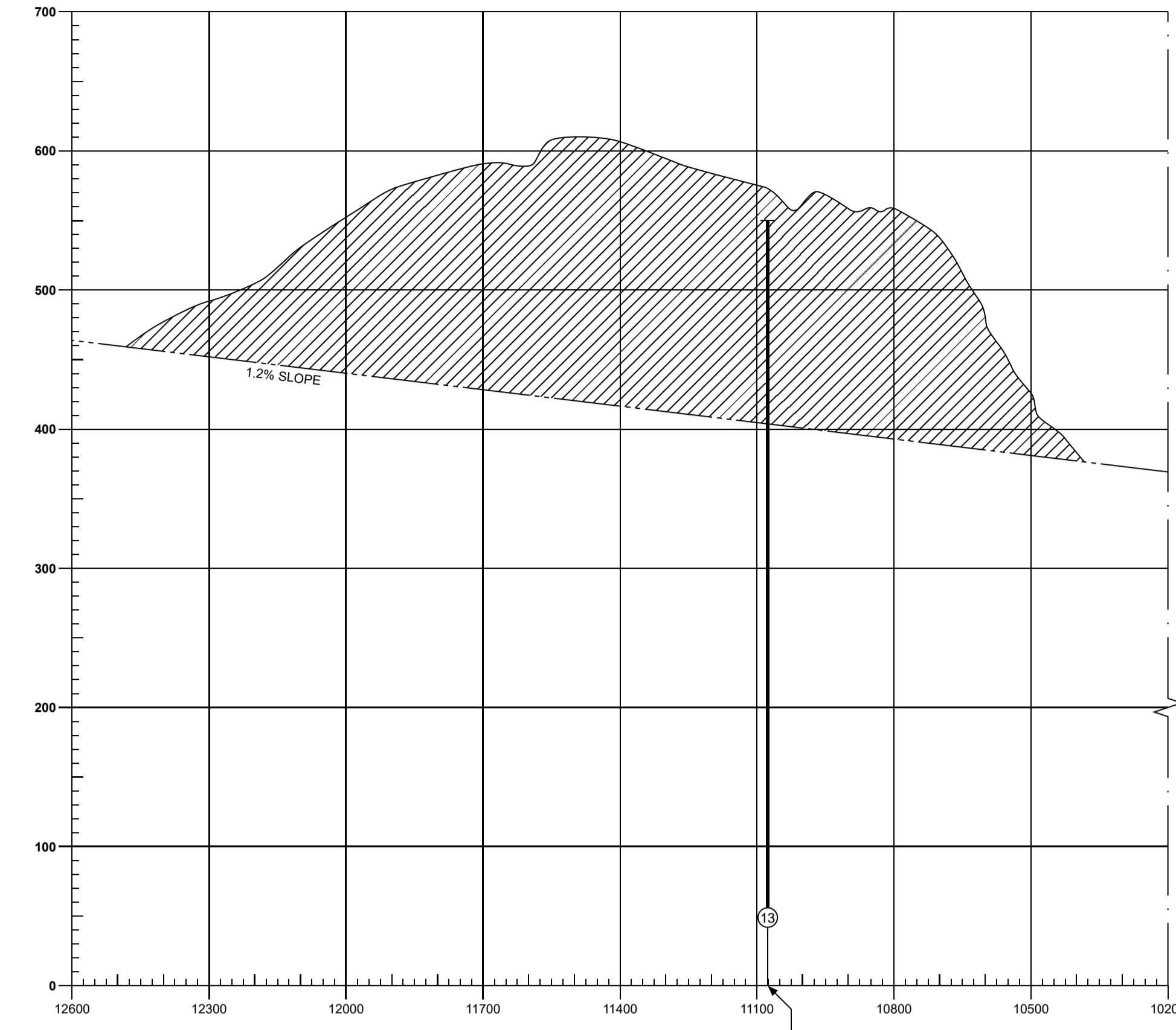
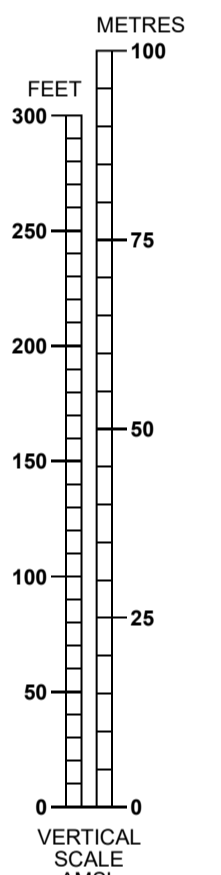
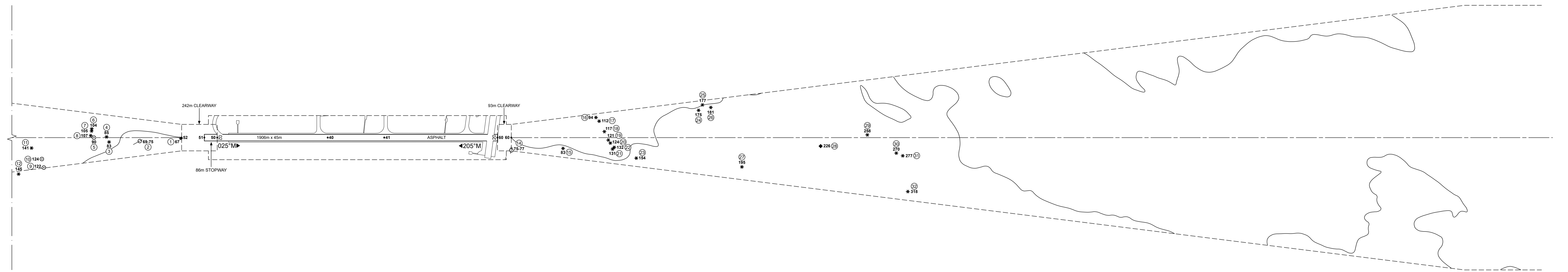
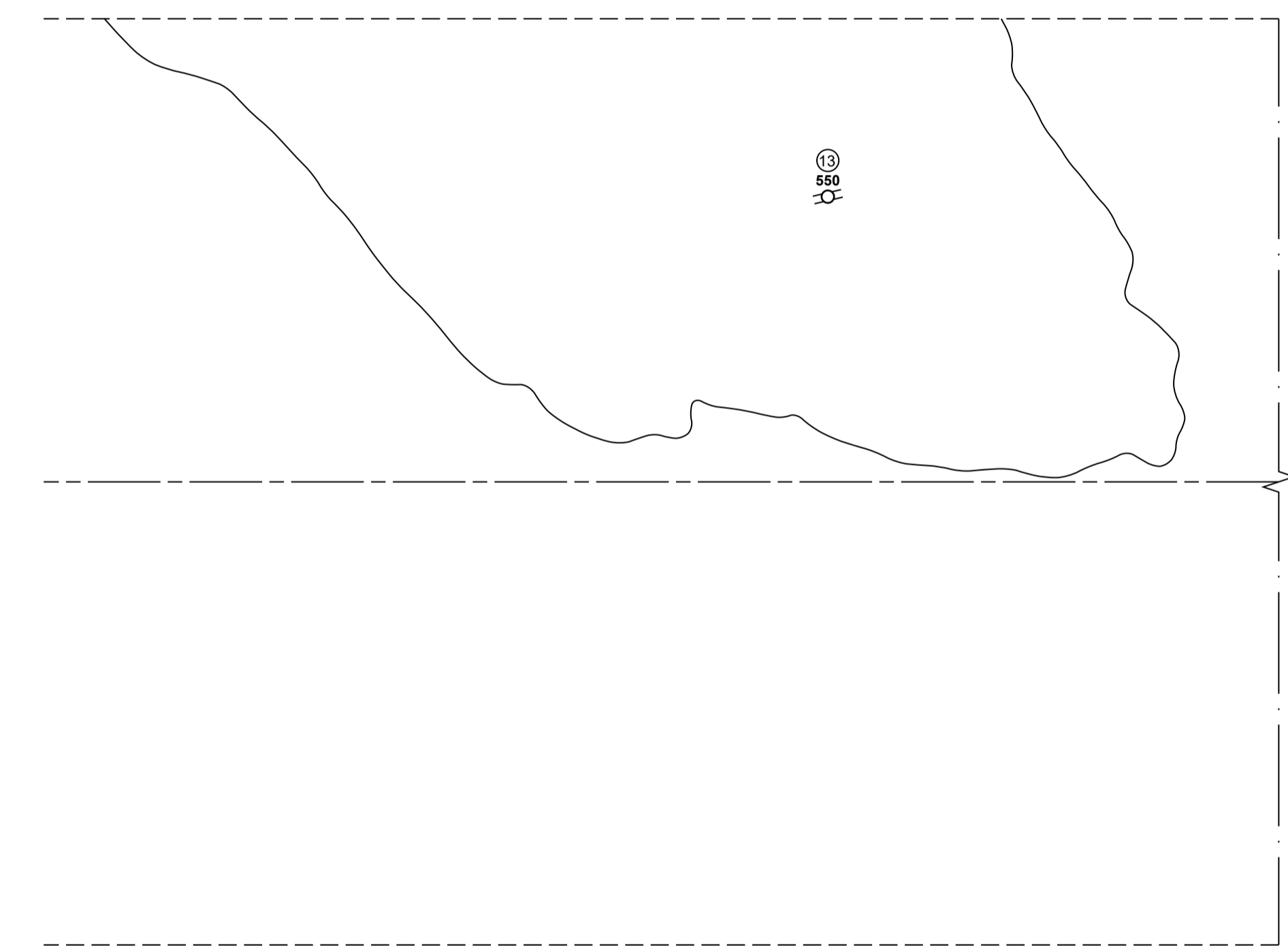
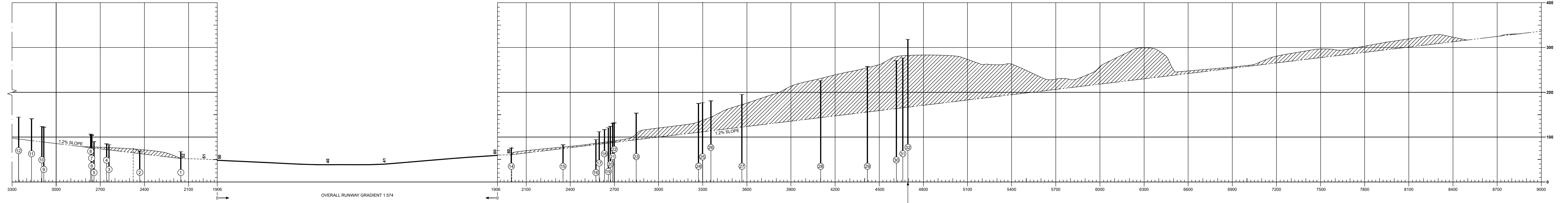


MAGNETIC VARIATION 2°W (2022)

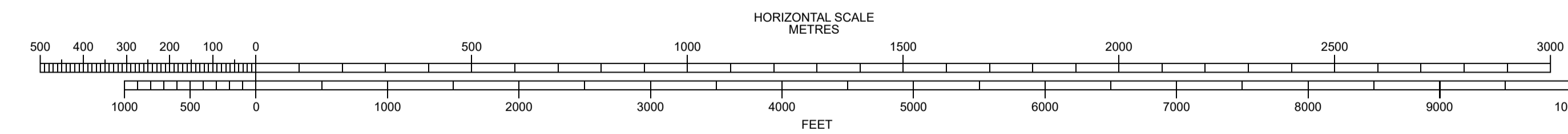


RUNWAY 02-20

DECLARED DISTANCES	
RWY 02	RWY 20
1906 TAKE-OFF RUN AVAILABLE	1906
1906 ACCELERATE-STOP DISTANCE AVAILABLE	1991
1999 TAKE-OFF DISTANCE AVAILABLE	2147
1825 LANDING DISTANCE AVAILABLE	1906



Obstacle Number	Survey Number	Description	Latitude	Longitude	Altitude (M)	Altitude (ft)
1	4388	OTHER-BUSH	552908.4099N	0043521.8297W	20.54	67.39
2	2021	FENCE	552859.9108N	0043527.3012W	20.93	68.67
2a	2023	FENCE	552858.2837N	0043527.0781W	22.73	74.57
3	1974	TREE	552853.8523N	0043531.7455W	25.27	82.91
4	1948	TREE	552853.8095N	0043533.9643W	25.91	85.01
5	1904	OTHER-POST	552850.9988N	0043535.6423W	27.34	89.70
6	1851	TREE	552851.3381N	0043539.0953W	31.66	103.87
7	1862	TREE	552851.1205N	0043538.3716W	31.97	104.89
8	1880	TREE	552850.5226N	0043536.8725W	32.54	106.76
9	1950	OTHER-LAMP POST	552838.2616N	0043532.8590W	37.29	122.34
10	1878	OTHER-LAMP POST	552838.6268N	0043536.1983W	37.76	123.88
11	1800	TREE	552837.5215N	0043541.7086W	42.89	140.72
12	1902	TREE	552832.6141N	0043534.4855W	44.11	144.72
13	1243	OTHER-TRACK	552451.5020N	0043915.2351W	167.66	550.07



Obstacle Number	Survey Number	Description	Latitude	Longitude	Altitude (M)	Altitude (ft)
14	2389	FENCE	553013.8270N	0043426.1158W	22.92	75.20
14a	2378	FENCE	553014.0546N	0043426.6015W	23.61	77.46
15	2510	OTHER-HEDGE	553024.3995N	0043418.7223W	25.16	82.55
16	2444	TREE	553033.7591N	0043424.5721W	28.70	94.16
17	2469	TREE	553034.0731N	0043422.7508W	34.16	112.07
18	2524	TREE	553034.2082N	0043418.2448W	35.60	116.80
19	2574	TREE	553034.2521N	0043414.6172W	36.86	120.93
20	2597	TREE	553034.3942N	0043413.2557W	37.83	124.11
21	2630	TREE	553034.3092N	0043410.7566W	39.87	130.81
22	2623	TREE	553034.7945N	0043411.1270W	40.16	131.76
23	2757	TREE	553038.2758N	0043403.8653W	46.84	153.67
24	2648	TREE	553055.0347N	0043411.0913W	53.34	175.00
25	2625	TREE	553056.3128N	0043412.4208W	53.90	176.84
26	2670	TREE	553057.7632N	0043410.2114W	55.12	180.84
27	3048	TREE	553058.7529N	0043344.2833W	59.42	194.95
28	3099	BUILDING	553116.4345N	0043339.3754W	68.78	225.66
29	3124	TREE	553126.8269N	0043336.0639W	78.58	257.81
30	3167	TREE	553131.0352N	0043325.0794W	82.40	270.34
31	3174	TREE	553132.1078N	0043323.1297W	84.29	276.54
32	3231	TREE	553129.9575N	0043309.6314W	97.01	318.27

LEGEND

	PLAN	PROFILE
IDENTIFICATION NUMBER	①	①
HEIGHT AMSL	107	107
POLE, TOWER, SPIRE, ANTENNA, ETC.	⊙	⊙
BUILDING	◆	◆
TREE	*	*
FENCE	—○—	—○—
MOBILE OBSTACLE	—○—	—○—
TERRAIN PENETRATING OBSTACLE PLANE	○	○

ORDER OF ACCURACY: Horizontal 3m; Vertical 1ft
CHANGE: NEW SURVEY
Aerodrome information current : JULY 2024
Based on survey dated : APRIL 2023
Chart effective date : 10 SEPTEMBER 2024

