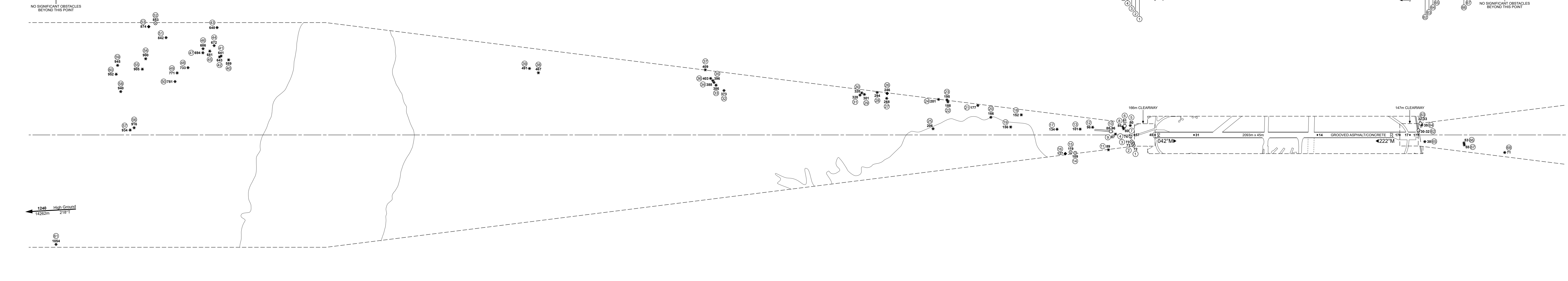
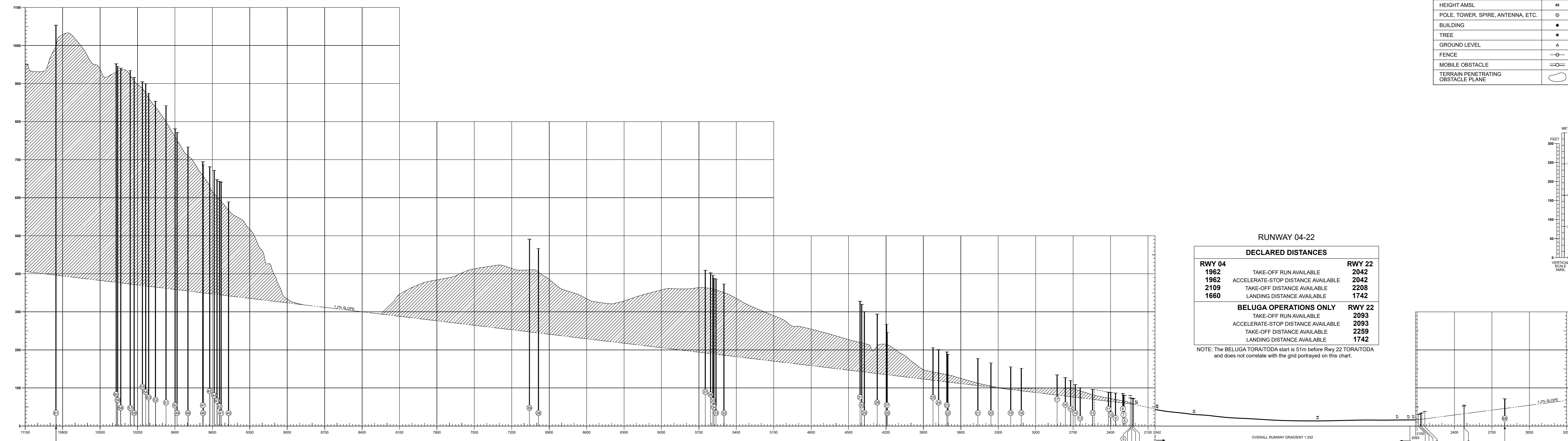


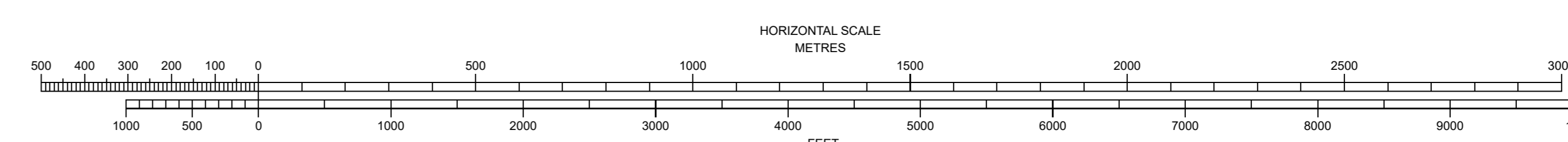
MAGNETIC VARIATION 1°W (2022)



Obstacle Number	Survey Number	Description	Latitude	Longitude	Altitude (M)	Altitude (ft)
1	6886	LAMP POST	531010.3067N	0025918.2442W	21.93	71.95
2	6885	LAMP POST	531010.4652N	0025919.2221W	22.22	72.90
3	6884	LAMP POST	531010.6108N	0025920.1297W	22.25	73.00
4	9735	BLAST FENCE	531011.2114N	0025922.0839W	22.48	73.75
5	12630	TREE	531013.0522N	0025925.6823W	24.34	79.87
6	734	MOBILE OBST	531011.9051N	0025927.1629W	24.56	80.58
7	12876	HEDGE	531011.1723N	0025926.5197W	24.42	80.11
8	12632	TREE	531011.3903N	0025927.3637W	25.36	83.21
8a	12633	TREE	531011.4162N	0025927.4421W	26.01	85.34
9	12621	TREE	531008.6949N	0025927.1035W	26.40	86.60
10	3071	MOBILE OBST	531008.2404N	0025929.2990W	26.78	87.86
11	11985	TREE	531004.6458N	0025923.9854W	27.00	88.59
10a	3072	MOBILE OBST	531007.3177N	0025931.0210W	27.56	90.42
10b	3073	MOBILE OBST	531006.4543N	0025932.5645W	28.32	92.91
10c	3074	MOBILE OBST	531005.2665N	0025934.4408W	29.32	96.19
12	12872	HEDGE	531005.3929N	0025935.7961W	29.27	96.02
13	12869	TREE	531002.6309N	0025928.7204W	30.67	100.62
14	12058	UTILITY POLE	530957.6115N	0025932.9917W	33.17	108.81
15	12062	STREETLIGHT	530956.8407N	0025933.9470W	36.36	119.30
16	12073	BUILDING AERIAL	530955.5544N	0025934.9283W	38.73	127.07
17	12863	TREE	530958.0856N	0025945.2319W	40.91	134.22
18	12880	TREE	530953.5369N	003000.0286W	46.20	151.58
19	12892	TREE	530949.3916N	0025959.0871W	47.40	155.52
20	12902	CONFER TREE	530947.1823N	003000.7843W	50.50	165.67
21	12909	TREE	530946.6297N	003001.5704W	53.97	177.07
22	12079	TREE	530941.3746N	003002.5169W	57.31	188.02
23	13038	TREE	530941.5243N	003002.9406W	59.35	194.71
24	13010	CONFER TREE	530939.9633N	003002.8472W	61.15	200.61
25	13014	TREE	530933.9104N	003002.4877W	62.70	205.70
26	12217	BUILDING CHIMNEY	530930.9226N	003004.9655W	75.03	246.17
27	12976	CONFER TREE	530929.9959N	003004.5022W	81.56	267.60
28	12978	TREE	530929.1448N	003004.1158W	89.70	294.29
29	13055	CONFER TREE	530926.3077N	003005.1046W	91.44	299.99
29a	13056	CONFER TREE	530926.2135N	003005.1775W	91.75	301.00
30	13058	CONFER TREE	530926.0411N	003005.3395W	97.48	319.82

Obstacle Number	Survey Number	Description	Latitude	Longitude	Altitude (M)	Altitude (ft)
31	12971	TREE	530925.3428N	003005.1317W	99.94	327.87
32	12377	TREE	530859.4756N	0030132.0790W	113.83	373.47
33	12374	TREE	530858.8285N	0030136.0787W	117.71	386.19
34	12373	TREE	530858.8966N	0030137.5557W	118.11	387.51
35	12372	TREE	530858.9714N	0030138.4630W	120.79	396.28
36	12371	TREE	530858.9126N	0030139.8058W	122.23	401.02
36a	12370	TREE	530859.0199N	0030140.0299W	122.76	402.75
37	12363	TREE	530859.3382N	0030144.1108W	124.70	409.11
38	10707	TREE	530826.1565N	0030230.3484W	142.28	466.80
39	10706	TREE	530825.1465N	0030234.2641W	144.34	473.56
39a	10705	TREE	530824.9079N	0030233.9354W	149.64	490.94
40	10980	TREE	530727.6849N	0030402.1154W	179.50	588.97
41	11514	TREE	530726.8754N	0030405.4853W	195.33	640.85
42	10981	TREE	530726.4033N	0030405.6215W	196.05	643.21
43	11510	TREE	530730.9070N	0030415.8687W	197.36	647.51
44	11513	TREE	530727.2741N	0030410.8138W	204.69	671.56
45	11515	TREE	530725.4804N	0030410.2893W	207.57	681.00
46	10983	TREE	530724.5670N	0030412.9351W	209.11	686.06
47	10984	TREE	530723.8474N	0030411.6960W	211.68	694.49
48	10990	TREE	530718.4031N	0030411.0389W	223.51	733.30
49	10993	TREE	530715.3805N	0030412.4002W	235.00	771.00
50	10996	TREE	530713.5131N	0030410.1768W	238.09	781.14
51	10989	TREE	530719.2020N	0030427.0149W	256.65	842.03
52	4200	TELE POLE	530719.5775N	0030434.6753W	260.09	853.31
53	4201	BUILDING	530717.6809N	0030435.4790W	265.70	871.72
53a	4202	BUILDING	530717.6963N	0030435.6757W	266.54	874.48
54	10995	TREE	530711.6358N	0030425.8866W	274.28	899.67
55	10999	TREE	530709.2170N	0030423.4458W	275.76	904.72
56	11011	TREE	530657.6443N	0030406.6954W	279.18	915.94
57	11012	TREE	530656.4893N	0030407.0879W	284.80	934.38
58	10747	TREE	530701.1742N	0030422.2676W	286.64	940.42
59	10742	TREE	530705.0116N	0030431.6864W	288.12	945.28
60	10744	TREE	530703.2266N	0030429.1943W	290.16	951.97
61	10763	TREE	530622.5400N	0030350.8278W	321.11	1053.51

Obstacle Number	Survey Number	Description	Latitude	Longitude	Altitude (M)	Altitude (ft)
62	9887	BLAST FENCE	531108.6582N	0025802.5273W	9.27	30.41
62a	9881	BLAST FENCE	531108.7563N	0025802.3578W	9.69	31.79
62b	9882	BLAST FENCE	531108.0788N	0025800.7433W	9.74	31.96
63	9418	MOBILE OBST	531101.1763N	0025804.2015W	9.90	32.48
63a	9419	MOBILE OBST	531109.5663N	0025802.5671W	9.92	32.55
64	12720	TREE	531110.1891N	0025803.2964W	10.46	34.32
64a	12716	TREE	531110.4120N	0025803.6379W	10.57	34.67
65	12753	TREE	531107.9521N	0025757.0466W	11.71	38.42
65a	12754	TREE	531107.9411N	0025756.4713W	11.73	38.47
66	12731	TREE	531115.3912N	0025745.5489W	16.01	52.53
67	12733	TREE	531115.1196N	0025744.7869W	16.64	54.60
68	12727	TREE	531121.7473N	0025730.8745W	21.73	71.28



ORDER OF ACCURACY: Horizontal 3m; Vertical 1ft
CHANGE: NEW SURVEY
Aerodrome information current: AUGUST 2024
Based on survey dated: OCTOBER 2023
Chart effective date: 19 SEPTEMBER 2024