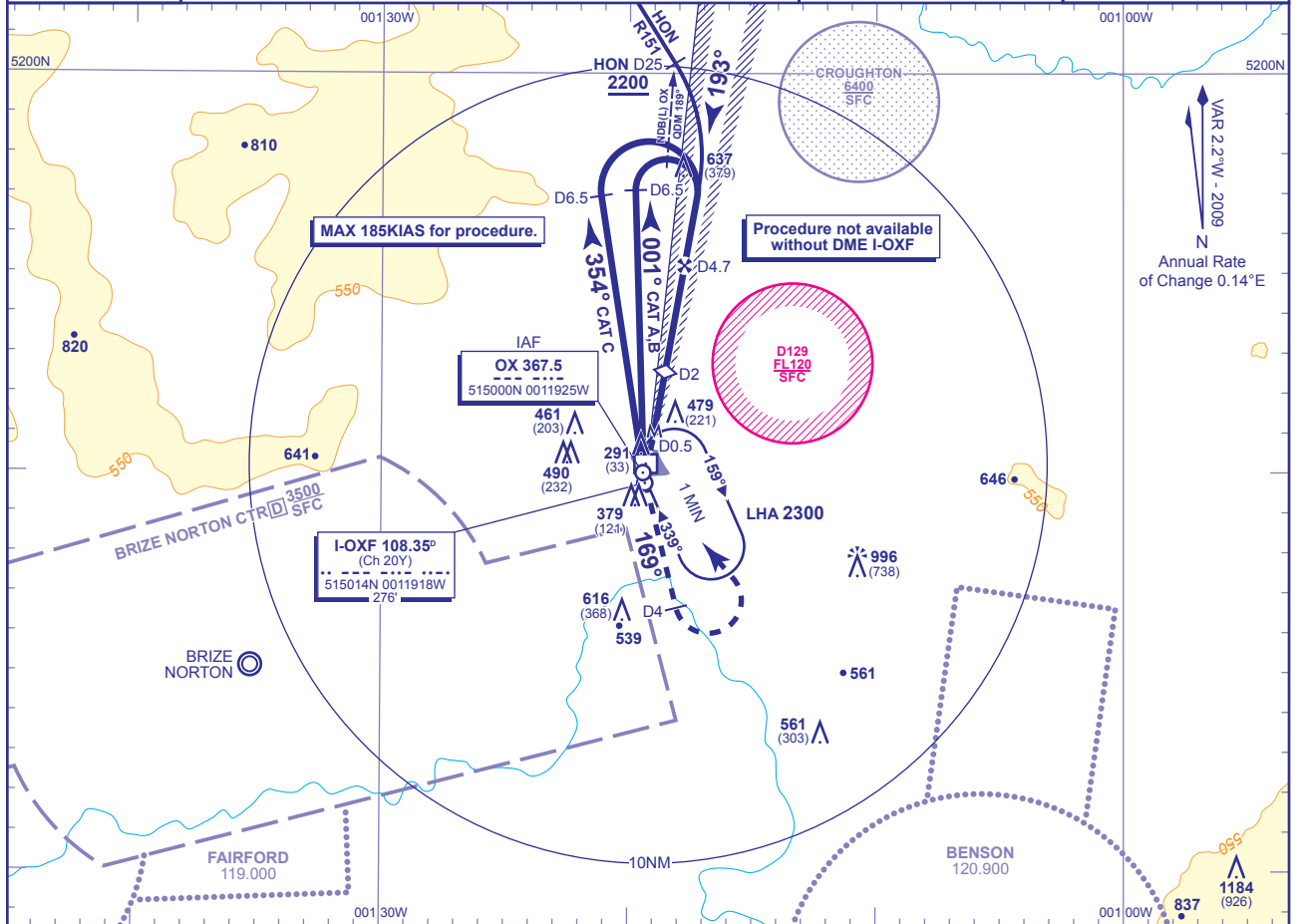


INSTRUMENT APPROACH CHART - ICAO

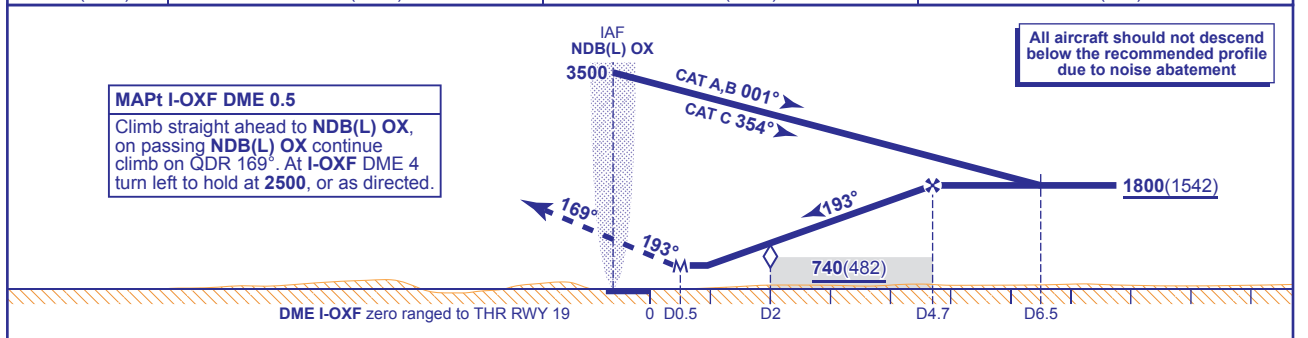
**OXFORD/KIDLINGTON
LOC/DME/NDB(L)
RWY 19**
(ACFT CAT A,B,C)

	APP 125.325	OXFORD APPROACH	AD ELEVATION 270
	TWR 133.425	OXFORD TOWER	THR ELEVATION 258
	121.950	OXFORD GROUND	OBSTACLE ELEVATION 1184 AMSL (926) (ABOVE THR)
	ATIS 136.225	OXFORD ATIS	BEARINGS ARE MAGNETIC
			TRANSITION ALTITUDE 3000



RECOMMENDED PROFILE Gradient 5.2%, 320FT/NM

DME I-OXF	4	3	2 (SDF)
ALT(HGT)	1580(1322)	1260(1002)	940(682)



Aircraft Category	A	B	C	Rate of descent	G/S KT	160	140	120	100	80
OCA (OCH) Procedure	600(342)	600(342)	600(342)		FT/MIN	850	750	640	530	430
VM(C)OCA (OCH AAL) Total Area	800(530)	800(530)	1100(830)							

DIRECT ARRIVAL VIA VOR HON R151
Intercept and follow VOR HON R151 **not below MSA**. At lead NDB(L) OX QDM 189° (HON DME 25) turn right to establish on localiser. When established descend to cross FAF (I-OXF DME 4.7) at **1800(1542)**, then continue as for main procedure.

NOTE Aircraft will normally be required to hold not lower than **3500** or equivalent FL.

WARNING Use of this procedure is subject to ATC Oxford/Kidlington ensuring that Danger Area EG D129 is inactive above **2500**.

CHANGE: OBSTACLES.

AERO INFO DATE 18 NOV 09