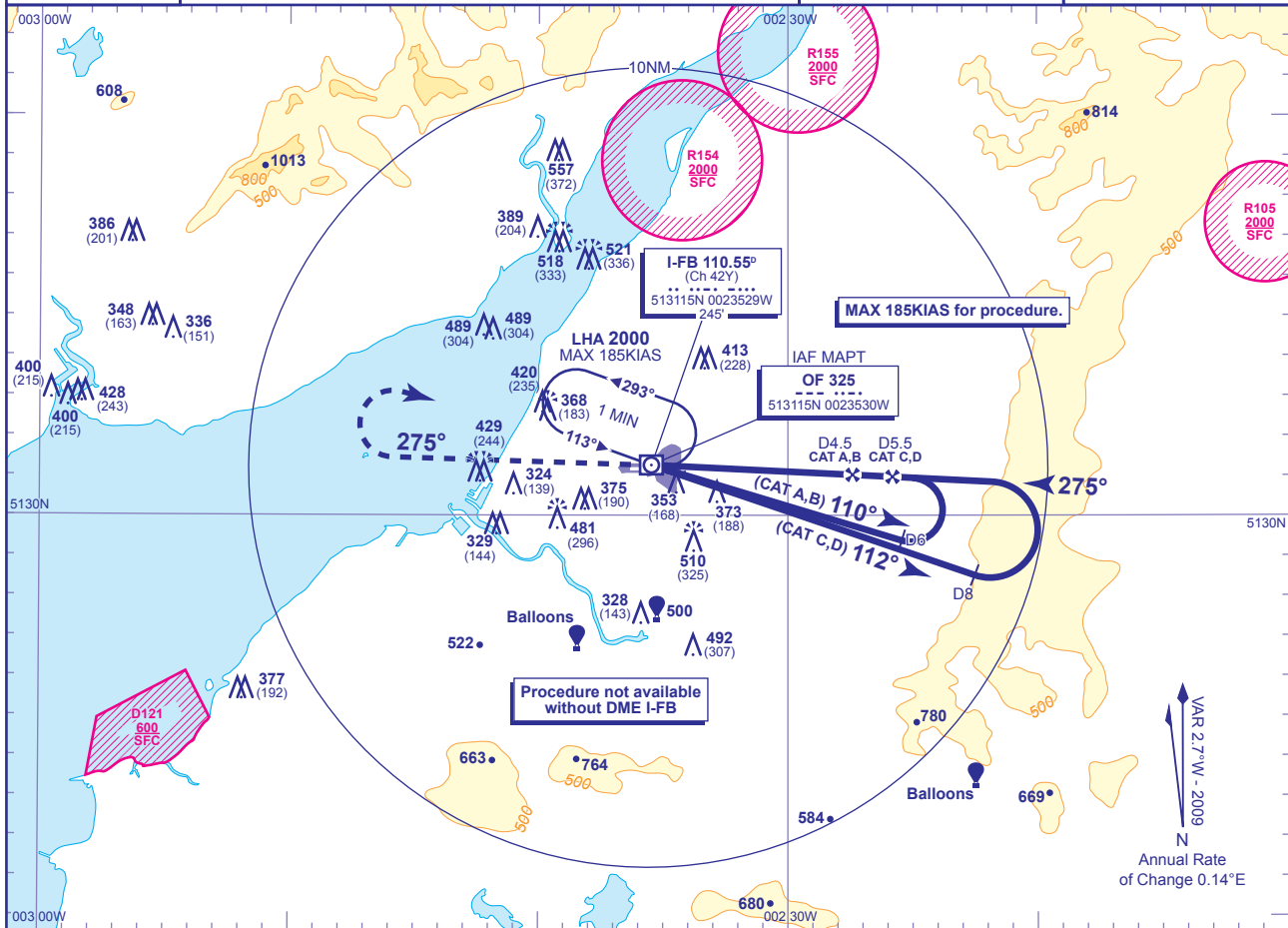


INSTRUMENT APPROACH CHART - ICAO

BRISTOL FILTON
NDB(L)/DME
RWY 27
 (ACFT CAT A,B,C,D)

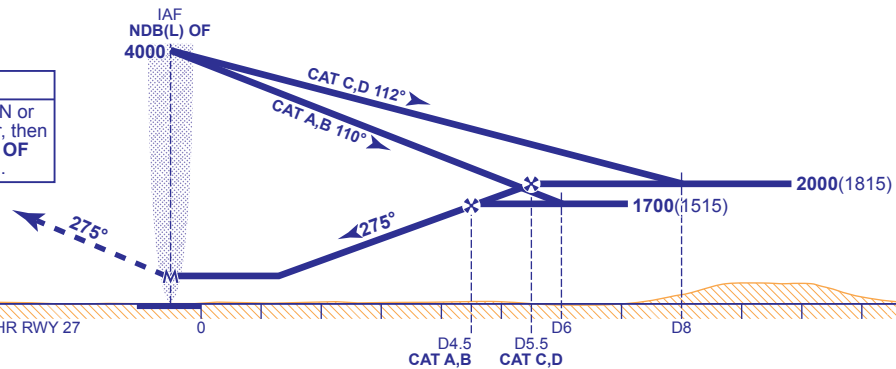
	APP 122.725	FILTON APPROACH	AD ELEVATION 225
	TWR 132.350	FILTON TOWER	THR ELEVATION 185
	RAD 122.725	FILTON RADAR	OBSTACLE ELEVATION 557 AMSL (372) (ABOVE THR)
	127.975	FILTON DIRECTOR	BEARINGS ARE MAGNETIC
			TRANSITION ALTITUDE 6000



RECOMMENDED PROFILE Gradient 5.2%, 320FT/NM

DME I-FB	5	4	3	2
ALT(HGT)	1840(1655)	1520(1335)	1200(1015)	880(695)

MAPt NDB(L) OF
 Climb straight ahead for 2 MIN or to 3000 whichever is the later, then turn right to return to NDB(L) OF to hold at 3000 or as directed.



Aircraft Category	A	B	C	D	Rate of descent	G/S KT	160	140	120	100	80
						FT/MIN	860	750	640	540	430
OCA (OCH) Procedure	660(475)	660(475)	660(475)	660(475)							
VM(C)OCA (OCH AAL) Total Area	690(465)	810(585)	910(685)	920(695)							

- NOTE 1** Lowest altitude to commence procedure from hold is 3000 (subject to ATC approval).
NOTE 2 Aircraft will normally be required to hold not lower than 4000.
NOTE 3 FAT offset by 3° and intercepts RWY C/L at 1.0NM before THR 27.

CHANGE: MAPT.

AERO INFO DATE 21 DEC 09