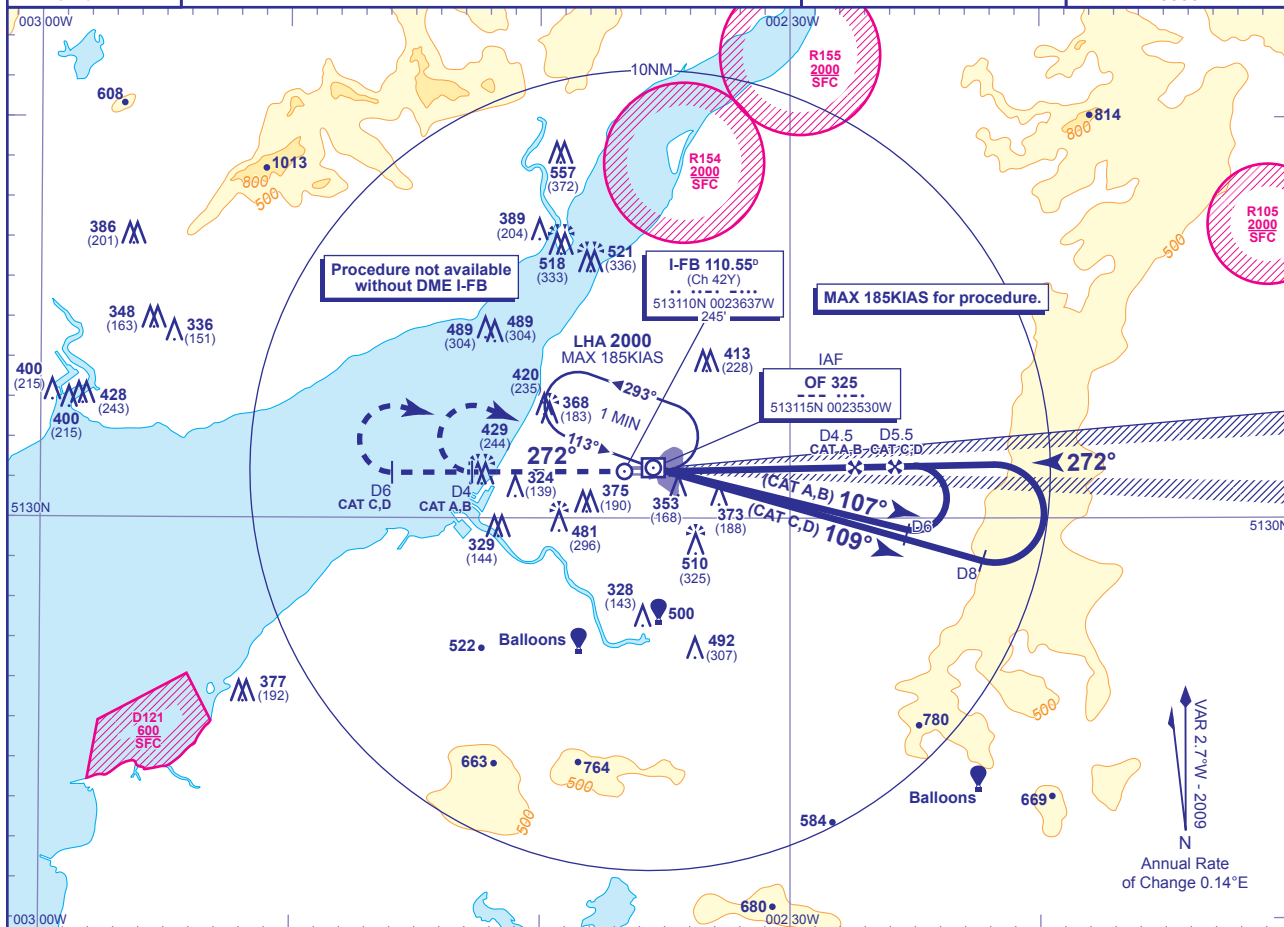


**INSTRUMENT APPROACH CHART - ICAO**

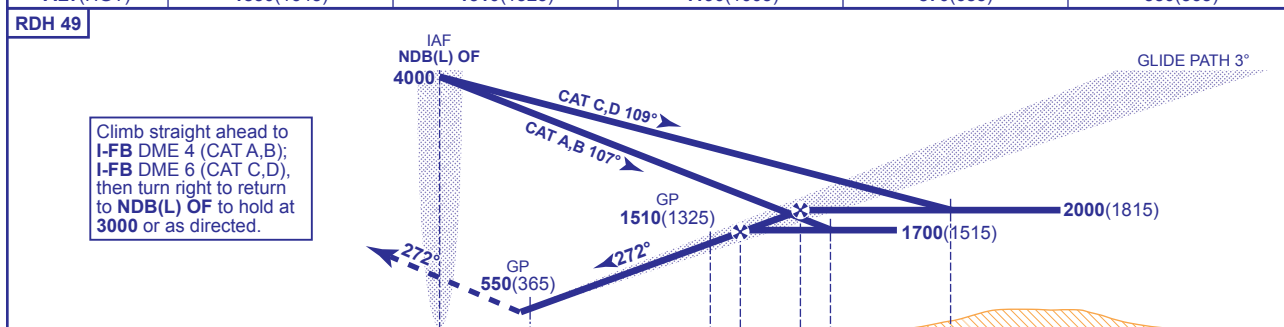
**BRISTOL FILTON  
ILS/DME/NDB(L)  
RWY 27**  
(ACFT CAT A,B,C,D)

	APP 122.725	FILTON APPROACH	AD ELEVATION 225
	TWR 132.350	FILTON TOWER	THR ELEVATION 185
	RAD 122.725	FILTON RADAR	OBSTACLE ELEVATION 557 AMSL (372) (ABOVE THR)
	127.975	FILTON DIRECTOR	BEARINGS ARE MAGNETIC
			TRANSITION ALTITUDE 6000



**RECOMMENDED PROFILE GLIDE PATH 3°, 320FT/NM**

DME I-FB	5	4	3	2	1
ALT(HGT)	1830(1645)	1510(1325)	1190(1005)	870(685)	550(365)



DME I-FB zero ranged to THR RWY 27

	0	D1	D4.5	D6	D8
		CAT A,B	CAT C,D		

Aircraft Category	A	B	C	D	Rate of descent FT/MIN	G/S KT	160	140	120	100	80
OCA (OCH)	UNCAT	470(285)	480(295)	490(305)		500(315)	850	740	640	530	420
VM(C)OCA (OCH AAL)	Total Area	690(465)	810(585)	910(685)	920(695)						

**NOTE 1** Lowest altitude to commence procedure from hold is 3000 (subject to ATC approval).  
**NOTE 2** Aircraft will normally be required to hold not lower than 4000.

**CHANGE:** MAG VAR. PROCEDURE. AD ELEVATION. RECOMMENDED PROFILE. MSA. OBSTACLES. NAV AID COORDINATES.