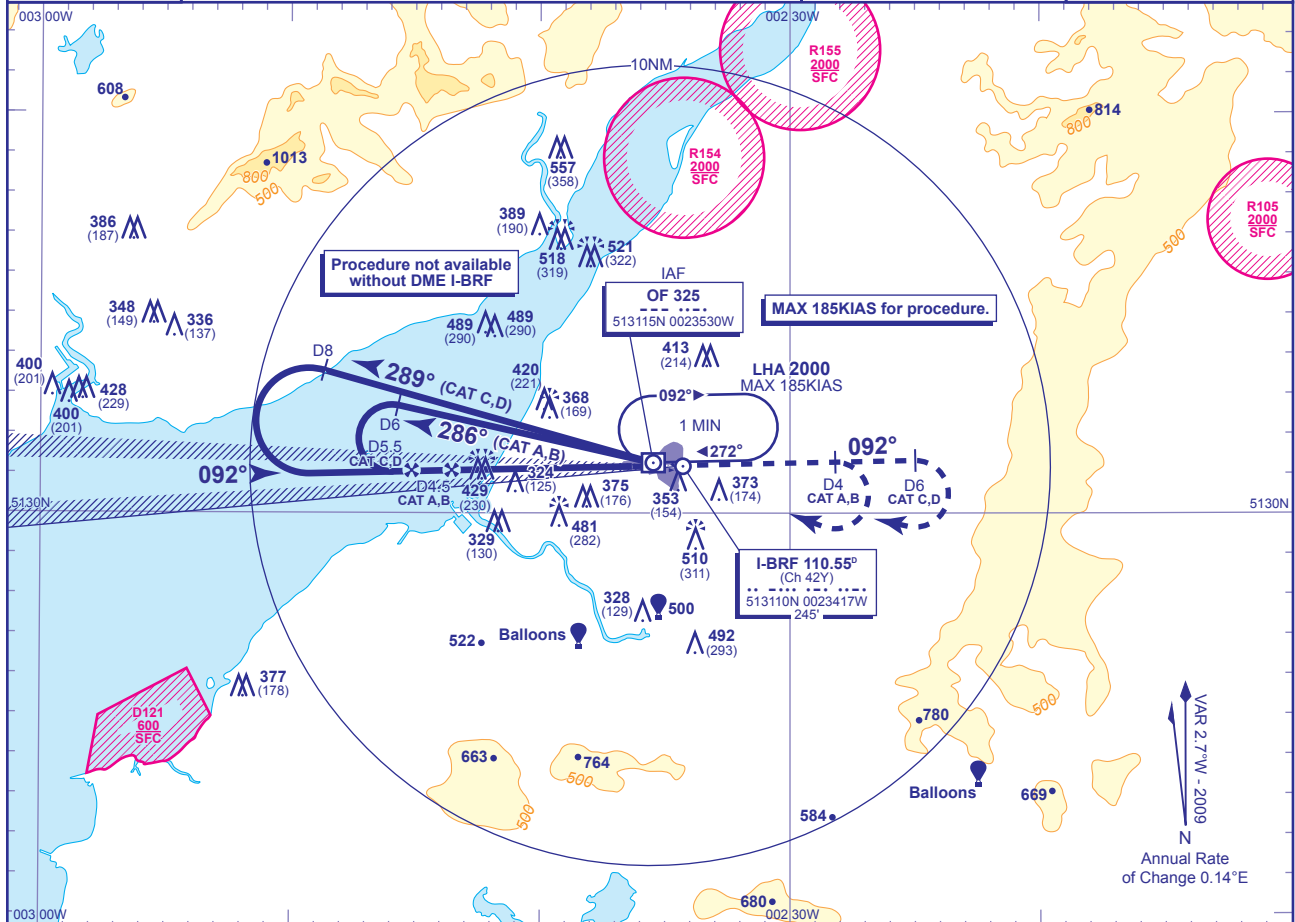


INSTRUMENT APPROACH CHART - ICAO

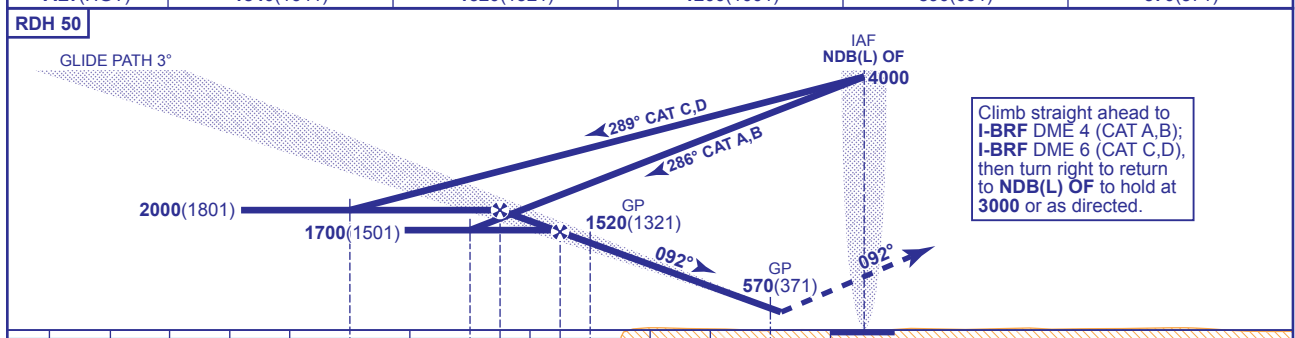
**BRISTOL FILTON
ILS/DME/NDB(L)
RWY 09**
(ACFT CAT A,B,C,D)

	APP 122.725	FILTON APPROACH	AD ELEVATION 225
	TWR 132.350	FILTON TOWER	THR ELEVATION 199
	RAD 122.725	FILTON RADAR	OBSTACLE ELEVATION 557 AMSL (358) (ABOVE THR)
	127.975	FILTON DIRECTOR	BEARINGS ARE MAGNETIC
			TRANSITION ALTITUDE 6000



RECOMMENDED PROFILE GLIDE PATH 3°, 320FT/NM

DME I-BRF	5	4	3	2	1
ALT(HGT)	1840(1641)	1520(1321)	1200(1001)	890(691)	570(371)



		D8	D6	D5.5	D4.5	D4	D1	0	DME I-BRF zero ranged to THR RWY 09					
		CAT C,D			CAT A,B									
Aircraft Category		A	B	C	D	Rate of descent FT/MIN	G/S KT	160	140	120	100	80		
OCA (OCH)	UNCAT	480(281)	490(291)	500(301)	510(311)		850	740	640	530	420			
VM(C)OCA (OCH AAL)	Total Area	690(465)	810(585)	910(685)	920(695)									

NOTE 1 Lowest altitude to commence procedure from hold is 3000 (subject to ATC approval).
NOTE 2 Aircraft will normally be required to hold not lower than 4000.

CHANGE: MAG VAR. PROCEDURE. AD ELEVATION. RECOMMENDED PROFILE. MSA. OBSTACLES. NAV AID COORDINATES.