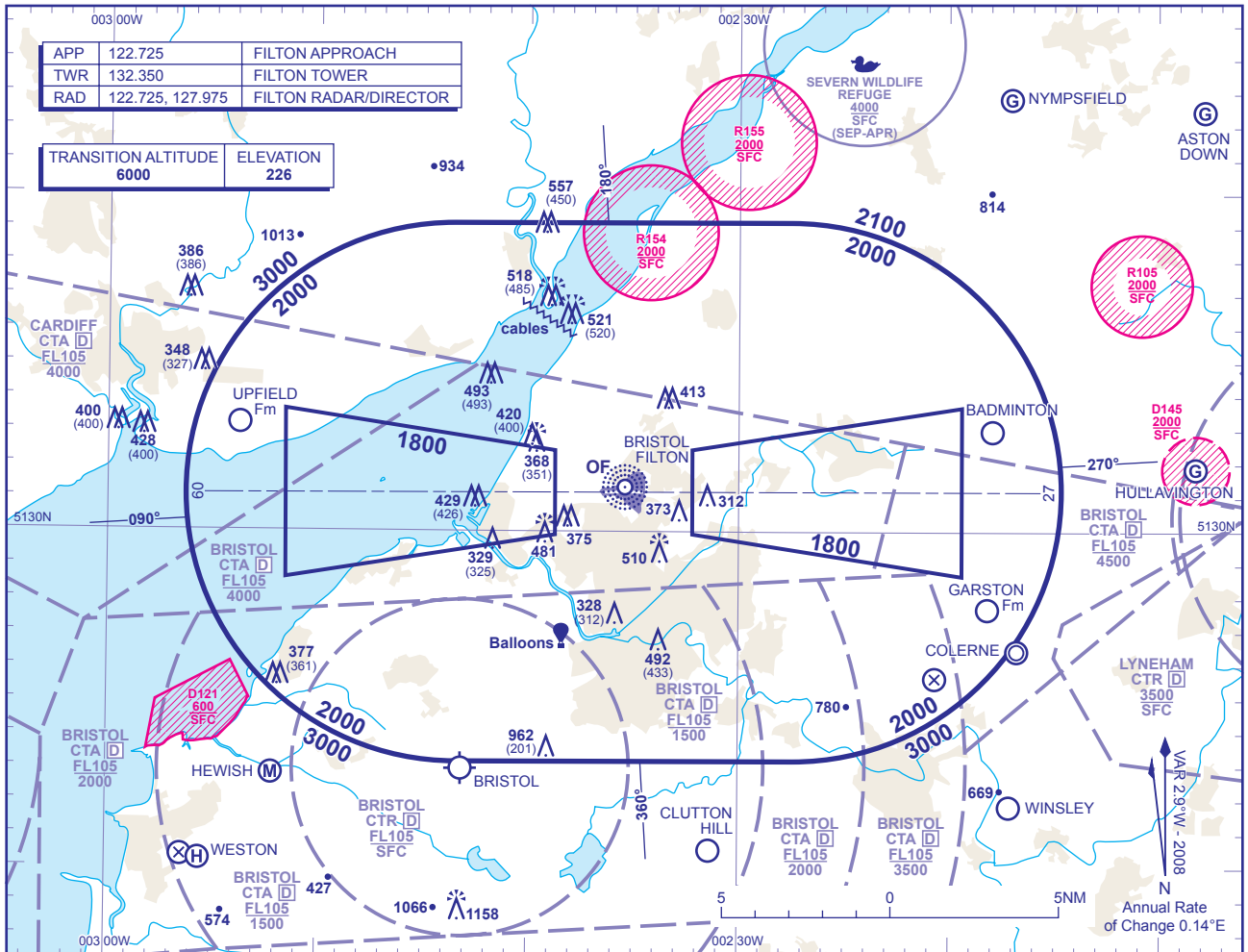


**ATC SURVEILLANCE MINIMUM ALTITUDE CHART - ICAO**

BEARINGS, TRACKS AND RADIALS ARE MAGNETIC  
ELEVATIONS IN FEET AMSL **982**  
HEIGHTS IN FEET AGL (328)

**BRISTOL FILTON**



**MINIMUM INITIAL ALTITUDE**

Within the ATC Surveillance Minimum Altitude area the minimum initial altitude to be allocated by the approach radar controller is **2000** in the sector defined by the lateral limits; 513908N 0024334W - 513911N 0022730W thence clockwise by an arc of a circle radius 8NM centred on 513111N 0022728W to 512311N 0022726W - 512309N 0024324W thence clockwise by an arc of a circle radius 8NM centred on 513108N 0024329W to 513908N 0024334W. Further descent to **1800** may be given within the Approach Areas shown when on 40° leg or Final Approach.

**OUTSIDE THE DESIGNATED ATC SURVEILLANCE MINIMUM ALTITUDE AREA**

The minimum altitude to be allocated by the approach radar controller will be either the Minimum Sector Altitude, or **1000** above any fixed obstacles:  
a) within 5NM of the aircraft\*, or  
b) within the sector 15NM ahead of and within 20° either side of the aircraft's track\*.  
\*When the aircraft is within 15NM of the radar antennae, the 5NM in a) and the 15NM in b) may be reduced to 3NM and 10NM respectively.

**LOSS OF COMMUNICATION PROCEDURES**

**Initial Approach**

Continue visually or by means of an appropriate approved final approach aid. If not possible proceed at **3000**, or last assigned level if higher, to **NDB(L) OF†**.

**Intermediate and Final Approach**

Continue visually or by means of an appropriate final approach aid. If not possible follow the Missed Approach Procedure to **NDB(L) OF†**.  
† In all cases where the aircraft returns to the holding facility the procedure to be adopted is the Basic Radio Failure Procedure detailed at ENR 1.1.3.

**GENERAL INFORMATION**

1. Levels shown are based on QNH.
2. Only significant obstacles and dominant spot heights area shown.
3. The minimum levels shown within the ATC Surveillance Minimum Altitude area ensure terrain clearance in conformity with Rule 33 of the Rules of the Air Regulations in respect of obstacles within the ATCSMA area.
4. Minimum Sector Altitudes are based on obstacles and spot heights within 25NM of the Aerodrome Reference Point.
5. Controlled airspace with a base in excess of **5000** or FL55, as appropriate, is not shown.
6. The ATC Surveillance service is provided by Primary and/or Secondary Radar equipment.
7. **This chart should only be used for the cross-checking of assigned altitudes whilst under radar control.**

CHANGE: TITLE. NOTES. NOTE 3. MAG VAR.

AERO INFO DATE 29 AUG 08

**INTENTIONALLY BLANK**