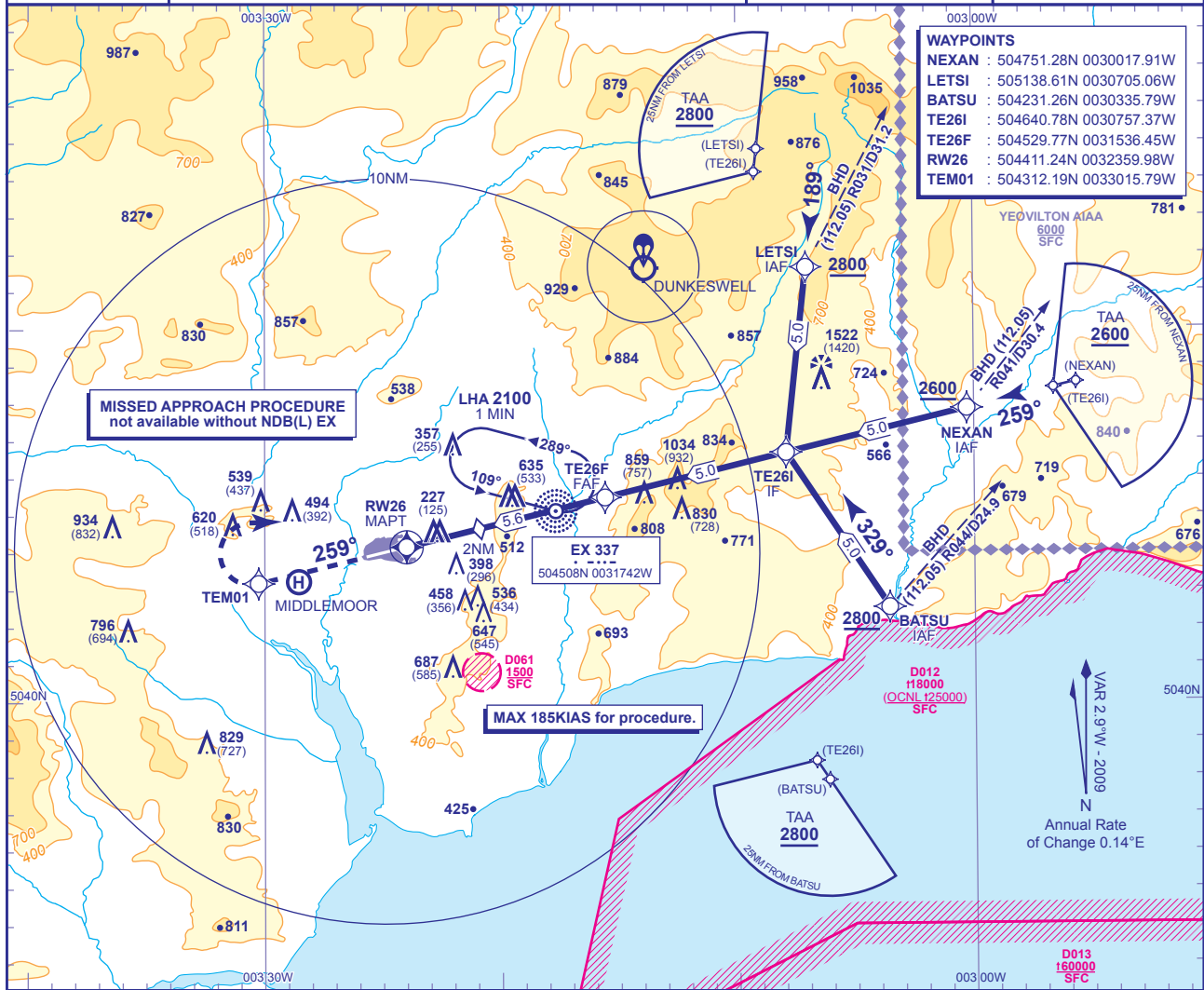


INSTRUMENT APPROACH CHART - ICAO

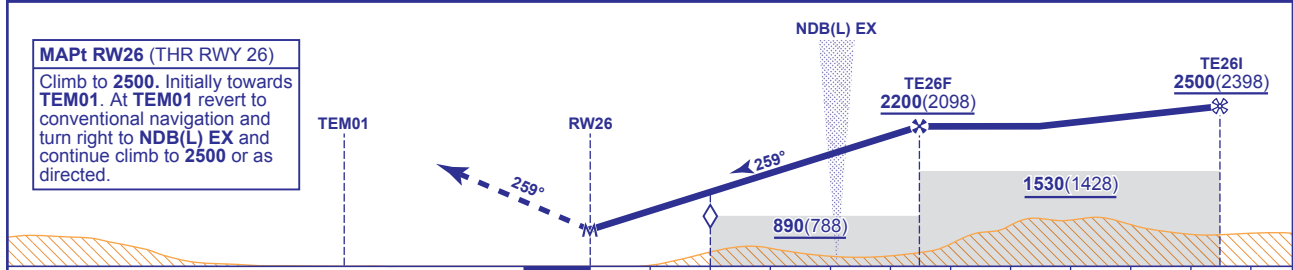
EXETER
RNAV (GNSS)
RWY 26
 (ACFT CAT A,B,C,D)

<p>MSA 25NM ARP</p>	APP 128.975	EXETER APPROACH	AD ELEVATION 102
	TWR 119.800	EXETER TOWER	THR ELEVATION 102
	RAD 128.975, 119.050	EXETER RADAR	OBSTACLE ELEVATION 1522 AMSL (1420) (ABOVE THR)
	ATIS 119.325	EXETER INFORMATION	BEARINGS ARE MAGNETIC
			TRANSITION ALTITUDE 3000



RECOMMENDED PROFILE Gradient 6.12%, 372FT/NM

NM to RW26	5	4	3	2(SDF)
ALT(HGT)	2020(1918)	1650(1548)	1280(1178)	900(798)



Aircraft Category	OCA (OCH)	LNAV	A	B	C	D	Rate of descent	G/S KT					
			630(528)	630(528)	630(528)	630(528)		160	140	120	100	80	
VM(C)OCA (OCH AAL)	Total Area	700(598)	880(778)	1090(988)	1090(988)			990	870	740	620	500	

NOTE 1 Clearance for Initial Approach via BATSU subject to Danger Area activity.
 2 See AD 2-EGTE-8-13 for data coding tables.

CHANGE: MISSED APPROACH PROCEDURE.