

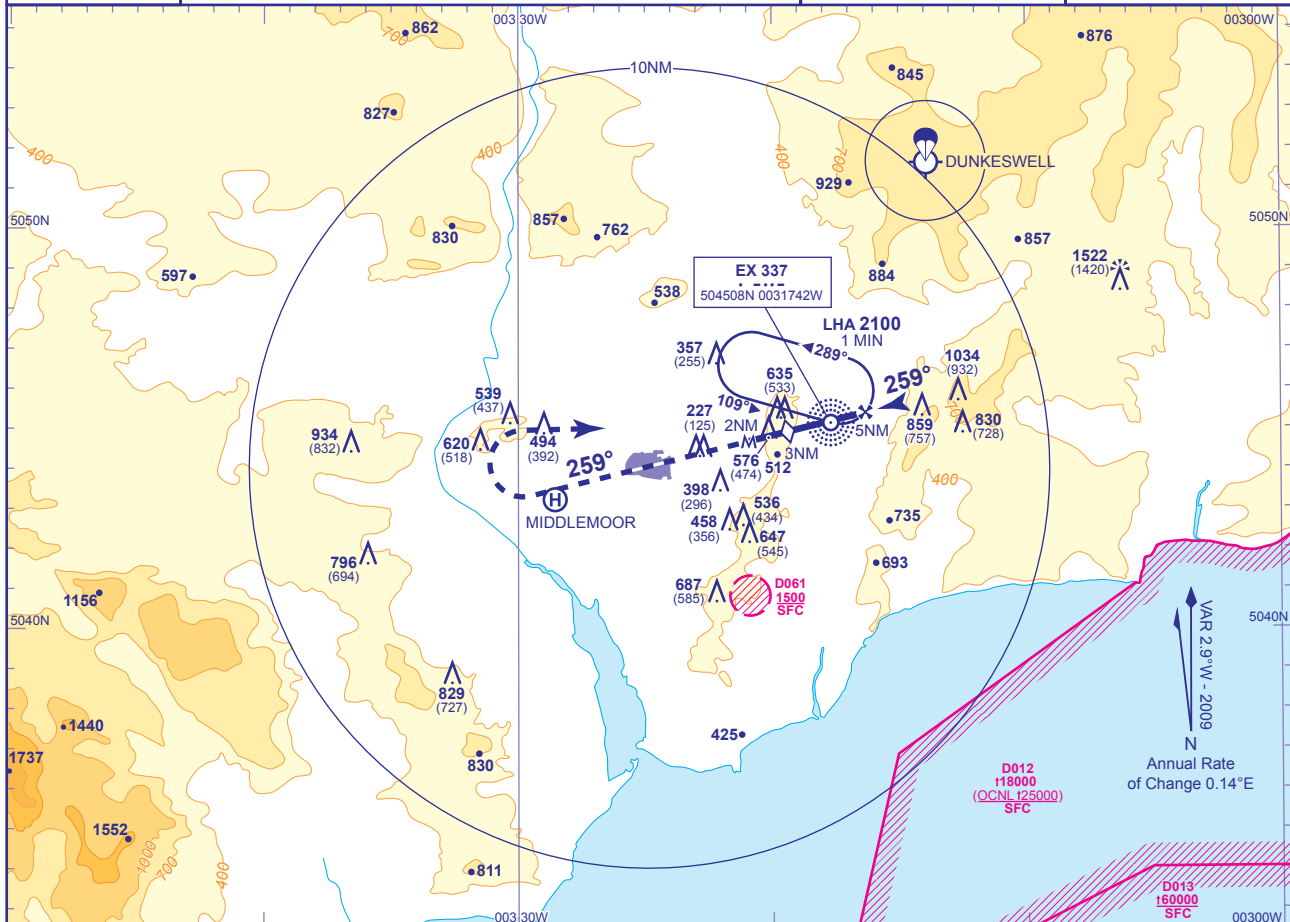
INSTRUMENT APPROACH CHART - ICAO

EXETER
SRA RTR 2NM
RWY 26
 (ACFT CAT A,B,C,D)



APP	128.975	EXETER APPROACH	AD ELEVATION	102
TWR	119.800	EXETER TOWER	THR ELEVATION	102
RAD	128.975, 119.050	EXETER RADAR	OBSTACLE ELEVATION	1522 AMSL (1420) (ABOVE THR)
ATIS	119.325	EXETER INFORMATION	BEARINGS ARE MAGNETIC	

TRANSITION ALTITUDE
3000

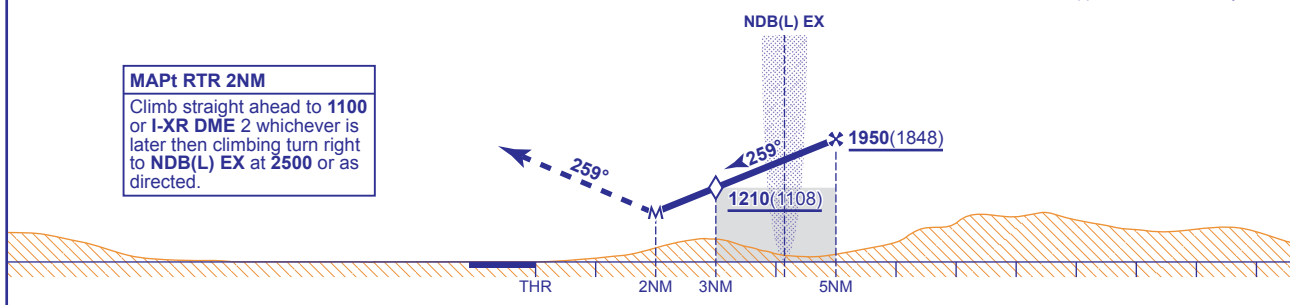


RADAR ADVISORY HEIGHTS Gradient 6.1%, 370FT/NM

NM	5.0	4.0	3.0 (SDF)
ALT(HGT)	1950(1848)	1580(1478)	1210(1108)

Initial and intermediate approach as directed by radar.

MAPt RTR 2NM
 Climb straight ahead to 1100 or I-XR DME 2 whichever is later then climbing turn right to NDB(L) EX at 2500 or as directed.



Aircraft Category	A	B	C	D	Rate of descent	G/S KT	160	140	120	100	80
OCA (OCH) Procedure	890(788)	890(788)	890(788)	890(788)	FT/MIN	990	860	740	620	490	
VM(C)OCA (OCH AAL) Total Area	890(788)	890(788)	1090(988)	1090(988)							

NOTE ATC will normally require aircraft to hold not lower than 3500.

CHANGE: PROCEDURE TRACKS. MAG VAR. MOC BOX. OBSTACLES.