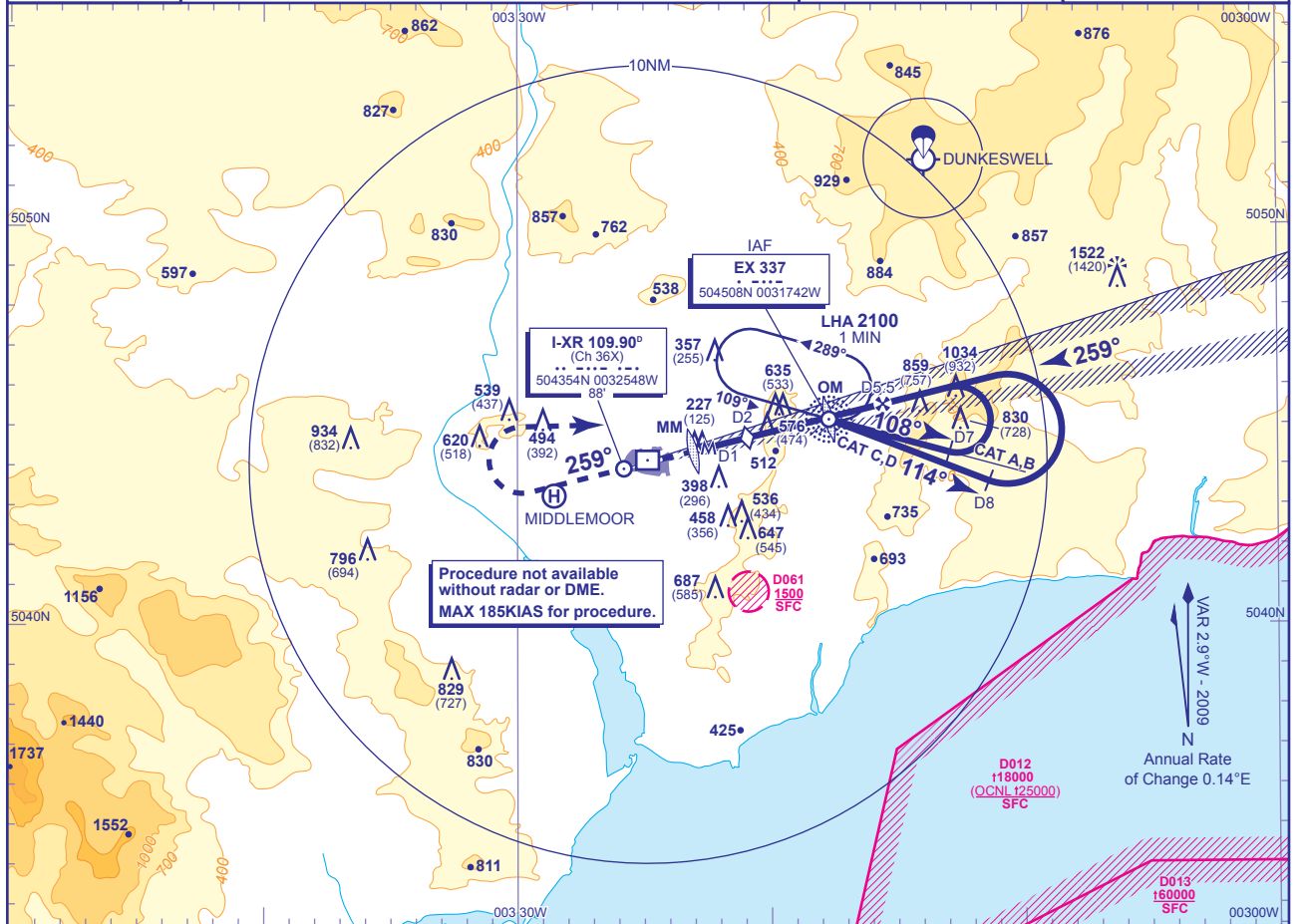


INSTRUMENT APPROACH CHART - ICAO

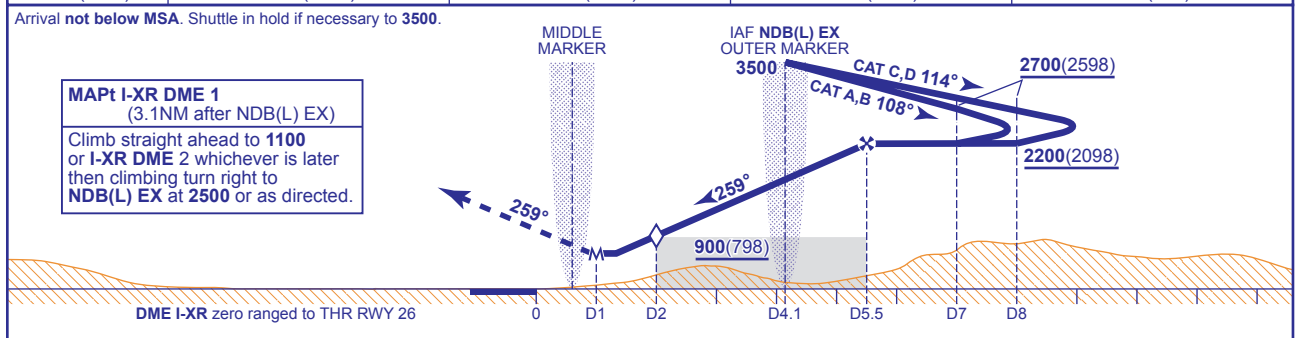
**EXETER
LOC/DME/NDB(L)
RWY 26
(ACFT CAT A,B,C,D)**

	APP 128.975	EXETER APPROACH	AD ELEVATION 102
	TWR 119.800	EXETER TOWER	THR ELEVATION 102
	RAD 128.975, 119.050	EXETER RADAR	OBSTACLE ELEVATION 1522 AMSL (1420) (ABOVE THR)
	ATIS 119.325	EXETER INFORMATION	BEARINGS ARE MAGNETIC
			TRANSITION ALTITUDE 3000



RECOMMENDED PROFILE Gradient 6.1%, 370FT/NM

DME I-XR	5	4.1 (EX NDB(L))	3	2 (SDF)
ALT(HGT)	2020(1918)	1680(1578)	1280(1178)	900(798)



Aircraft Category		A	B	C	D	Rate of descent NDB(L) to MAPT (3.1NM)	G/S KT	160	140	120	100	80
OCA (OCH)	Procedure	630(528)	630(528)	630(528)	630(528)		FT/MIN	990	870	740	620	500
VM(C)OCA (OCH AAL)	Total Area	700(598)	880(778)	1090(988)	1090(988)	MIN:SEC	1:09	1:19	1:33	1:51	2:19	

AIRCRAFT UNABLE TO RECEIVE DME I-XR RADAR FIX AVAILABLE
Notify ATC. Fly outbound on base turn for 1.5 MIN (CAT A,B) or 1 MIN (CAT C,D) prior to commencing left turn to intercept LOC. A radar fix will be provided at 5.5NM and 2NM.

- NOTE 1** Lowest altitude to commence procedure from hold after a missed approach is **2500**.
NOTE 2 ATC will normally require aircraft to hold not lower than **3500**.
NOTE 3 LOC range is restricted to 18NM within 10° and 10NM within 35° of C/L.

CHANGE: PROCEDURE TRACKS. MAG VAR. MOC BOX. OBSTACLES.