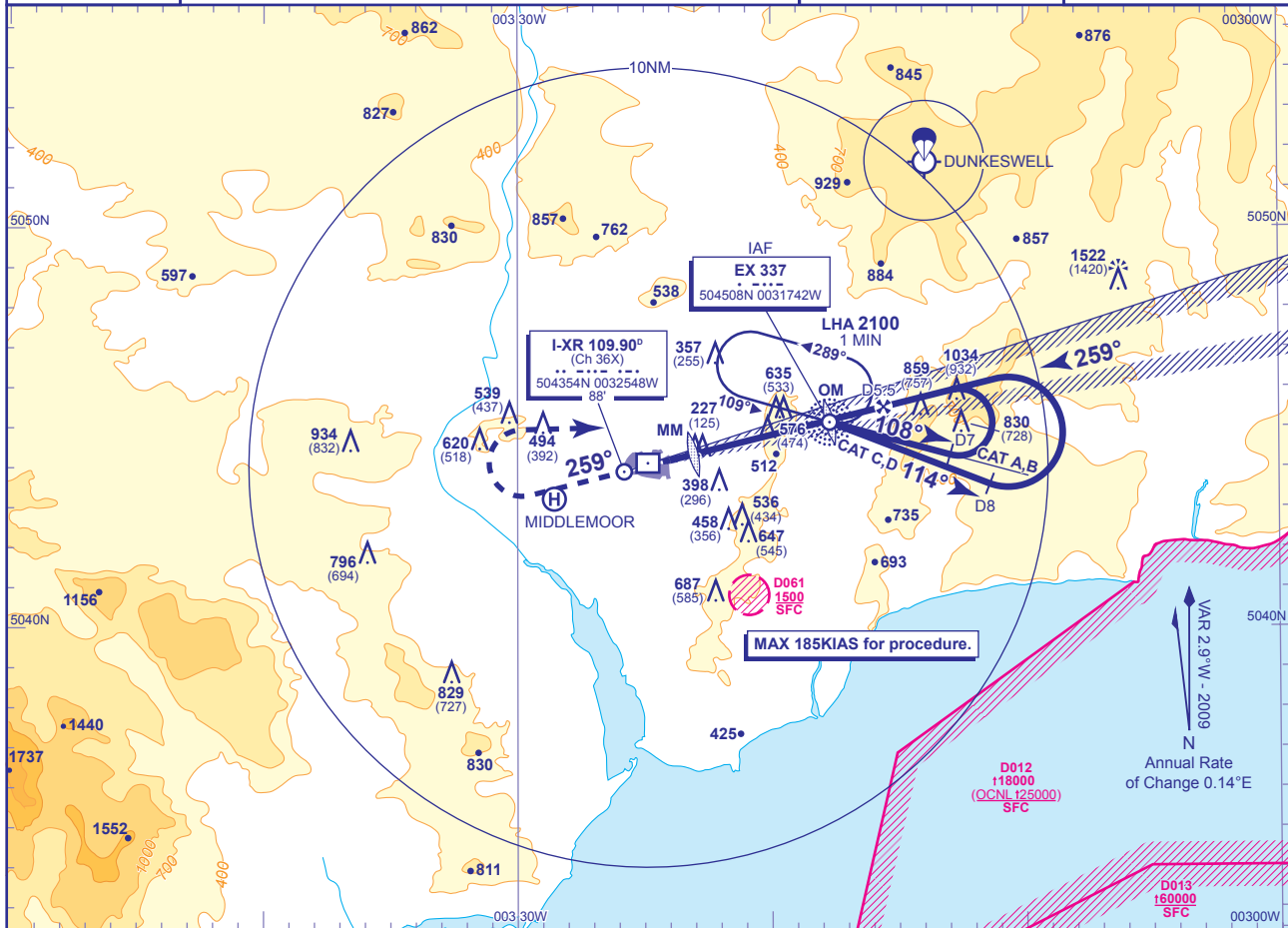


INSTRUMENT APPROACH CHART - ICAO

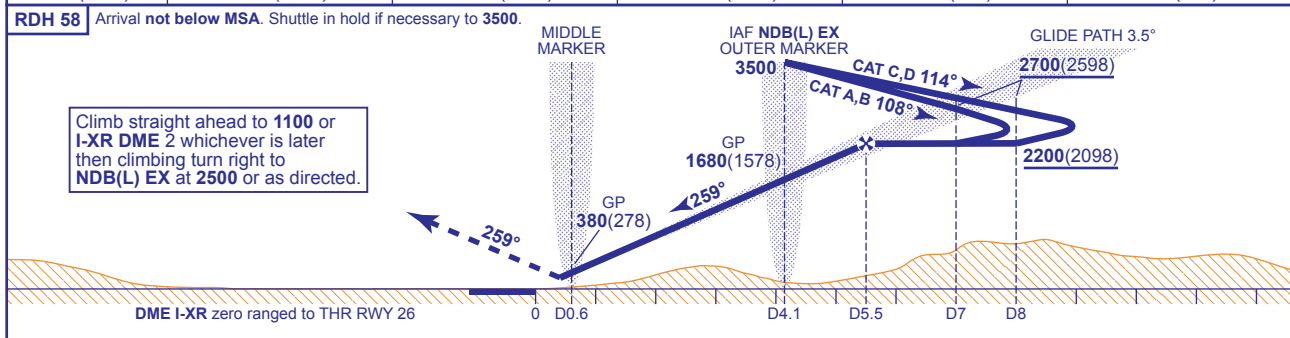
**EXETER**  
**ILS/DME/NDB(L)**  
**RWY 26**  
 (ACFT CAT A,B,C,D)

	APP 128.975	EXETER APPROACH	AD ELEVATION 102
	TWR 119.800	EXETER TOWER	THR ELEVATION 102
	RAD 128.975, 119.050	EXETER RADAR	OBSTACLE ELEVATION 1522 AMSL (1420) (ABOVE THR)
	ATIS 119.325	EXETER INFORMATION	BEARINGS ARE MAGNETIC
			TRANSITION ALTITUDE 3000



RECOMMENDED PROFILE GLIDE PATH 3.5°, 370FT/NM

DME I-XR	5	4	3	2	1
ALT(HGT)	2020(1918)	1650(1548)	1280(1178)	900(798)	530(428)



Climb straight ahead to 1100 or I-XR DME 2 whichever is later then climbing turn right to NDB(L) EX at 2500 or as directed.

Aircraft Category	A	B	C	D	Rate of descent	G/S KT	160	140	120	100	80
OCA (OCH)	CAT I	259(157)*	266(164)*	274(172)*	283(181)*	FT/MIN	990	870	740	620	500
VM(C)OCA (OCH AAL)	Total Area	700(598)	880(778)	1090(988)	1090(988)						

**AIRCRAFT UNABLE TO RECEIVE DME I-XR**  
 Fly outbound for 1.5 MIN (CAT A,B) or 1 MIN (CAT C,D) prior to commencing base turn.

- NOTE 1** Lowest altitude to commence procedure from hold after a missed approach is 2500.  
**2** ATC will normally require aircraft to hold not lower than 3500.  
**3** \*Quality of the guidance does not permit use of the glide path below 300(198).  
**4** Glide path is not to be used beyond 8NM from the THR.  
**5** LOC range is restricted to 18NM within 10° and 10NM within 35° of C/L.

**CHANGE:** PROCEDURE TRACKS. MAG VAR. OBSTACLES.