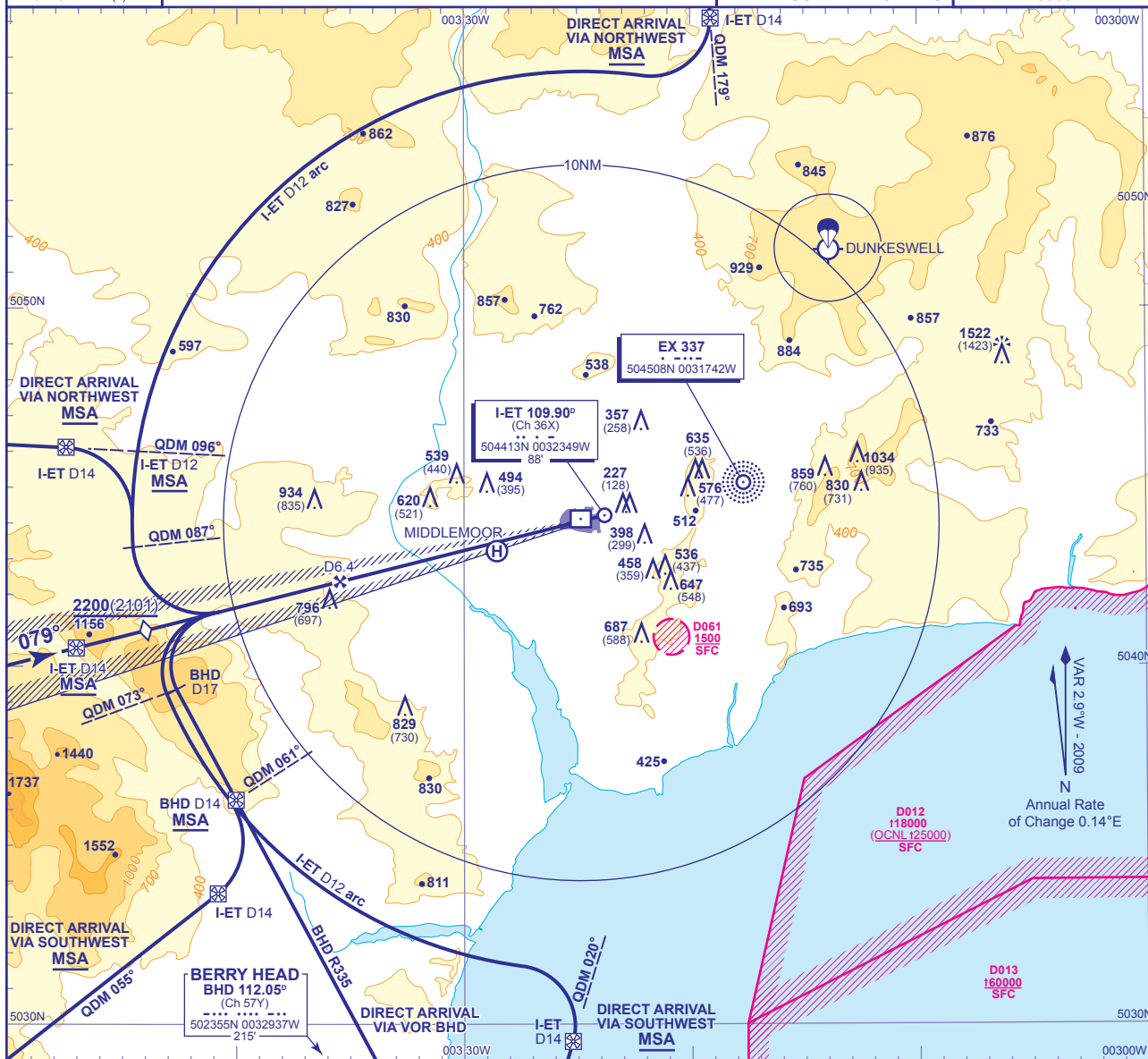


INSTRUMENT APPROACH CHART - ICAO

**EXETER**  
**Direct Arrivals**  
**RWY 08**  
 (ACFT CAT A,B,C,D)

	APP 128.975	EXETER APPROACH	AD ELEVATION 102
	TWR 119.800	EXETER TOWER	THR ELEVATION 99
	RAD 128.975, 119.050	EXETER RADAR	OBSTACLE ELEVATION 1522 AMSL (1423) (ABOVE THR)
	ATIS 119.325	EXETER INFORMATION	BEARINGS ARE MAGNETIC
			TRANSITION ALTITUDE 3000



**DIRECT ARRIVALS FROM BHD VOR/DME**  
 Subject to prior approval from ATC. When clear of Controlled Airspace, from overhead BHD VOR/DME (IAF) **not below MSA**, fly outbound on BHD R335. At BHD DME 14 (NDB(L) EX QDM 061°) descend to **not below 2200(2101)**. At lead QDM NDB(L) EX 073° (BHD DME 17) commence right turn to establish on LOC/FAT. When established continue as for basic procedure.

**DIRECT ARRIVALS FROM WEST**  
 Subject to prior approval from ATC. Establish on the extended FAT/LOC **not below MSA**. At IAF QDM NDB(L) EX 079° or LOC I-ET DME 14 commence descent to **not below 2200(2101)** and continue as for basic procedure.

**DIRECT ARRIVALS FROM SOUTHWEST VIA I-ET DME 12 ARC**  
 Subject to prior approval from ATC. Track towards NDB(L) EX between NDB(L) EX QDM 020° and 055° **not below MSA**. At I-ET DME 14 turn left to establish and follow the I-ET DME 12 arc clockwise. After passing QDM NDB(L) EX 061° descend to **not below 2200(2101)**. At lead QDM NDB(L) EX 073° (BHD DME 17) commence right turn to establish on LOC/FAT. When established continue as for basic procedure.

**DIRECT ARRIVALS FROM NORTHWEST VIA I-ET DME 12 ARC**  
 Subject to prior approval from ATC. Track towards NDB(L) EX between NDB(L) EX QDM 179° and 096° **not below MSA**. At IAF (I-ET DME 14) turn right to establish and follow the I-ET DME 12 arc anticlockwise. After passing QDM NDB(L) EX 096° descend to **not below 2200(2101)**. At lead QDM NDB(L) EX 087° commence left turn to establish on LOC/FAT. When established continue as for basic procedure.

CHANGE: FAT. MAG VAR. NORTHWEST DIRECT ARRIVALS. OBSTACLES.

AERO INFO DATE 21 JUL 09