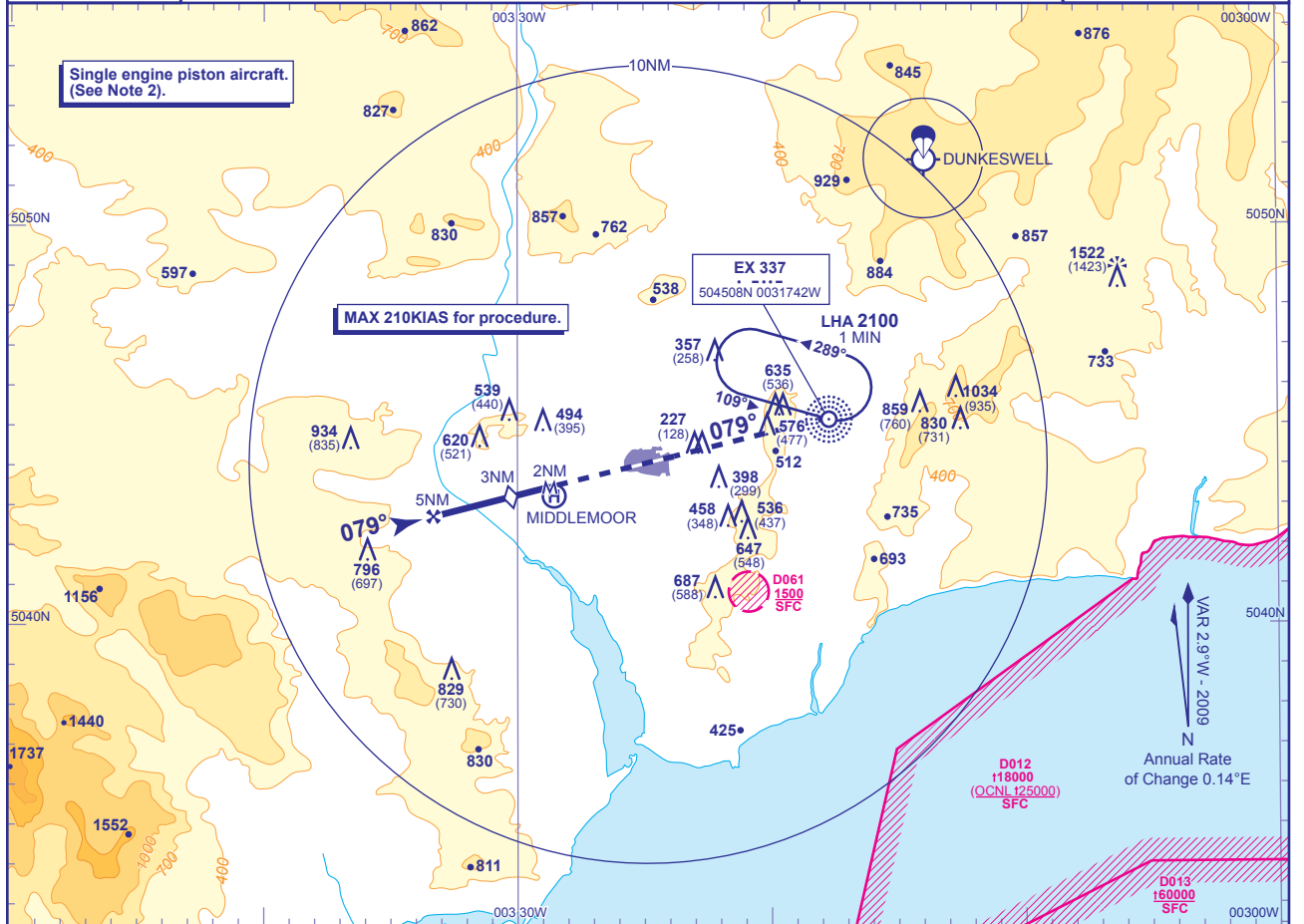


INSTRUMENT APPROACH CHART - ICAO

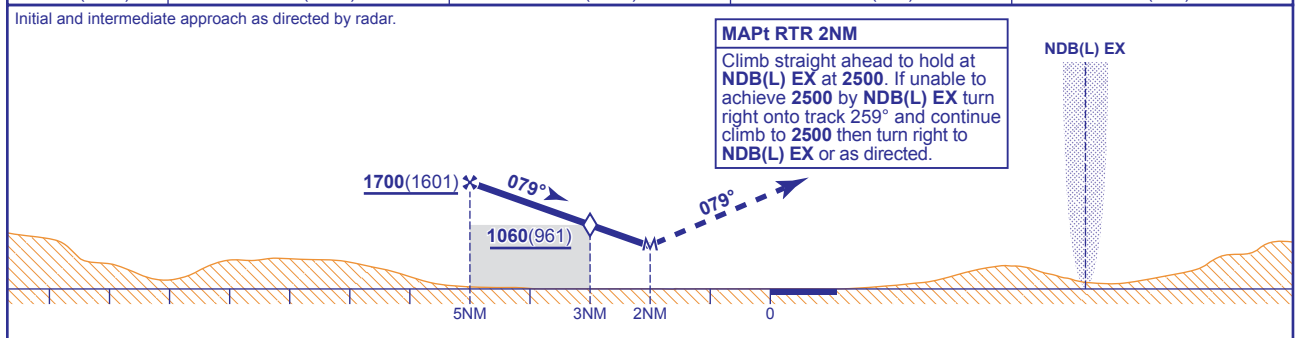
EXETER
SRA RTR 2NM
RWY 08
 (ACFT CAT A,B,C,D)

	APP 128.975	EXETER APPROACH	AD ELEVATION 102
	TWR 119.800	EXETER TOWER	THR ELEVATION 99
	RAD 128.975, 119.050	EXETER RADAR	OBSTACLE ELEVATION 1522 AMSL (1423) (ABOVE THR)
	ATIS 119.325	EXETER INFORMATION	BEARINGS ARE MAGNETIC
			TRANSITION ALTITUDE 3000



RADAR ADVISORY HEIGHTS Gradient 5.28%, 321FT/NM

NM	5.0	4.0	3.0 (SDF)	2.0
ALT(HGT)	1700(1601)	1380(1281)	1060(961)	740(641)



Aircraft Category	A	B	C	D	Rate of descent	G/S KT	160	140	120	100	80
OCA (OCH) Procedure	660(561)	660(561)	660(561)	660(561)		FT/MIN	860	750	640	530	430
VM(C)OCA (OCH AAL) Total Area	700(598)	880(778)	1090(988)	1090(988)							

NOTE 1 ATC will normally require aircraft to hold not lower than 3500.
NOTE 2 Single engine piston aircraft **must not descend below VM(C) OCA(OCH) 700(598)**. Procedure is only available as an approach visual manoeuvring to the unmarked displaced threshold for single engine piston aircraft (EGTE AD 2.20 para 6).

CHANGE: PROCEDURE TRACKS. MAG VAR. MOC BOX. OBSTACLES. MAPT CORRECTION.