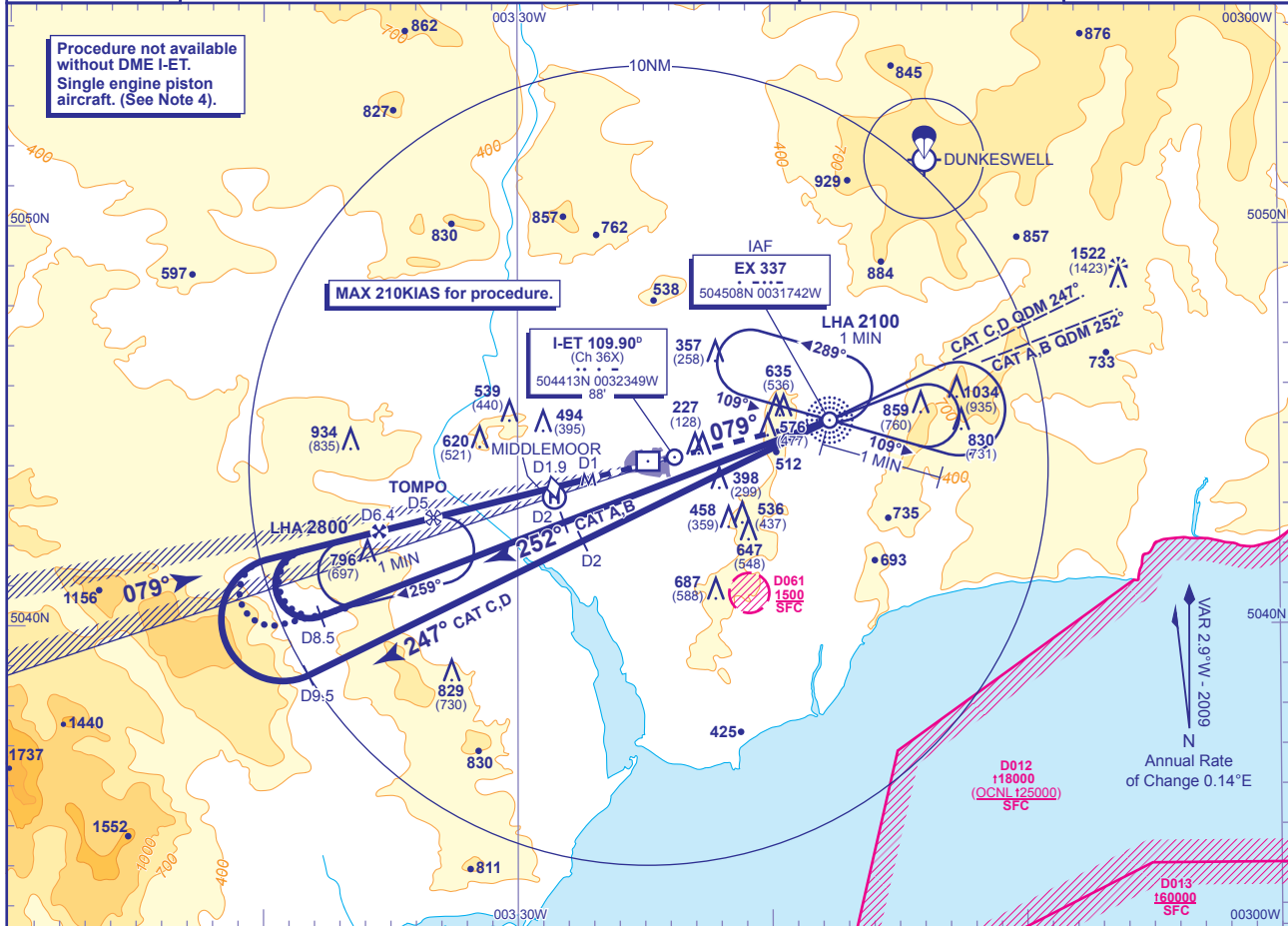


INSTRUMENT APPROACH CHART - ICAO

EXETER
LOC/DME/NDB(L)
RWY 08
 (ACFT CAT A,B,C,D)

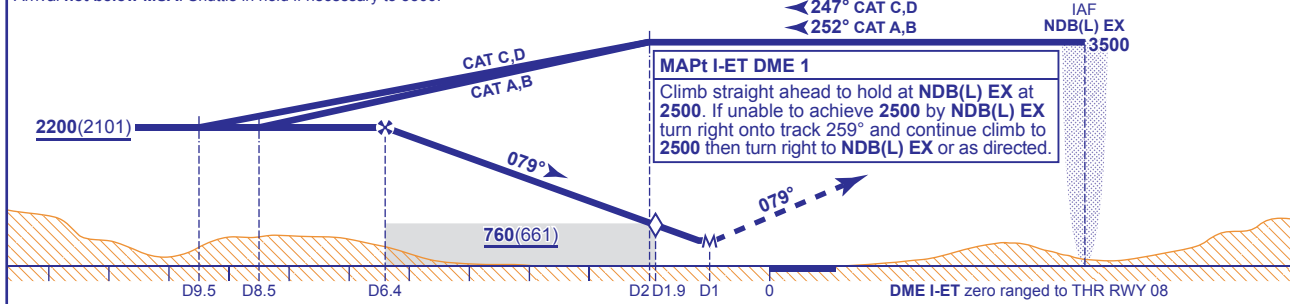
<p>MSA 25NM NDB(L) EX</p>	APP 128.975	EXETER APPROACH	AD ELEVATION 102
	TWR 119.800	EXETER TOWER	THR ELEVATION 99
	RAD 128.975, 119.050	EXETER RADAR	OBSTACLE ELEVATION 1522 AMSL (1423) (ABOVE THR)
	ATIS 119.325	EXETER INFORMATION	BEARINGS ARE MAGNETIC
			TRANSITION ALTITUDE 3000



RECOMMENDED PROFILE Gradient 5.2%, 320FT/NM

DME I-ET	6	5	4	3	2	1.9 (SDF)
ALT(HGT)	2060(1961)	1740(1641)	1420(1321)	1100(1001)	790(691)	760(661)

Arrival not below MSA. Shuttle in hold if necessary to 3500.



Aircraft Category	A	B	C	D	Rate of descent	G/S KT	160	140	120	100	80
OCA (OCH) Procedure	490(391)	490(391)	490(391)	490(391)	FT/MIN	850	740	640	530	420	
VM(C)OCA (OCH AAL) Total Area	700(598)	880(778)	1090(988)	1090(988)							

ALTERNATIVE PROCEDURE (FROM TOMPO HOLD)
 Shuttle as required in the TOMPO hold to 3000. Extend the outbound leg of the hold descending to **not below 2200(2101)**. At I-ET DME 8.5 (CAT A,B) or I-ET DME 9.5 (CAT C,D) commence right turn to establish on the localiser then continue as for basic procedure.

- NOTE 1** Lowest altitude to commence procedure from hold after a missed approach is 2500.
2 ATC will normally require aircraft to hold not lower than 3500 at NDB(L) EX or 3500 at TOMPO.
3 TOMPO hold not available without DME I-ET.
4 Single engine piston aircraft **must not descend below VM(C) OCA(OCH) 700(598)**. Procedure is only available as an approach visual manoeuvring to the unmarked displaced threshold for single engine piston aircraft (EGTE AD 2.20 para 6).

CHANGE: BASETURN.

AERO INFO DATE 20 OCT 09