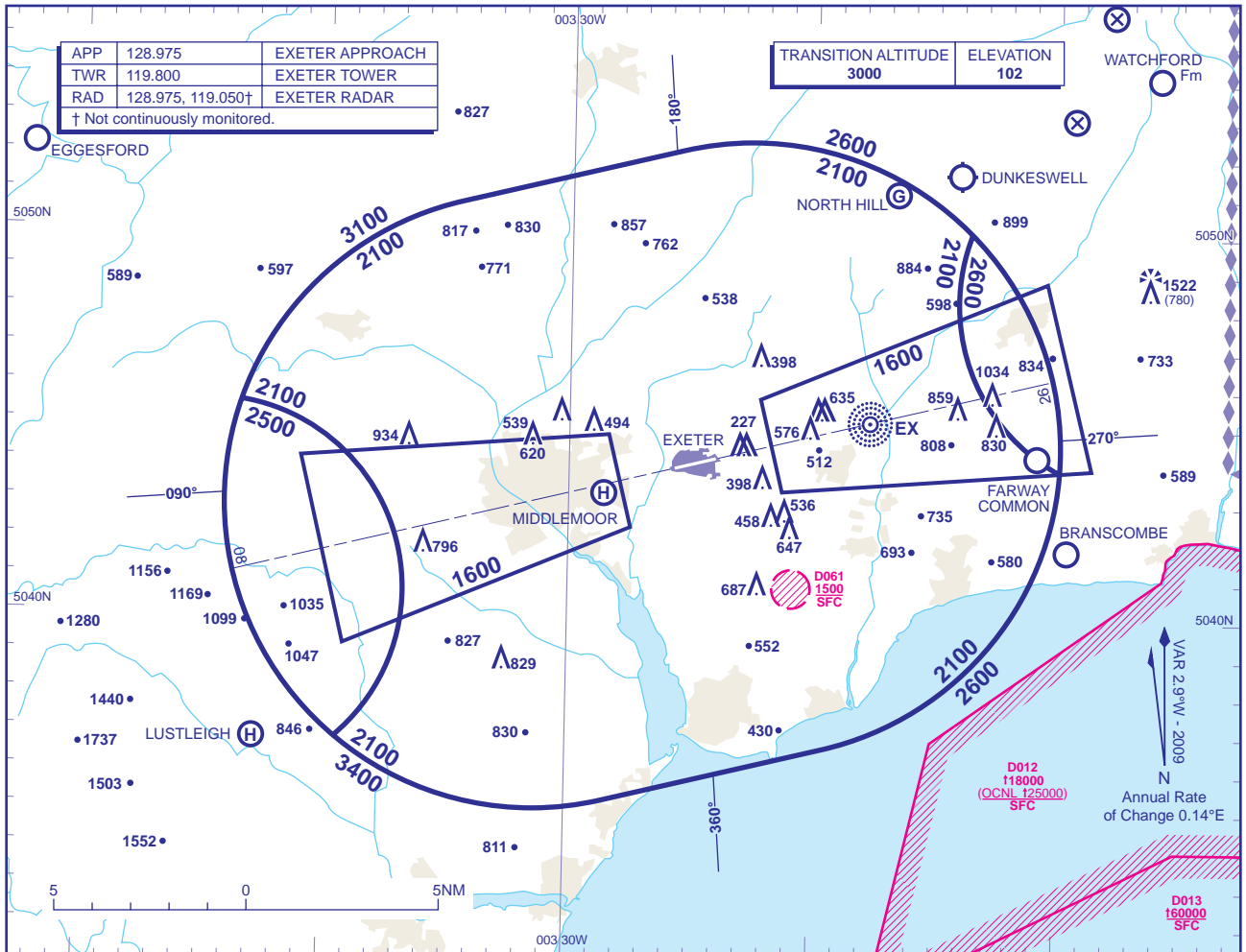


**ATC SURVEILLANCE MINIMUM ALTITUDE CHART - ICAO**

BEARINGS, TRACKS AND RADIALS ARE MAGNETIC  
ELEVATIONS IN FEET AMSL 1522  
HEIGHTS IN FEET AGL (780)

**EXETER**



**MINIMUM INITIAL ALTITUDE**

Within the ATC Surveillance Minimum Altitude area the minimum initial altitude to be allocated by the approach surveillance controller is:

- 2100** in the sector defined by the lateral limits; 505046N 0033433W - 505211N 0032531W thence clockwise by an arc of a circle radius 8NM centred on 504425N 0032229W to 505006N 0031336W thence anti-clockwise by an arc of a circle radius 5NM centred on 504820N 0030613W to 504355N 0030955W thence clockwise by an arc of a circle radius 8NM centred on 504425N 0032229W to 503640N 0031929W - 503515N 0032829W thence clockwise by an arc of a circle radius 8NM centred on 504300N 0033130W to 503648N 0033927W thence anti-clockwise by an arc of a circle radius 5NM centred on 504034N 0034437W to 504531N 0034328W thence clockwise by an arc of a circle radius 8NM centred on 504300N 0033130W to 505046N 0033433W.
- 2500** in the sector defined by the lateral limits; 504531N 0034328W thence clockwise by an arc of a circle radius 5NM centred on 504034N 0034437W to 503648N 0033927W thence clockwise by an arc of a circle radius 8NM centred on 504300N 0033130W to 504531N 0034328W.
- 2600** in the sector defined by the lateral limits; 505006N 0031336W thence clockwise by an arc of a circle radius 8NM centred on 504425N 0032229W to 504355N 0030955W thence clockwise by an arc of a circle radius 5NM centred on 504820N 0030613W to 505006N 0031336W.

Further descent to **1600** may be given within the Approach Areas shown when on 40° leg or Final Approach.

**OUTSIDE THE DESIGNATED ATC SURVEILLANCE MINIMUM ALTITUDE AREA**

The minimum altitude to be allocated by the approach surveillance controller will be either the Minimum Sector Altitude, or **1000** above any fixed obstacles

- within 5NM of the aircraft\*, or
- within the sector 15NM ahead of and within 20° either side of the aircraft's track\*.

\*When the aircraft is within 15NM of the radar antennae, the 5NM in a) and the 15NM in b) may be reduced to 3NM and 10NM respectively.

**LOSS OF COMMUNICATION PROCEDURES**

**Initial Approach**  
Continue visually or by means of an appropriate approved final approach aid. If not possible proceed at **2500**, or last assigned level if higher to **NDB(L) EX†**.

**Intermediate and Final Approach**  
Continue visually or by means of an appropriate final approach aid. If not possible follow the Missed Approach Procedure to **NDB(L) EX†**.

† In all cases where the aircraft returns to the holding facility the procedure to be adopted is the Basic Radio Failure Procedure detailed at ENR 1.1.3.

**GENERAL INFORMATION**

- Levels shown are based on QNH.
- Only significant obstacles and dominant spot heights are shown.
- The minimum levels shown within the ATC Surveillance Minimum Altitude area ensure terrain clearance in conformity with Rule 33 of the Rules of the Air Regulations in respect of obstacles within the ATCSMA area.
- Minimum Sector Altitudes are based on obstacles and spot heights within 25NM of the Aerodrome Reference Point.
- Controlled airspace with a base in excess of **5000** or FL55, as appropriate, is not shown.
- This chart should only be used for the cross-checking of assigned altitudes whilst in receipt of an ATC Surveillance service.**

CHANGE: TITLE. NOTE 3. MAG VAR.

AERO INFO DATE 30 OCT 08

**INTENTIONALLY BLANK**