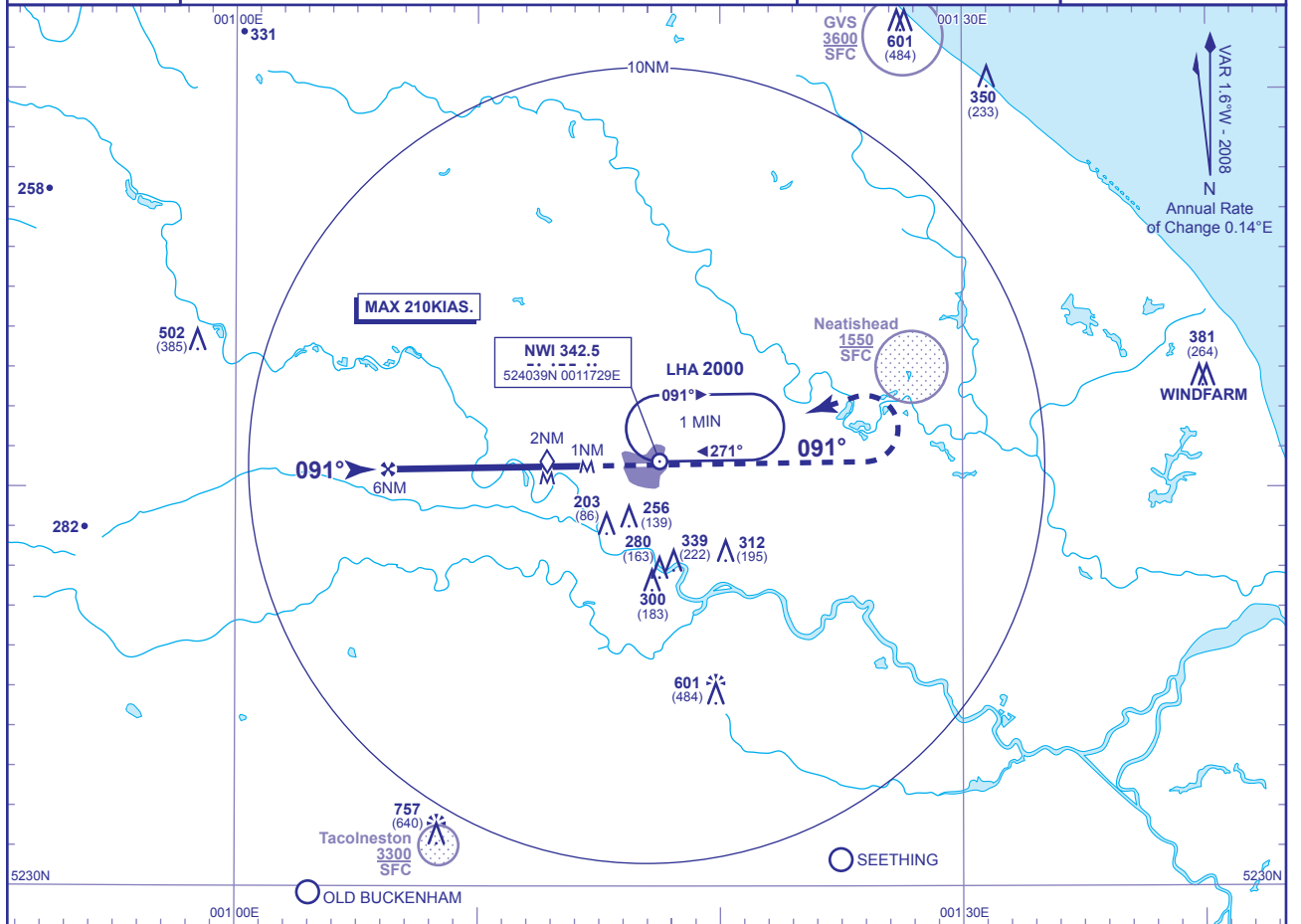


INSTRUMENT APPROACH CHART - ICAO

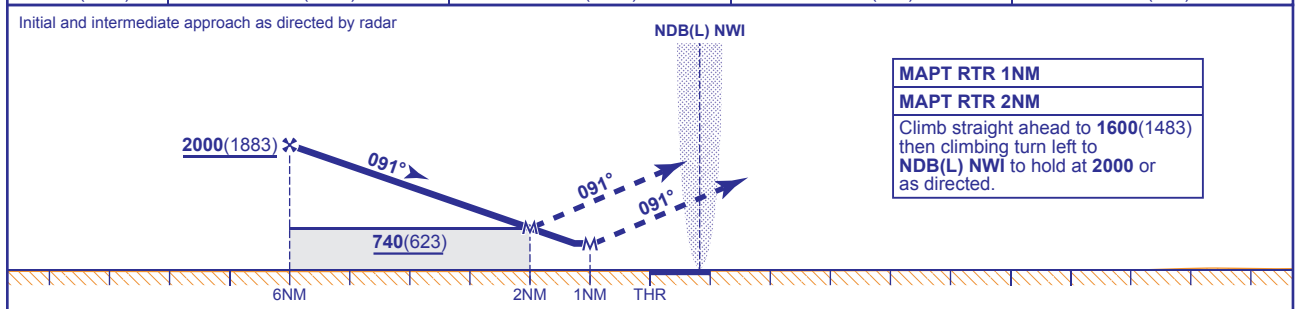
NORWICH SRA RTR
1NM/2NM
RWY 09
 (ACFT CAT A,B,C,D)

| | | | |
|----------------------------|-----------------------|-----------------------|--|
| <p>MSA 25NM NDB(L) NWI</p> | APP 119.350 | NORWICH APPROACH | AD ELEVATION 117 |
| | TWR 124.250 | NORWICH TOWER | THR ELEVATION 117 |
| | RAD 119.350, 128.325* | NORWICH RADAR | OBSTACLE ELEVATIONS 757 AMSL (640) (ABOVE THR) |
| | ATIS 128.625 | NORWICH INFORMATION | |
| * NORWICH DIRECTOR | | BEARINGS ARE MAGNETIC | |
| | | | TRANSITION ALTITUDE 3000 |



RECOMMENDED PROFILE Gradient 5.2%, 320FT/NM

| | | | | |
|----------|------------|------------|-----------|----------|
| NM | 5 | 4 | 3 | 2 |
| ALT(HGT) | 1690(1573) | 1370(1253) | 1060(943) | 740(623) |



| Aircraft Category | A | B | C | D | Rate of descent | G/S KT | 160 | 140 | 120 | 100 | 80 |
|--------------------|---------------------|----------|----------|----------|-----------------|--------|--------|-----|-----|-----|-----|
| OCA (OCH) | RTR 1NM 510(393) | 510(393) | 510(393) | 510(393) | | | FT/MIN | 840 | 730 | 630 | 520 |
| VM(C)OCA (OCH AAL) | Total Area 610(493) | 610(493) | 740(623) | 810(693) | | | | | | | |

NOTE 1 All inbound aircraft should contact Norwich at least 10 MIN before ETA.
NOTE 2 ATC will normally require aircraft to hold not lower than 3000 or equivalent FL.

CHANGE: PROCEDURE. MAG VAR.