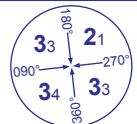
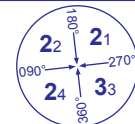
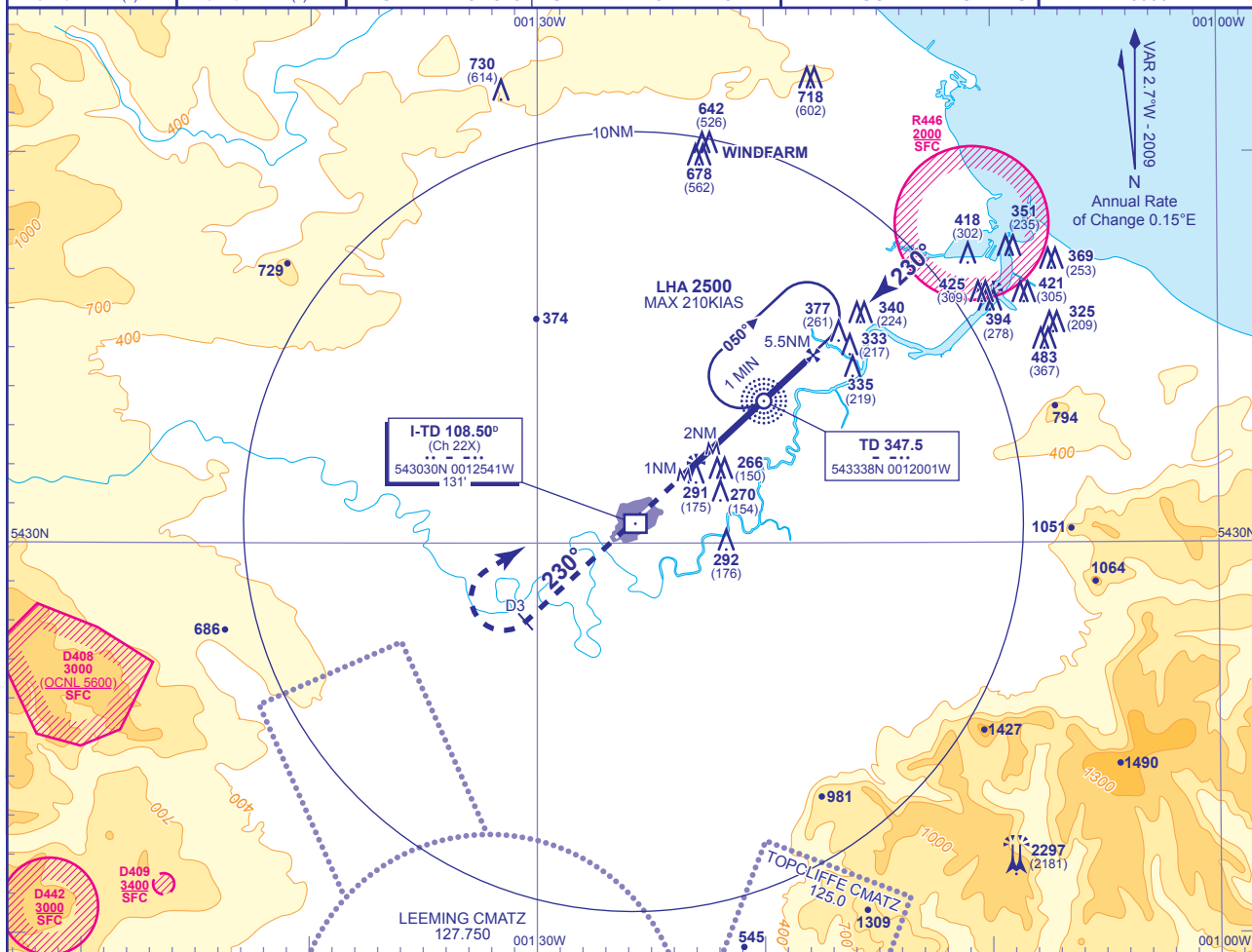


INSTRUMENT APPROACH CHART - ICAO

DURHAM TEES VALLEY

 <p>MSA 25NM NDB(L) TD</p>	 <p>MSA 10NM NDB(L) TD</p>	APP 118.850	DURHAM APPROACH	AD ELEVATION	120	
		TWR 119.800	DURHAM TOWER	THR ELEVATION	116	
		RAD 118.850	DURHAM RADAR	OBSTACLE ELEVATION	2297 AMSL (2181) (ABOVE THR)	
		RAD/SRAS 128.850	DURHAM DIRECTOR			
		ATIS 132.375	DURHAM INFORMATION	BEARINGS ARE MAGNETIC		
					TRANSITION ALTITUDE	6000

SRA
RTR 1NM/2NM
RWY 23
 (ACFT CAT A,B,C,D)

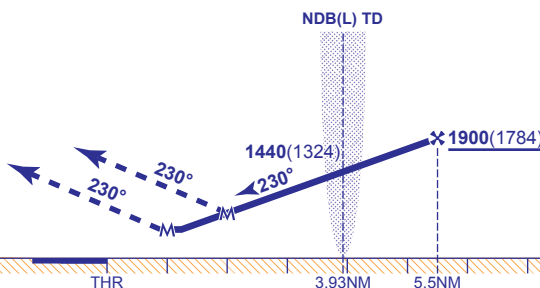


RECOMMENDED PROFILE Gradient 5.34%, 325FT/NM

NM	5.0	4.0	3.5	3.0	2.5	2.0	1.5
ALT(HGT)	1740(1624)	1410(1294)	1250(1134)	1090(974)	930(814)	760(644)	600(484)

Initial and intermediate approach as directed by radar.
 Arrival not below MSA.

MAPt RTR 1NM
MAPt RTR 2NM
 Climb straight ahead to 1000 or I-TD D3 outbound whichever is later then turn right to return to NDB(L) TD to enter hold not below 2500 or as directed.



Aircraft Category		A	B	C	D	Rate of descent	G/S KT	160	140	120	100	80
OCA (OCH)	RTR 1NM	540(424)	540(424)	540(424)	540(424)		FT/MIN	840	740	630	530	420
VM(C)OCA (OCH AAL) Total Area	RTR 1NM	590(470)	620(500)	800(680)	810(690)							
	RTR 2NM	760(640)	760(640)	800(680)	810(690)							

CHANGE: MAG VAR. D408.

AERO INFO DATE 26 NOV 09