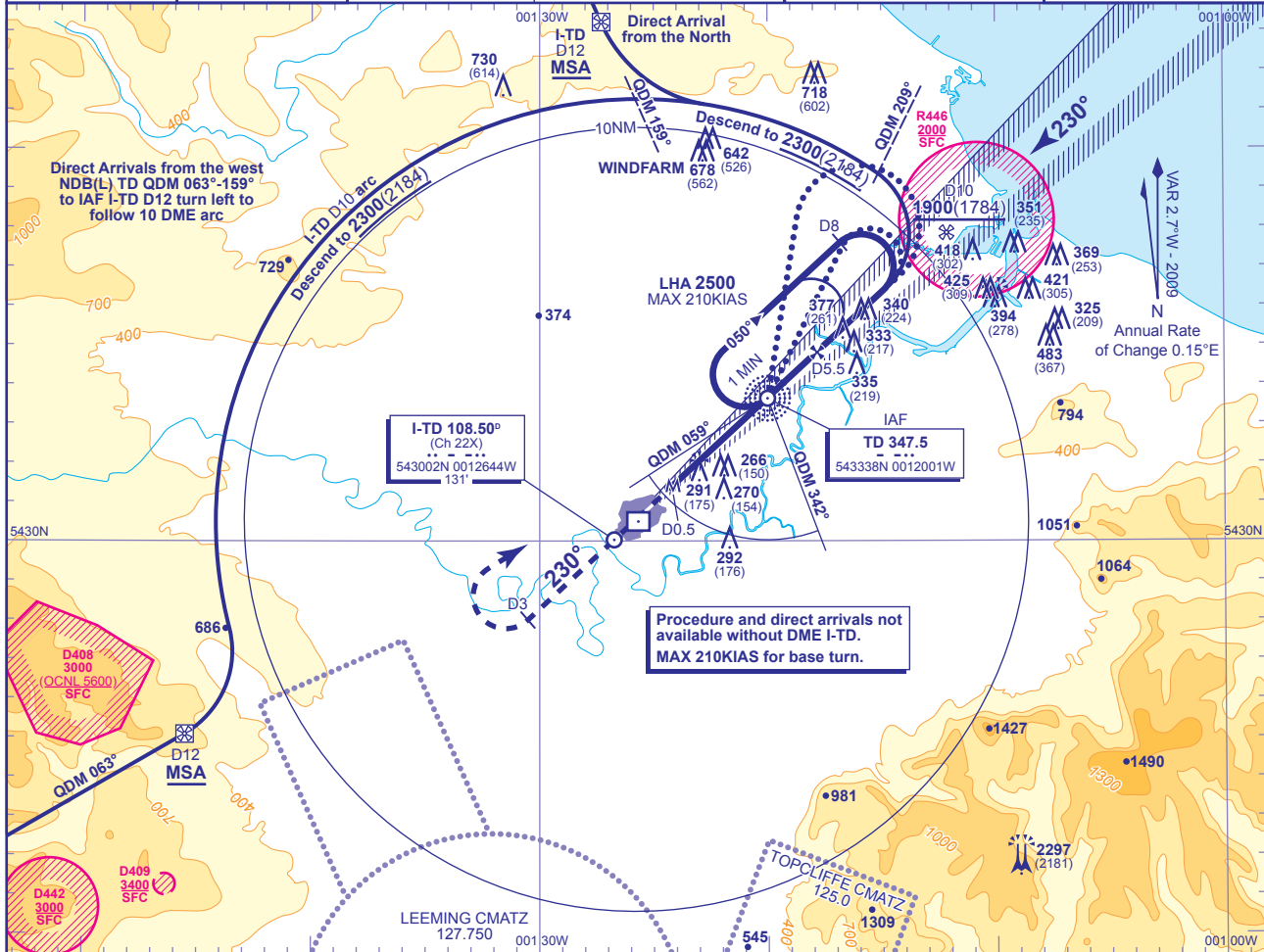


INSTRUMENT APPROACH CHART - ICAO

DURHAM TEES VALLEY  
LOC/DME/NDB(L)  
RWY 23  
(ACFT CAT A,B,C,D)

<p>MSA 25NM NDB(L) TD</p>	<p>MSA 10NM NDB(L) TD</p>	APP 118.850	DURHAM APPROACH	AD ELEVATION 120
		TWR 119.800	DURHAM TOWER	THR ELEVATION 116
		RAD 118.850	DURHAM RADAR	OBSTACLE ELEVATION 2297 AMSL (2181) (ABOVE THR)
		RAD/SRAS 128.850	DURHAM DIRECTOR	
		ATIS 132.375	DURHAM INFORMATION	BEARINGS ARE MAGNETIC

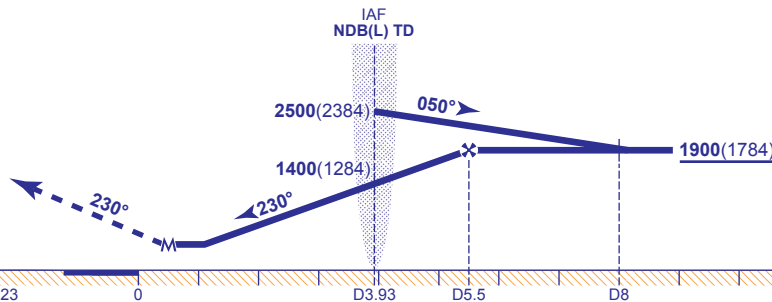


RECOMMENDED PROFILE Gradient 5.2%, 315FT/NM

DME I-TD	5	4	3	2
ALT(HGT)	1740(1624)	1430(1314)	1110(994)	800(684)

Arrival not below MSA.

**MAPt I-TD DME 0.5**  
Climb straight ahead to 1000 or I-TD D3 outbound whichever is later then turn right to return to NDB(L) TD to enter hold not below 2500 or as directed.



Aircraft Category		A	B	C	D	Rate of descent	G/S KT	160	140	120	100	80
OCA (OCH)	Procedure	500(384)	500(384)	500(384)	500(384)		FT/MIN	840	740	630	530	420
VM(C)OCA (OCH AAL)	Total Area	590(470)	620(500)	800(680)	810(690)							

ALTERNATIVE PROCEDURE

Arrival overhead NDB(L) TD not below MSA, only from within sector entry between NDB(L) TD QDM 342° and NDB(L) TD QDM 059° fly outbound on NDB(L) TD QDR 029° CAT A,B and NDB(L) TD QDR 012° CAT C,D descending not below 1900(1784). At I-TD DME 8 baseturn right to intercept the LOC, continue as for main procedure.

**NOTE 1** No sector 1 entries to racetrack authorised.  
**NOTE 2** Direct/arc arrivals only available with ATC clearance.

CHANGE: MAG VAR. D408.

AERO INFO DATE 26 NOV 09