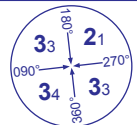
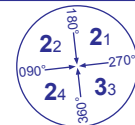


INSTRUMENT APPROACH CHART - ICAO

DURHAM TEES VALLEY

SRA RTR
1NM/2NM
RWY 05

(ACFT CAT A,B,C,D)

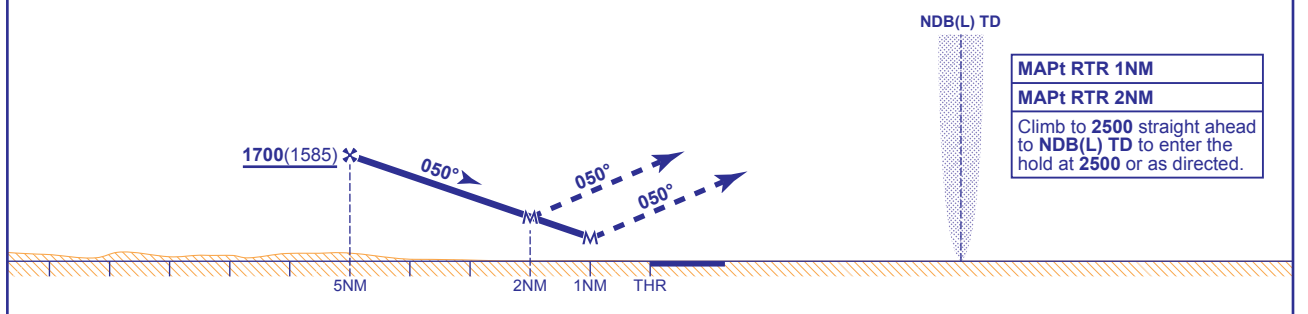
 MSA 25NM NDB(L) TD	 MSA 10NM NDB(L) TD	APP 118.850	DURHAM APPROACH	AD ELEVATION	120	
		TWR 119.800	DURHAM TOWER	THR ELEVATION	115	
		RAD 118.850	DURHAM RADAR	OBSTACLE ELEVATION	2297 AMSL (2182) (ABOVE THR)	
		RAD/SRAS 128.850	DURHAM DIRECTOR			
		ATIS 132.375	DURHAM INFORMATION	BEARINGS ARE MAGNETIC		
					TRANSITION ALTITUDE	6000



RECOMMENDED PROFILE Gradient 5.23%, 318FT/NM

NM	5.0	4.5	4.0	3.5	3.0	2.5	2.0	1.5	1.0
ALT(HGT)	1700(1585)	1540(1425)	1380(1265)	1220(1105)	1060(945)	910(795)	750(635)	590(475)	480(365)

Initial and intermediate approach as directed by radar.



Aircraft Category		A	B	C	D	Rate of descent	G/S KT	160	140	120	100	80
OCA (OCH)	RTR 1NM	480(365)	480(365)	480(365)	480(365)			FT/MIN	850	740	640	530
	RTR 2NM	750(635)	750(635)	750(635)	750(635)							
VM(C)OCA (OCH AAL) Total Area	RTR 1NM	590(470)	620(500)	800(680)	810(690)							
	RTR 2NM	750(630)	750(630)	800(680)	810(690)							

CHANGE: MAG VAR. D408.

AERO INFO DATE 26 NOV 09