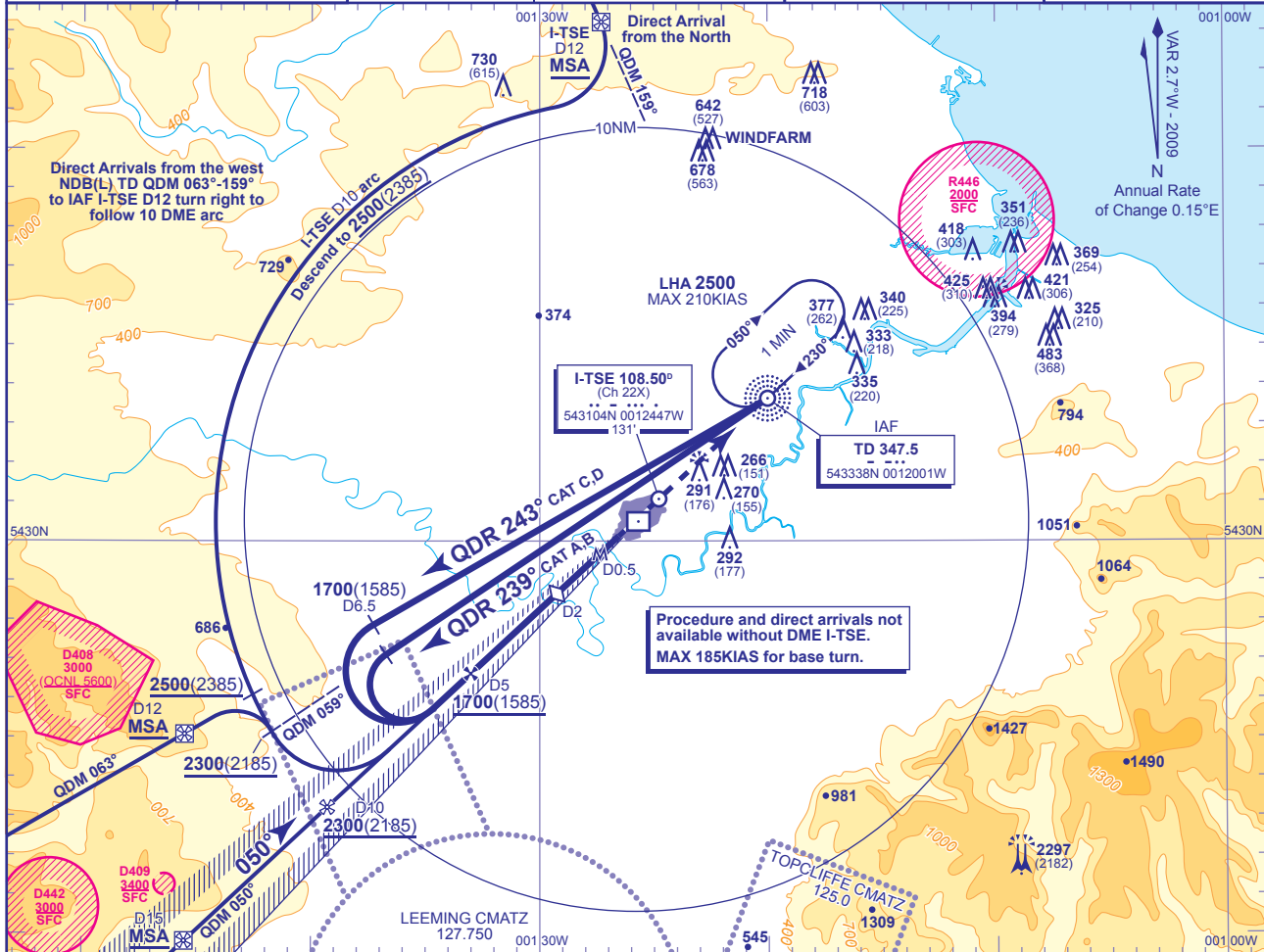


INSTRUMENT APPROACH CHART - ICAO

DURHAM TEES VALLEY
LOC/DME/NDB(L)
RWY 05
(ACFT CAT A,B,C,D)

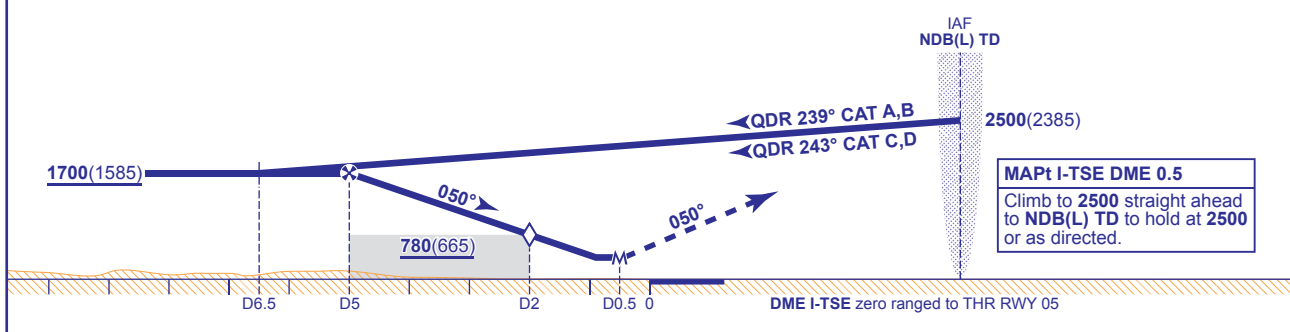
<p>MSA 25NM NDB(L) TD</p>	<p>MSA 10NM NDB(L) TD</p>	APP 118.850	DURHAM APPROACH	AD ELEVATION 120
		TWR 119.800	DURHAM TOWER	THR ELEVATION 115
		RAD 118.850	DURHAM RADAR	OBSTACLE ELEVATION 2297 AMSL (2182) (ABOVE THR)
		RAD/SRAS 128.850	DURHAM DIRECTOR	
		ATIS 132.375	DURHAM INFORMATION	BEARINGS ARE MAGNETIC



RECOMMENDED PROFILE Gradient 5.05%, 307FT/NM

DME I-TSE	5	4	3	2 (SDF)	1
ALT(HGT)	1700(1585)	1390(1275)	1090(975)	780(665)	470(355)

Arrival not below MSA.



Aircraft Category	A	B	C	D	Rate of descent	G/S KT	160	140	120	100	80
OCA (OCH) Procedure	440(325)	440(325)	440(325)	440(325)		FT/MIN	820	720	610	510	410
VM(C)OCA (OCH AAL) Total Area	590(470)	620(500)	800(680)	810(690)							

NOTE 1 NDB(L) TD and DME I-TSE not co-located beware of potentially confusing DME readings on the outbound leg of base turn procedures
2 Direct/arc arrivals only available with ATC clearance.

CHANGE: MAG VAR. D408. MOCA BOX.

AERO INFO DATE 26 NOV 09