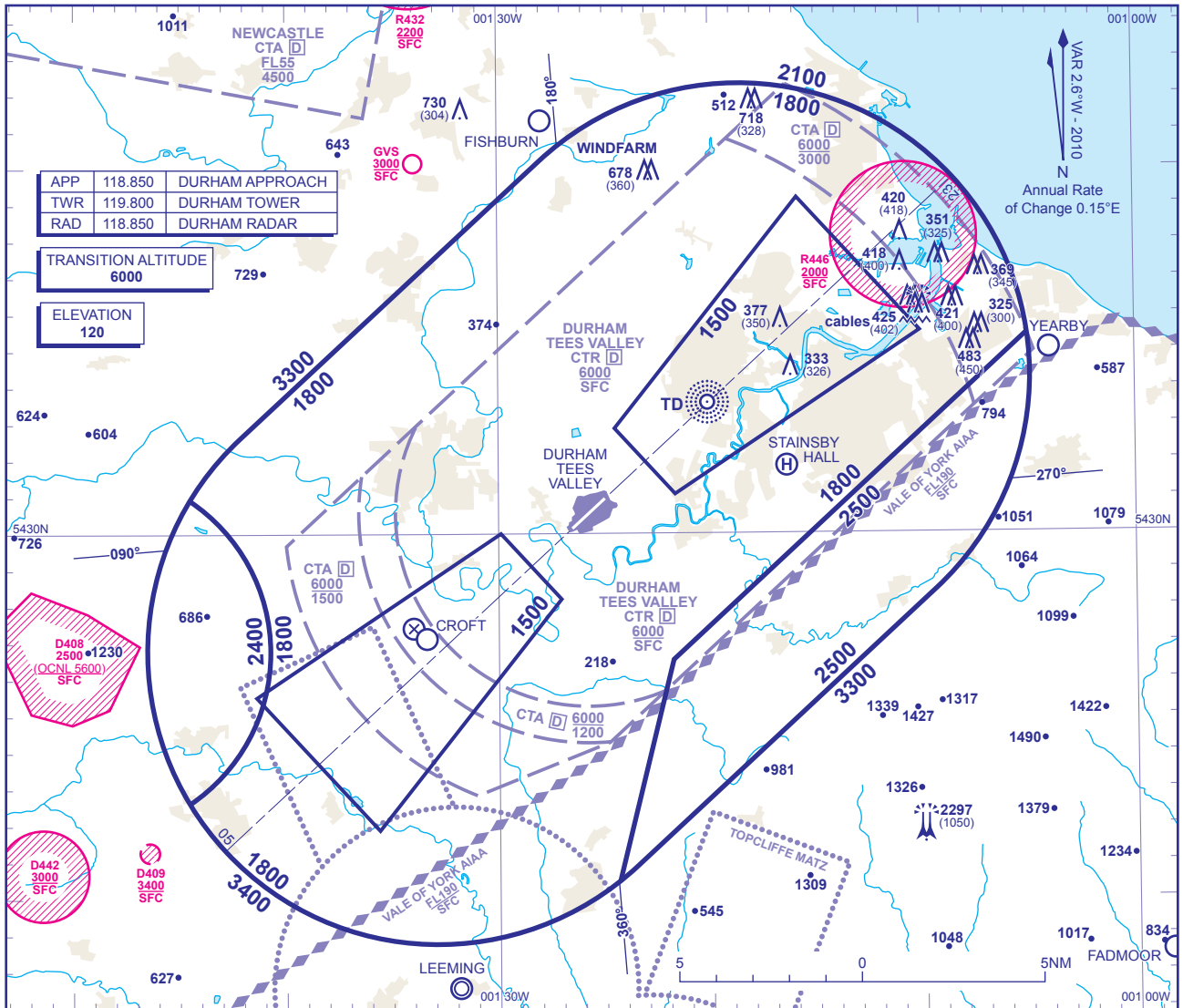


**ATC SURVEILLANCE MINIMUM ALTITUDE CHART - ICAO**

BEARINGS, TRACKS AND RADIALS ARE MAGNETIC  
ELEVATIONS IN FEET AMSL 982  
HEIGHTS IN FEET AGL (328)

**DURHAM TEES VALLEY**



**MINIMUM INITIAL ALTITUDE**

Within the ATC Surveillance Minimum Altitude area the minimum initial altitude to be allocated by the approach surveillance controller is:

- a) **1800** in the sector defined by the lateral limits; 543239N 0014208W - 544012N 0012800W thence clockwise by an arc of a circle radius 8NM centred on 543419N 0011841W to 543526N 0010504W - 542632N 0012148W - 542029N 0012424W thence clockwise by an arc of a circle radius 8NM centred on 542647N 0014919W to 543056N 0014432W thence clockwise by an arc of a circle radius 5NM centred on 543239N 0014208W.
- b) **2400** in the sector defined by the lateral limits; 543056N 0014432W thence clockwise by an arc of a circle radius 5NM centred on 542647N 0014919W to 542239N 0014432W thence clockwise by an arc of a circle radius 8NM centred on 542645N 0013547W to 543056N 0014432W.
- c) **2500** in the sector defined by the lateral limits; 542632N 0012148W - 543526N 0010504W thence clockwise by an arc of a circle radius 8NM centred on 543419N 0011841W to 542825N 0010926W - 542054N 0012333W thence clockwise by an arc of a circle radius 8NM centred on 542645N 0013547W to 542029N 0012424W - 542632N 0012148W.

Further descent to **1500** may be given within the Approach Areas shown when on 40° leg or Final Approach.

**OUTSIDE THE DESIGNATED ATC SURVEILLANCE MINIMUM ALTITUDE AREA**

The minimum altitude to be allocated by the approach surveillance controller will be either the Minimum Sector Altitude, or **1000** above any fixed obstacles:

- a) within 5NM of the aircraft\*, or
- b) within the sector 15NM ahead of and within 20° either side of the aircraft's track\*.

\*When the aircraft is within 15NM of the radar antennae, the 5NM in a) and the 15NM in b) may be reduced to 3NM and 10NM respectively.

**LOSS OF COMMUNICATION PROCEDURES**

**Initial Approach**

Continue visually or by means of an appropriate approved final approach aid. If not possible proceed at **2500**, or last assigned level if higher to

**NDB(L) TD†**

**Intermediate and Final Approach**

Continue visually or by means of an appropriate final approach aid. If not possible follow the Missed Approach Procedure to **NDB(L) TD†**.

† In all cases where the aircraft returns to the holding facility the procedure to be adopted is the Basic Radio Failure Procedure detailed at ENR 1.1.3.

**GENERAL INFORMATION**

1. Levels shown are based on QNH.
2. Only significant obstacles and dominant spot heights are shown.
3. The minimum levels shown within the ATC Surveillance Minimum Altitude area ensure terrain clearance in conformity with Rule 33 of the Rules of the Air Regulations in respect of obstacles within the ATCSMA area.
4. Minimum Sector Altitudes are based on obstacles and spot heights within 25NM of the Aerodrome Reference Point.
5. Controlled airspace with a base in excess of **5000** or FL55, as appropriate, is not shown.
6. The ATC Surveillance service is provided by Primary and/or Secondary Radar equipment.
7. **This chart may only be used for cross-checking of altitudes assigned when in receipt of an ATC Surveillance service.**

CHANGE: CARLTON MOOR WITHDRAWN.