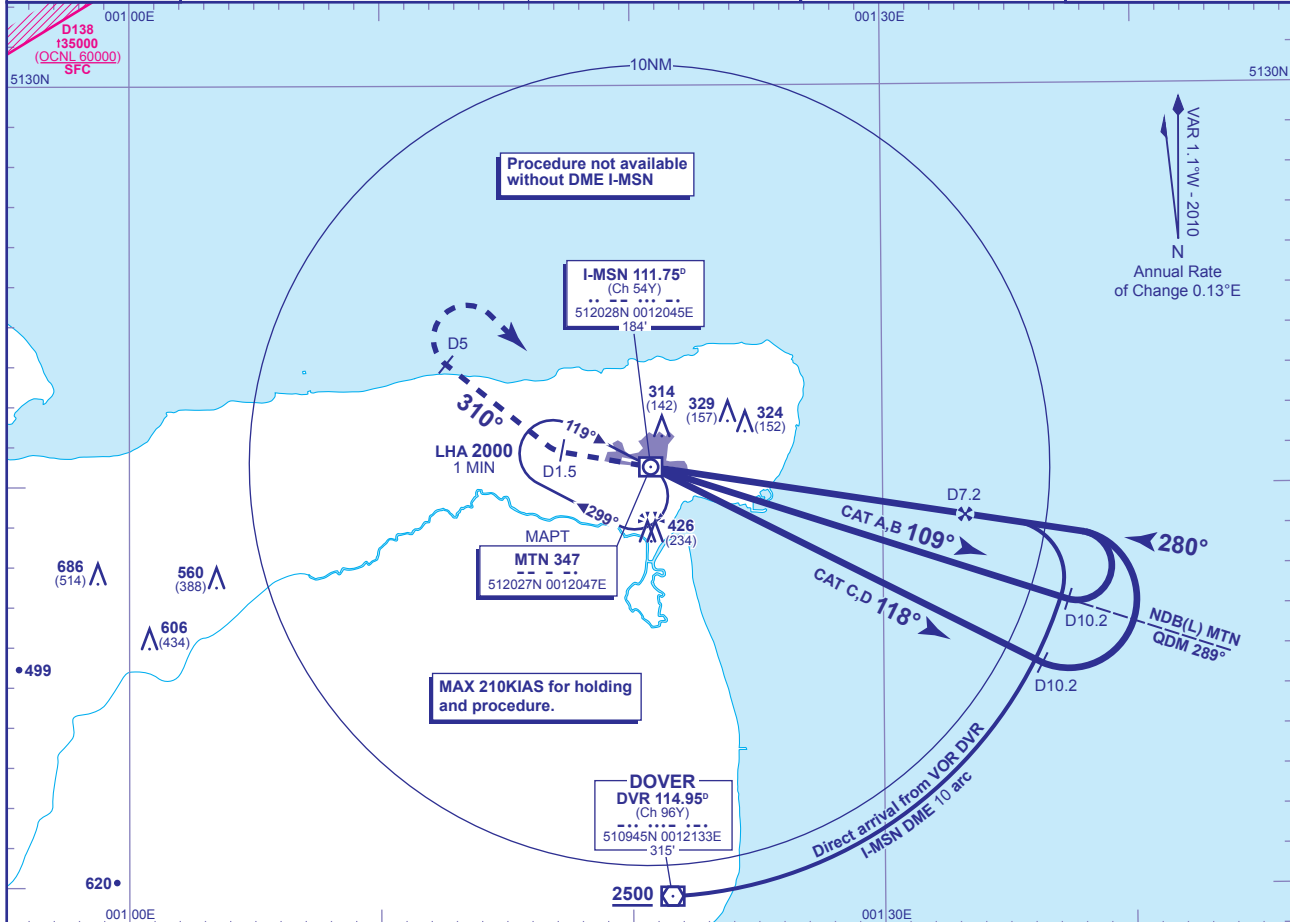


INSTRUMENT APPROACH CHART - ICAO

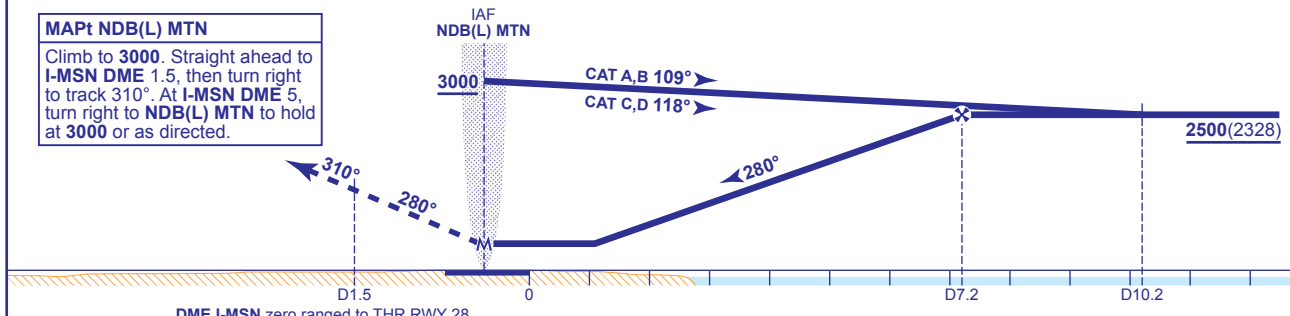
**MANSTON
NDB(L)/DME z
RWY 28**
(ACFT CAT A,B,C,D)

| | | | |
|----------------------------|--------------|---------------------|---|
| <p>MSA 25NM NDB(L) MTN</p> | APP 132.450 | MANSTON APPROACH | AD ELEVATION 178 |
| | TWR 119.925 | MANSTON TOWER | THR ELEVATION 172 |
| | RAD 132.450 | MANSTON RADAR | OBSTACLE ELEVATION 686 AMSL (514) (ABOVE THR) |
| | 126.350 | MANSTON DIRECTOR | |
| | ATIS 133.675 | MANSTON INFORMATION | BEARINGS ARE MAGNETIC |
| | | | TRANSITION ALTITUDE 3000 |



RECOMMENDED PROFILE Gradient 5.2%, 316FT/NM

| | | | | | | |
|-----------|------------|------------|------------|------------|-----------|----------|
| DME I-MSN | 7 | 6 | 5 | 4 | 3 | 2 |
| ALT(HGT) | 2440(2268) | 2120(1948) | 1810(1638) | 1490(1318) | 1170(998) | 860(688) |



| Aircraft Category | | A | B | C | D | Rate of descent FT/MIN | G/S KT | 160 | 140 | 120 | 100 | 80 |
|--------------------|------------|----------|----------|----------|----------|---------------------------|--------|-----|-----|-----|-----|-----|
| OCA (OCH) | Procedure | 560(388) | 560(388) | 560(388) | 560(388) | | | 840 | 740 | 630 | 530 | 420 |
| VM(C)OCA (OCH AAL) | Total Area | 620(442) | 730(552) | 830(652) | 870(692) | | | | | | | |

DIRECT ARRIVAL FROM VOR DVR
Overhead VOR DVR **not below 2500** establish on I-MSN DME 10 arc anti-clockwise. At lead radial NDB(L) MTN QDM 289° turn left to establish onto the FAT. When established continue as for main procedure.

- NOTES**
- FAT offset 2.6° from RWY C/L.
 - ATC will normally require aircraft to hold not lower than 3000.

CHANGE: MAG VAR. COM. PROCEDURE. MINIMA. MAP. NOTE 1.

AERO INFO DATE 1 FEB 10

AMDT AIRAC 4/10

Civil Aviation Authority