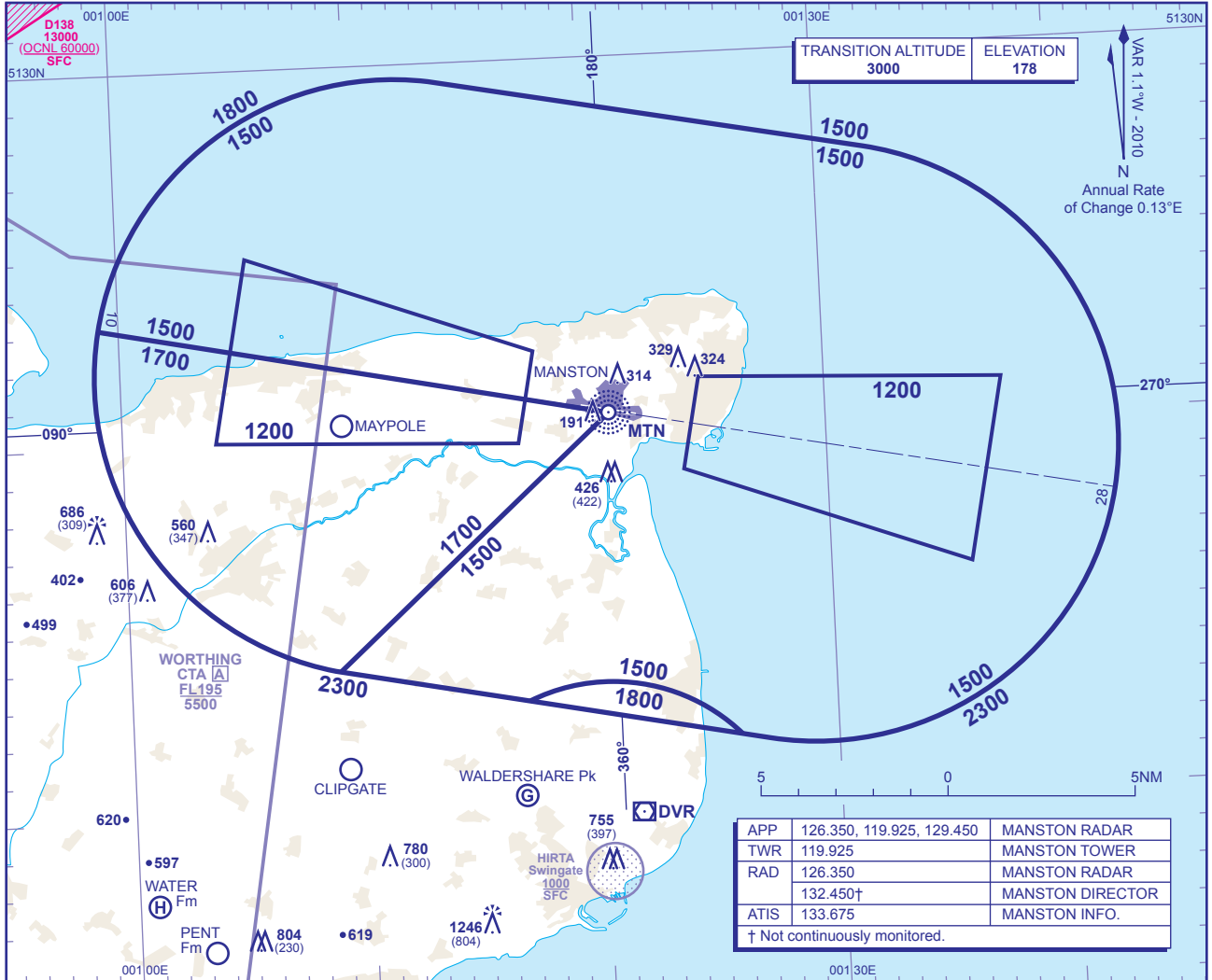


**ATC SURVEILLANCE MINIMUM ALTITUDE CHART - ICAO**

BEARINGS, TRACKS AND RADIALS ARE MAGNETIC  
 ELEVATIONS IN FEET AMSL **1246**  
 HEIGHTS IN FEET AGL (804)

**MANSTON**



**MINIMUM INITIAL ALTITUDE**

Within the ATC Surveillance Minimum Altitude area the minimum initial altitude to be allocated by the approach surveillance controller is:

- 1500** in the sector defined by the lateral limits; 512931N 0011342E - 512716N 0013209E thence clockwise by an arc of a circle radius 8NM centred on 511924N 000012942E to 511134N 0012702E - 511352N 0010841E thence clockwise by an arc of a circle radius 8NM centred on 512138N 0011140E to 512931N 0011342E, except;
- 1700** in the sector defined by the lateral limits; 512311N 0005909E - 512027N 0012047E - 511351N 0010854E - 511352N 0010841E thence clockwise by an arc of a circle radius 8NM centred on 512138N 0011140E to 512311N 0005909E.
- 1800** in the sector defined by the lateral limits; 511253N 0011637E thence clockwise by an arc of a circle radius 5NM centred on 510830N 0012005E to 511142N 0012557E - 511253N 0011637E.

Further descent to **1200** may be given within the Approach Areas shown when on 40° leg or Final Approach.

**OUTSIDE THE DESIGNATED ATC SURVEILLANCE MINIMUM ALTITUDE AREA**

The minimum altitude to be allocated by the approach surveillance controller will be either the Minimum Sector Altitude, or **1000** above any fixed obstacles:

- within 5NM of the aircraft\*, or
- within the sector 15NM ahead of and within 20° either side of the aircraft's track\*.

\*When the aircraft is within 15NM of the radar antennae, the 5NM in a) and the 15NM in b) may be reduced to 3NM and 10NM respectively.

**LOSS OF COMMUNICATION PROCEDURES**

**Initial Approach**  
 Continue visually or by means of an appropriate approved final approach aid. If not possible proceed at **2500**, or last assigned level if higher to **NDB(L) MTN†**.

**Intermediate and Final Approach**  
 Continue visually or by means of an appropriate final approach aid. If not possible follow the Missed Approach Procedure to **NDB(L) MTN†**.

† In all cases where the aircraft returns to the holding facility the procedure to be adopted is the Basic Radio Failure Procedure detailed at ENR 1.1.3.

**GENERAL INFORMATION**

- Levels shown are based on QNH.
- Only significant obstacles and dominant spot heights are shown.
- The minimum levels shown within the ATC Surveillance Minimum Altitude area ensure terrain clearance in conformity with Rule 33 of the Rules of the Air Regulations in respect of obstacles within the ATCSMA area.
- Minimum Sector Altitudes are based on obstacles and spot heights within 25NM of the Aerodrome Reference Point.
- Controlled airspace with a base in excess of **5000** or FL55, as appropriate, is not shown.
- This chart should only be used for the cross-checking of assigned altitudes whilst in receipt of an ATC Surveillance service.**

CHANGE: D138 ALTITUDE.

AERO INFO DATE 19 FEB 10