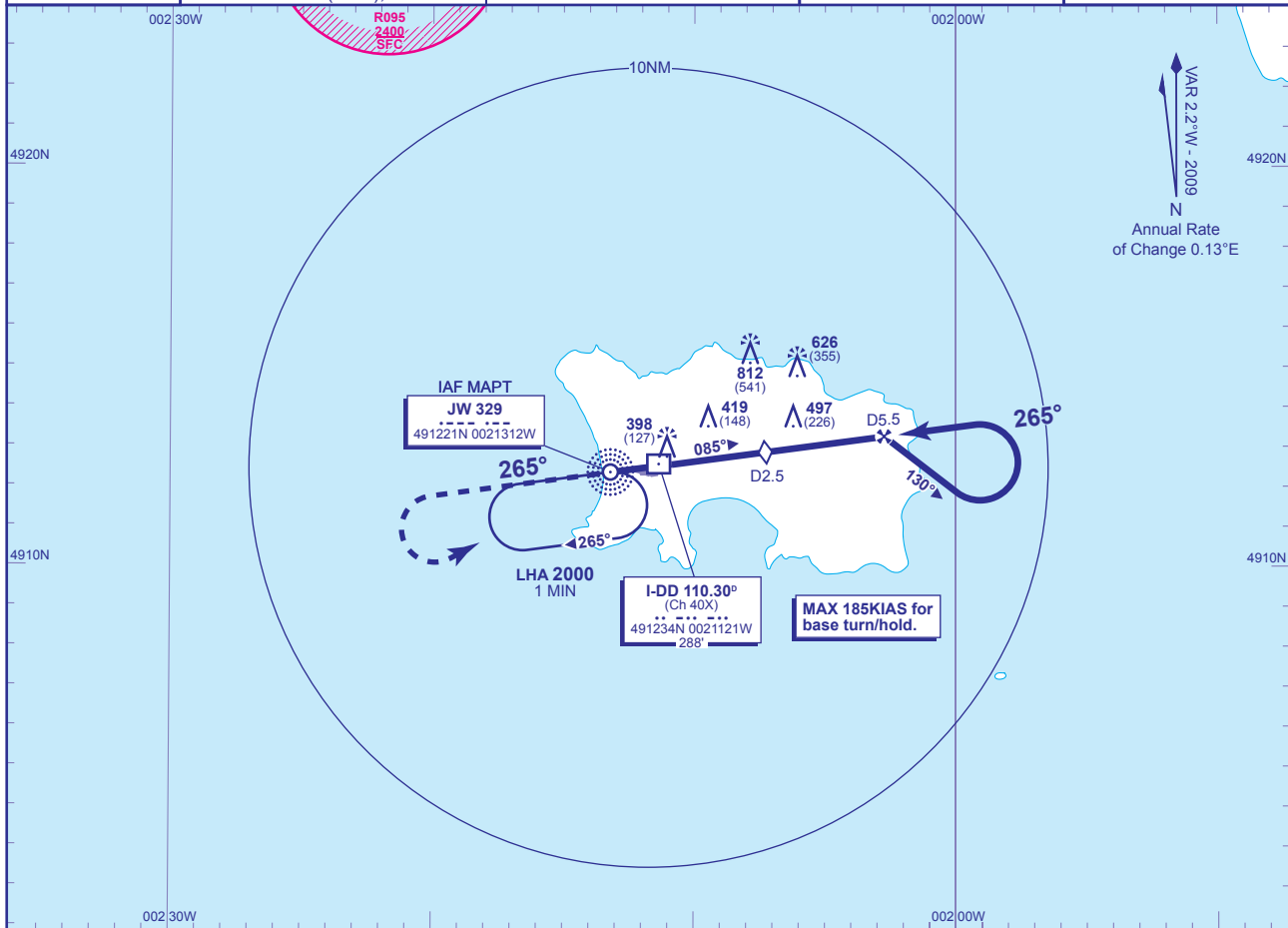


INSTRUMENT APPROACH CHART - ICAO

**JERSEY
NDB(L)/DME
RWY 27**
(ACFT CAT A,B,C,D)

	ATC 118.550, 125.200, 120.450	JERSEY RADAR	AD ELEVATION 277
	ATC 125.200, 120.450	JERSEY ZONE	THR ELEVATION 271
	APP 120.300, 121.500*	JERSEY APPROACH (*Emergency)	OBSTACLE ELEVATION 812 AMSL (541) (ABOVE THR)
	TWR 119.450	JERSEY TOWER	TRANSITION ALTITUDE 3000
	121.900	JERSEY GROUND	BEARINGS ARE MAGNETIC
ATIS 112.200 (VOR), 129.725	JERSEY INFORMATION		

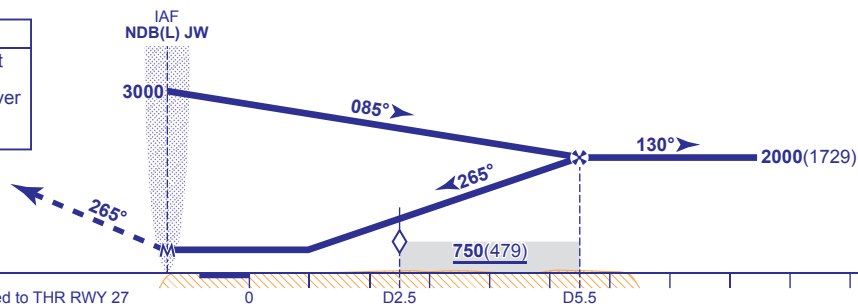


RECOMMENDED PROFILE Gradient 5.2%, 316FT/NM

DME I-DD	5	4	3	2	1
ALT(HGT)	1910(1639)	1590(1319)	1270(999)	960(689)	640(369)

MAPt NDB(L) JW

MAX 185KIAS. Climb straight ahead. At 2000 or 2MIN after passing NDB(L) JW, whichever is the later, turn left to NDB(L) JW to hold at 2000.



Aircraft Category	A	B	C	D	Rate of descent	G/S KT	160	140	120	100	80
OCA (OCH)	WITH DME	650(379)	650(379)	650(379)	650(379)	FT/MIN	840	740	630	530	420
	NO DME	800(529)	800(529)	800(529)	800(529)						
VM(C)OCA (OCH AAL)	Total Area	800(523)	800(523)	1300(1023)	1300(1023)						
	South of RWY 09/27	700(423)	700(423)	900(623)	900(623)						

AIRCRAFT UNABLE TO RECEIVE DME I-DD

As for main procedure except fly outbound for 2.5MIN (CAT A,B); 2MIN (CAT C,D) prior to procedure turn.

CHANGE: COM.

AERO INFO DATE 29 OCT 09