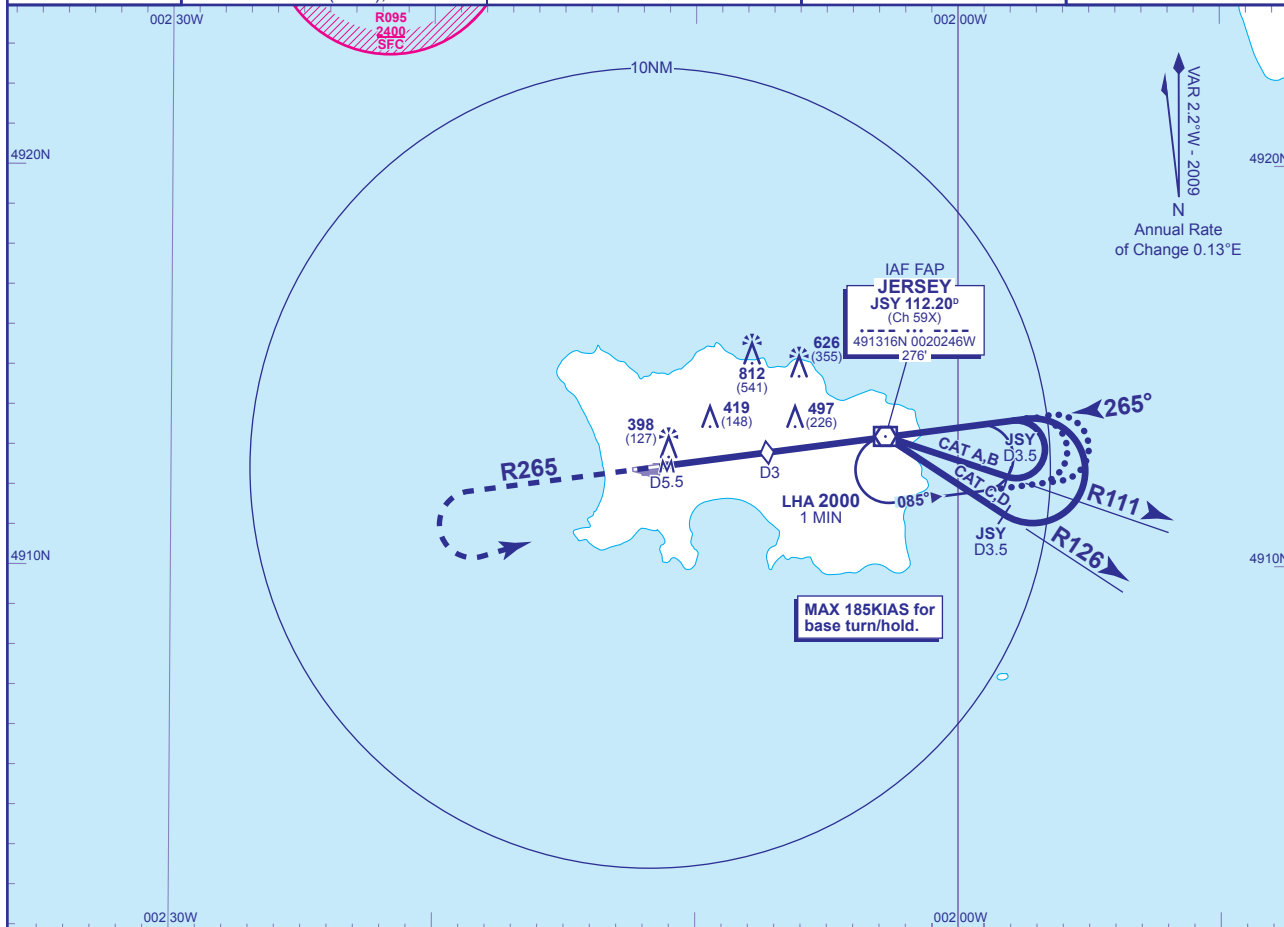


INSTRUMENT APPROACH CHART - ICAO

JERSEY VOR/DME RWY 27
(ACFT CAT A,B,C,D)

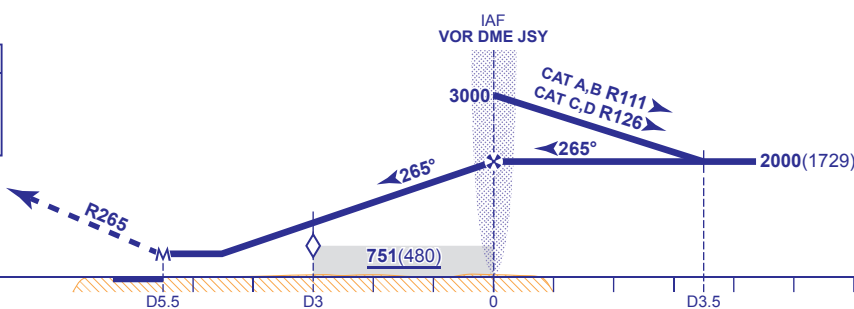
	ATC 118.550, 125.200, 120.450	JERSEY RADAR	AD ELEVATION 277
	ATC 125.200, 120.450	JERSEY ZONE	THR ELEVATION 271
	APP 120.300, 121.500*	JERSEY APPROACH (*Emergency)	OBSTACLE ELEVATION 812 AMSL (541) (ABOVE THR)
	TWR 119.450	JERSEY TOWER	TRANSITION ALTITUDE 3000
	121.900	JERSEY GROUND	BEARINGS ARE MAGNETIC
ATIS 112.200 (VOR), 129.725	JERSEY INFORMATION		



RECOMMENDED PROFILE Gradient 5.2%, 316FT/NM

DME JSY(to THR)	1(4.5)	2(3.5)	3(2.5)	4(1.5)
ALT(HGT)	1750(1479)	1430(1159)	1110(839)	800(529)

MAPt JSY DME 5.5 (THR RWY 27)
MAX 185KIAS. Climb straight ahead. At 2000 or 2MIN after MAPt, whichever is the later, turn left to VOR/DME JSY to hold at 2000.



Aircraft Category	A	B	C	D	Rate of descent	G/S KT	160	140	120	100	80
OCA (OCH)	WITH DME	661(390)	661(390)	661(390)	661(390)	FT/MIN	840	740	630	530	420
	NO DME	751(480)	751(480)	751(480)	751(480)	JSY to MAPt	MIN:SEC	2:01	2:21	2:45	3:21
VM(C)OCA (OCH AAL)	Total Area	800(523)	800(523)	1300(1023)	1300(1023)						
	South of RWY 09/27	700(423)	700(423)	900(623)	900(623)						

ALTERNATIVE PROCEDURE EXTENDED HOLDING PATTERN (MAX 185KIAS)

From overhead IAF VOR JSY at 3000. Extend the outbound leg of the holding pattern descending to 2000(1729). At JSY D4 (CAT A,B); JSY D4.5 (CAT C,D) turn left onto the FAT, when established, continue as for main procedure.

AIRCRAFT UNABLE TO RECEIVE DME JSY

MAIN PROCEDURE: Fly outbound for 1.5MIN (CAT A,B); 1MIN (CAT C,D) prior to base turn.
ALTERNATIVE PROCEDURE: Extend outbound leg for 1.5MIN prior to base turn descending to 2000(1729). When established continue as for main procedure.

CHANGE: COM.