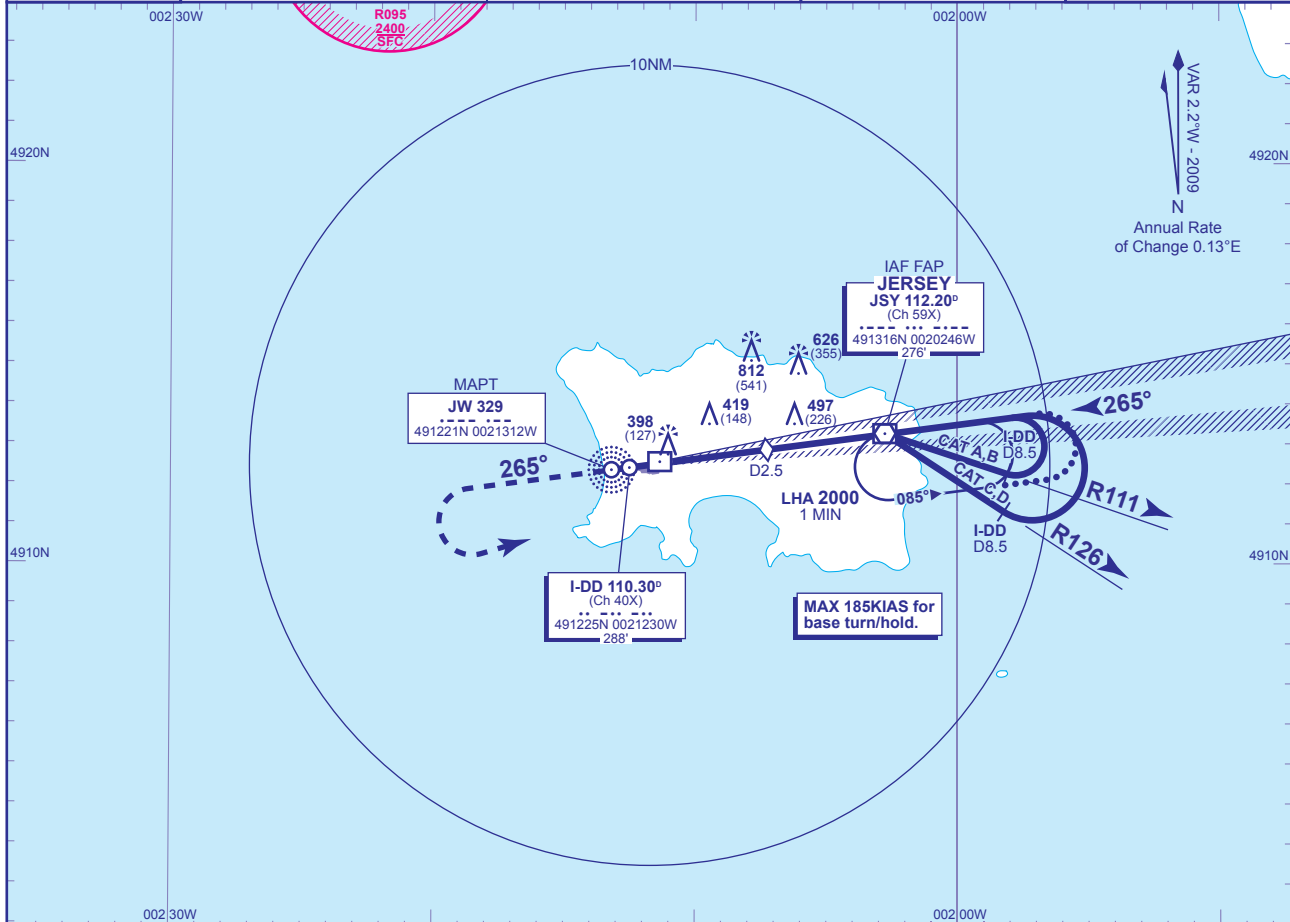


INSTRUMENT APPROACH CHART - ICAO

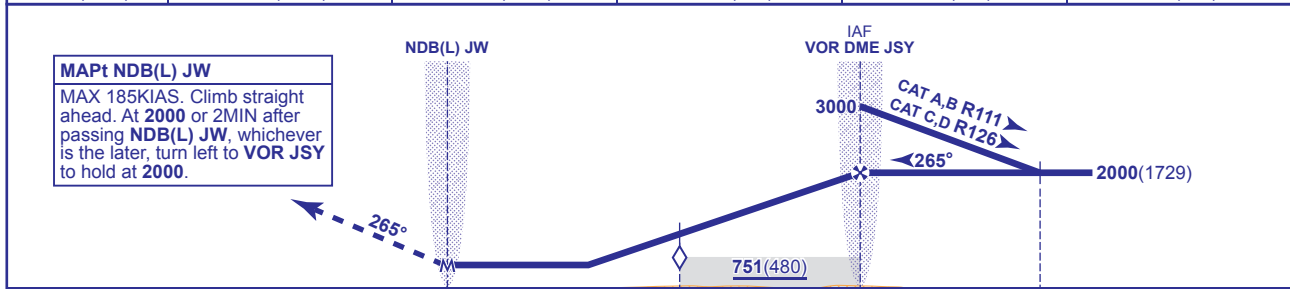
**JERSEY
LOC/DME/VOR
RWY 27**
(ACFT CAT A,B,C,D)

	ATC 118.550, 125.200, 120.450	JERSEY RADAR	AD ELEVATION 277
	ATC 125.200, 120.450	JERSEY ZONE	THR ELEVATION 271
	APP 120.300, 121.500*	JERSEY APPROACH (*Emergency)	OBSTACLE ELEVATION 812 AMSL (541) (ABOVE THR)
	TWR 119.450	JERSEY TOWER	TRANSITION ALTITUDE 3000
	121.900	JERSEY GROUND	BEARINGS ARE MAGNETIC
MSA 25NM VOR DME JSY	ATIS 112.200 (VOR), 129.725	JERSEY INFORMATION	



RECOMMENDED PROFILE Gradient 5.2%, 316FT/NM

DME I-DD	5	4	3	2	1
ALT(HGT)	1910(1639)	1590(1319)	1270(999)	960(689)	640(369)



DME I-DD zero ranged to THR RWY 27

Aircraft Category	A	B	C	D	Rate of descent	G/S KT	160	140	120	100	80
OCA (OCH)	WITH DME	621(350)	621(350)	621(350)	621(350)	FT/MIN	840	740	630	530	420
	NO DME	751(480)	751(480)	751(480)	751(480)						
VM(C)OCA (OCH AAL)	Total Area	800(523)	800(523)	1300(1023)	1300(1023)						
	South of RWY 09/27	700(423)	700(423)	900(623)	900(623)						

ALTERNATIVE PROCEDURE EXTENDED HOLDING PATTERN (MAX 185KIAS)
 Arrive at IAF VOR JSY at 3000. Extend the outbound leg of the holding pattern descending to 2000(1729). At I-DD D9.5 turn left onto the LOC, when established, continue as for main procedure.

AIRCRAFT UNABLE TO RECEIVE DME I-DD
 MAIN PROCEDURE: Fly outbound for 1.5MIN (CAT A,B); 1MIN (CAT C,D) prior to base turn.
 ALTERNATIVE PROCEDURE: Extend outbound leg for 1.5MIN prior to base turn.
 When established on LOC descend to MDH

CHANGE: COM.

AERO INFO DATE 29 OCT 09