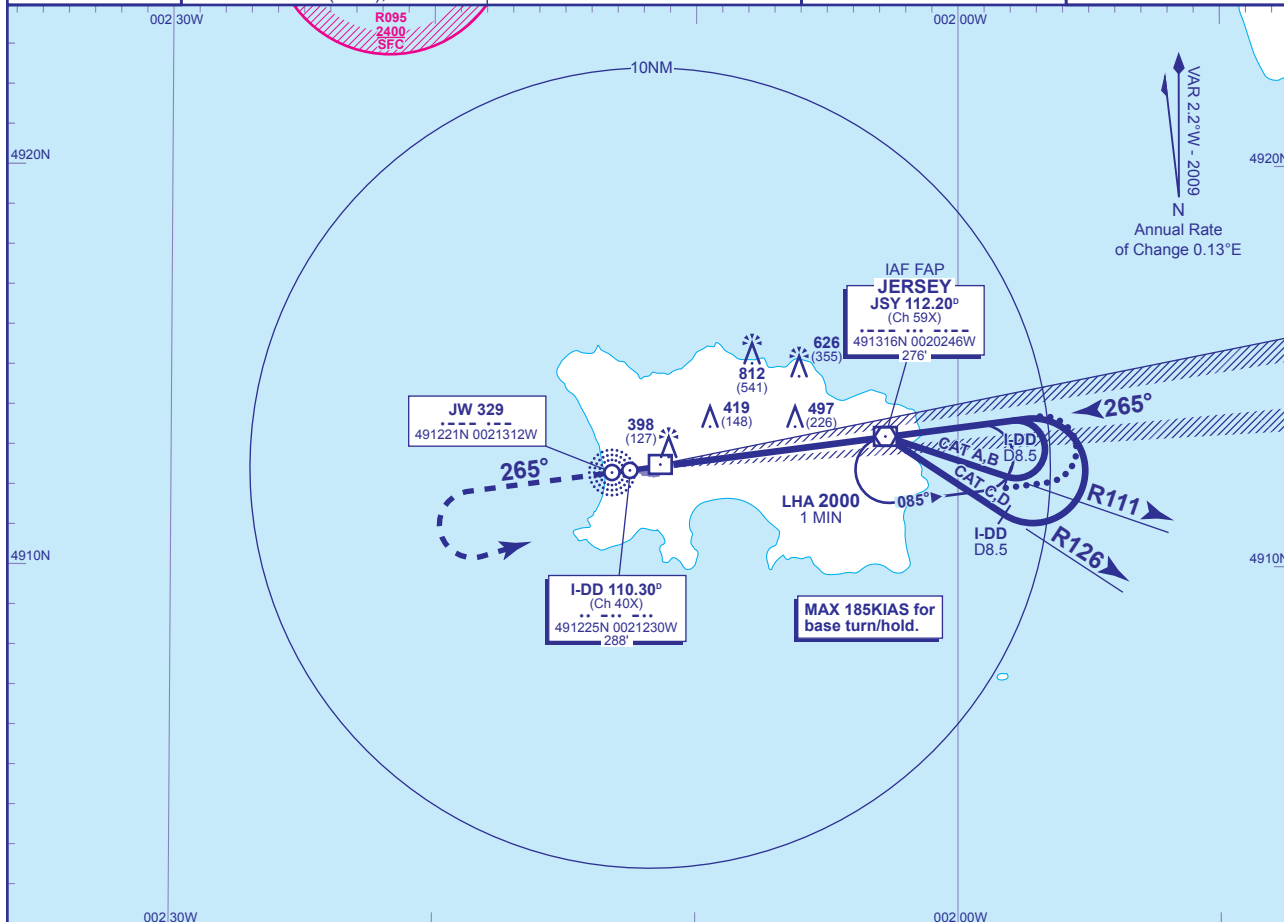


**INSTRUMENT APPROACH CHART - ICAO**

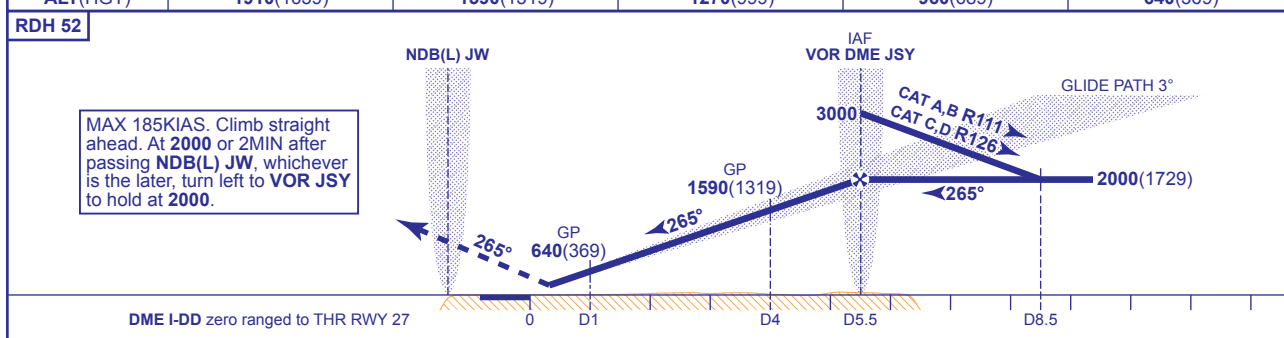
**JERSEY ILS/DME/VOR RWY 27**  
(ACFT CAT A,B,C,D)

	ATC 118.550, 125.200, 120.450	JERSEY RADAR	AD ELEVATION 277
	ATC 125.200, 120.450	JERSEY ZONE	THR ELEVATION 271
	APP 120.300, 121.500*	JERSEY APPROACH (*Emergency)	OBSTACLE ELEVATION 812 AMSL (541) (ABOVE THR)
	TWR 119.450	JERSEY TOWER	TRANSITION ALTITUDE 3000
	121.900	JERSEY GROUND	BEARINGS ARE MAGNETIC
ATIS 112.200 (VOR), 129.725	JERSEY INFORMATION		



**RECOMMENDED PROFILE GLIDE PATH 3°, 316FT/NM**

DME I-DD	5	4	3	2	1
ALT(HGT)	1910(1639)	1590(1319)	1270(999)	960(689)	640(369)



Aircraft Category	A	B	C	D	Rate of descent	G/S KT	160	140	120	100	80
OCA (OCH)	CAT I	434(163)	442(171)	450(179)	460(189)	FT/MIN	840	740	630	530	420
VM(C)OCA (OCH AAL)	Total Area	800(523)	800(523)	1300(1023)	1300(1023)						
	South of RWY 09/27	700(423)	700(423)	900(623)	900(623)						

**ALTERNATIVE PROCEDURE EXTENDED HOLDING PATTERN (MAX 185KIAS)**  
 Arrive at IAF VOR JSY at 3000. Extend the outbound leg of the holding pattern descending to 2000(1729). At I-DD D9.5 turn left onto the LOC, when established, continue as for main procedure.

**AIRCRAFT UNABLE TO RECEIVE DME I-DD**  
 MAIN PROCEDURE: Advise ATC. Radar ranges will be passed equivalent to D8.5 outbound and D4 inbound.  
 ALTERNATIVE PROCEDURE: Advise ATC. Radar ranges will be passed equivalent to D9.5 outbound and D4 inbound.

**NOTE** Full scale fly-up indication left of C/L may not be maintained prior to joining the glide path from below.

**CHANGE:** COM.