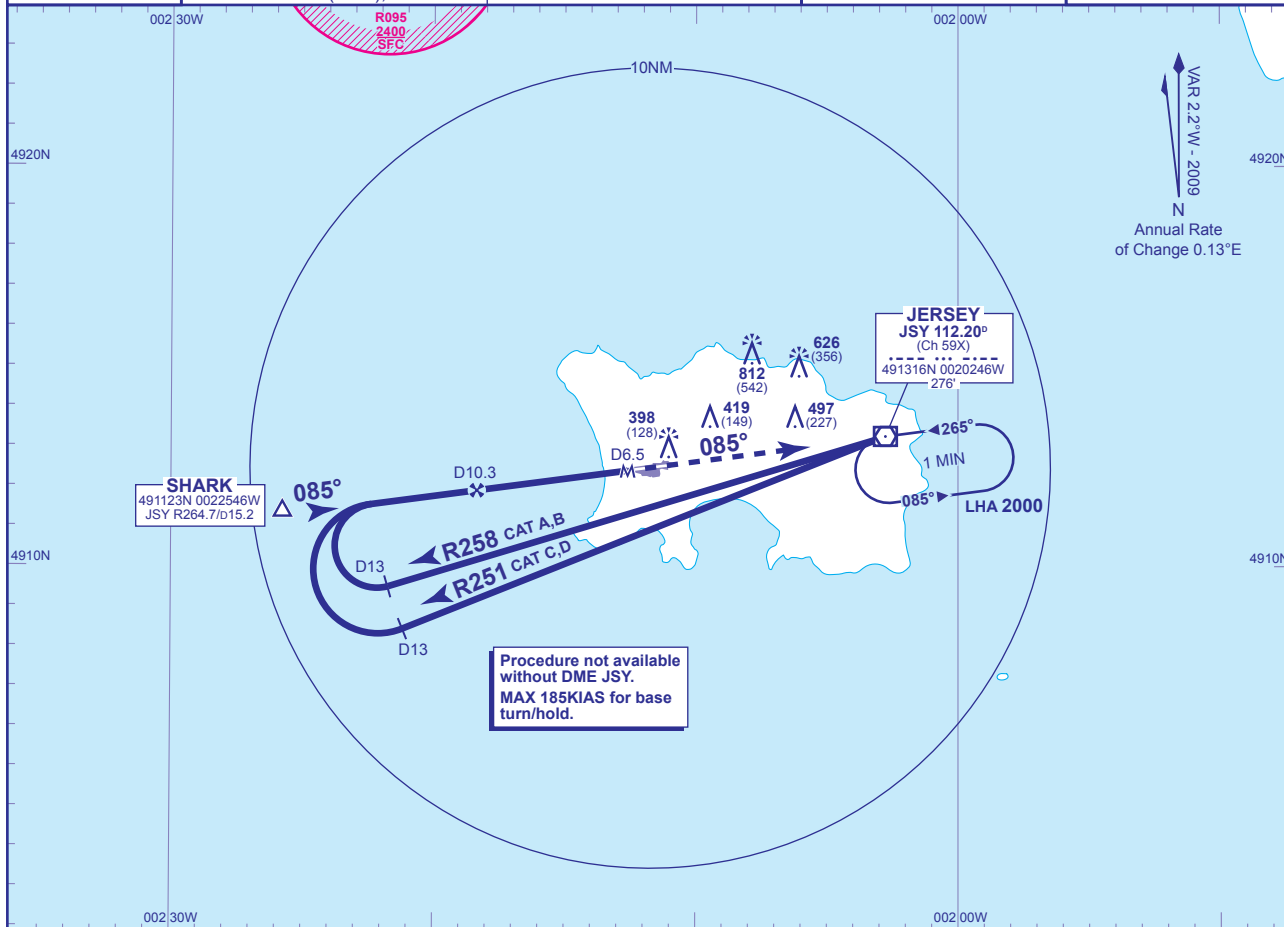


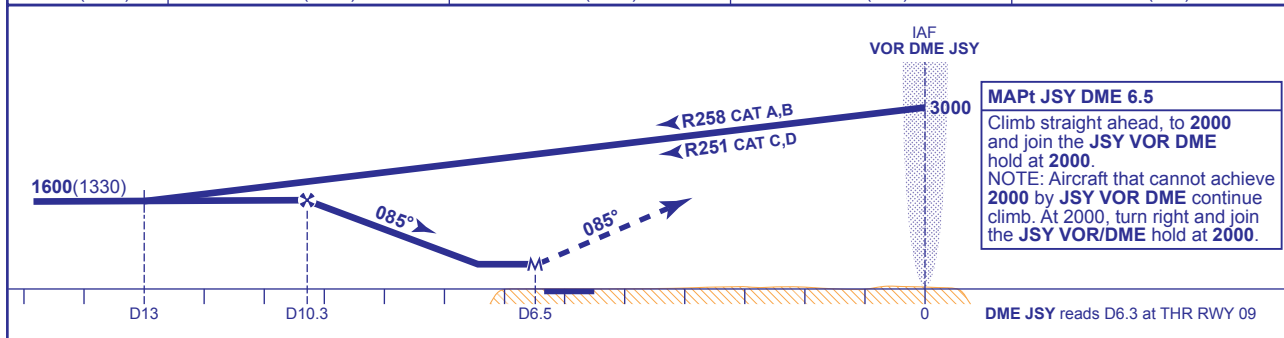
**INSTRUMENT APPROACH CHART - ICAO**

**JERSEY  
VOR/DME  
RWY 09**  
(ACFT CAT A,B,C,D)

	ATC 118.550, 125.200, 120.450	JERSEY RADAR	AD ELEVATION 277
	ATC 125.200, 120.450	JERSEY ZONE	THR ELEVATION 270
	APP 120.300, 121.500*	JERSEY APPROACH (*Emergency)	OBSTACLE ELEVATION 812 AMSL (542) (ABOVE THR)
	TWR 119.450	JERSEY TOWER	BEARINGS ARE MAGNETIC
	121.900	JERSEY GROUND	TRANSITION ALTITUDE 3000
MSA 25NM VOR DME JSY	ATIS 112.200 (VOR), 129.725	JERSEY INFORMATION	



RECOMMENDED PROFILE Gradient 5.2%, 320FT/NM				
THR (JSY DME)	4(10.3)	3(9.3)	2(8.3)	1(7.3)
ALT(HGT)	1600(1330)	1280(1010)	960(690)	640(370)



Aircraft Category	A	B	C	D	Rate of descent	G/S KT	160	140	120	100	80
OCA (OCH)	Procedure	650(380)	650(380)	650(380)	650(380)	FT/MIN	850	750	640	530	430
	Total Area	800(523)	800(523)	1300(1023)	1300(1023)						
VM(C)OCA (OCH AAL)	South of RWY 09/27	700(423)	700(423)	900(623)	900(623)						

**DIRECT ARRIVALS**  
Subject to ATC approval, following standard arrival routes to SHARK, from SHARK establish on extended FAT JSY R265, then descend to 1600(1330) then continue as for basic procedure.

CHANGE: COM.

AERO INFO DATE 29 OCT 09