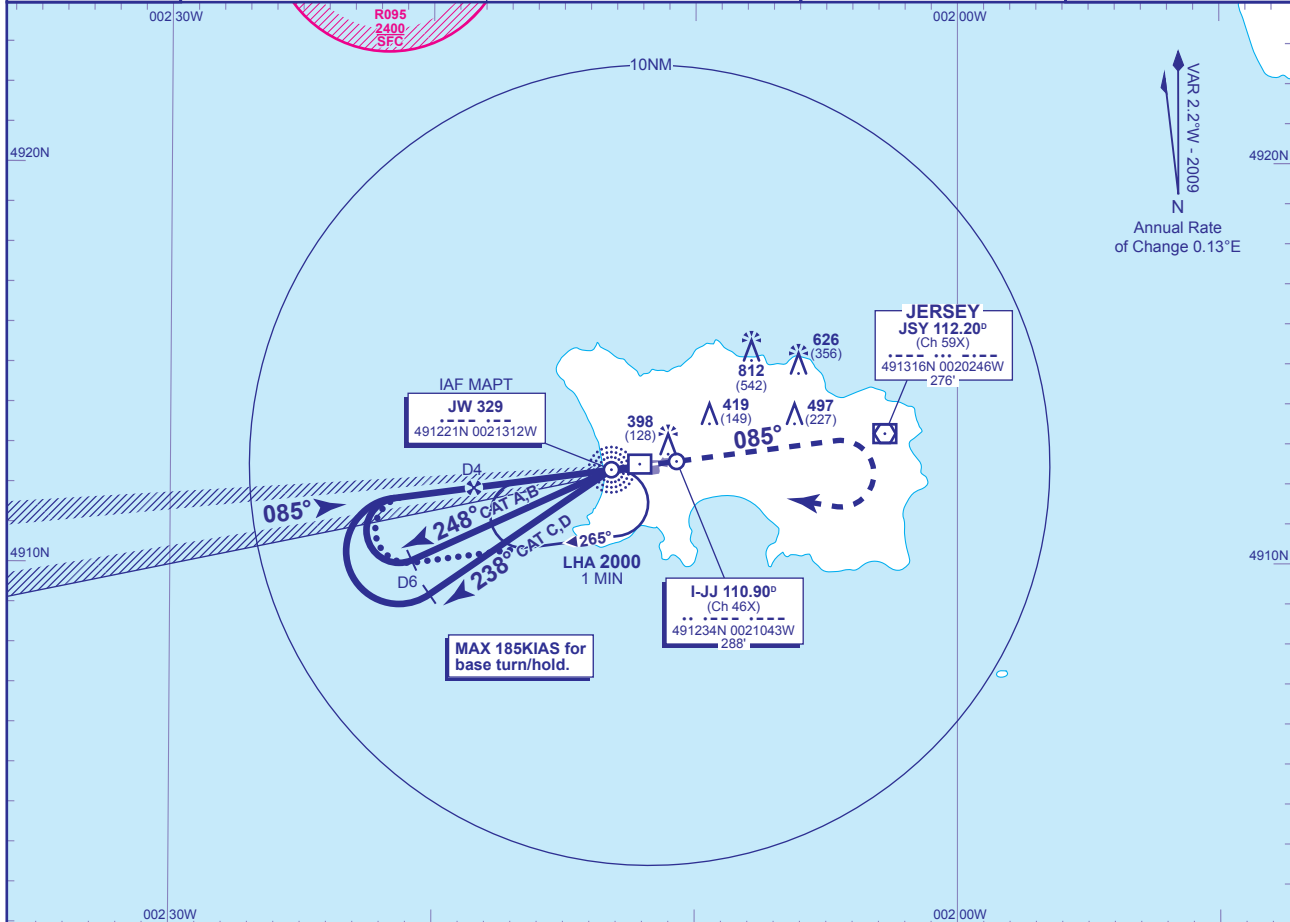


INSTRUMENT APPROACH CHART - ICAO

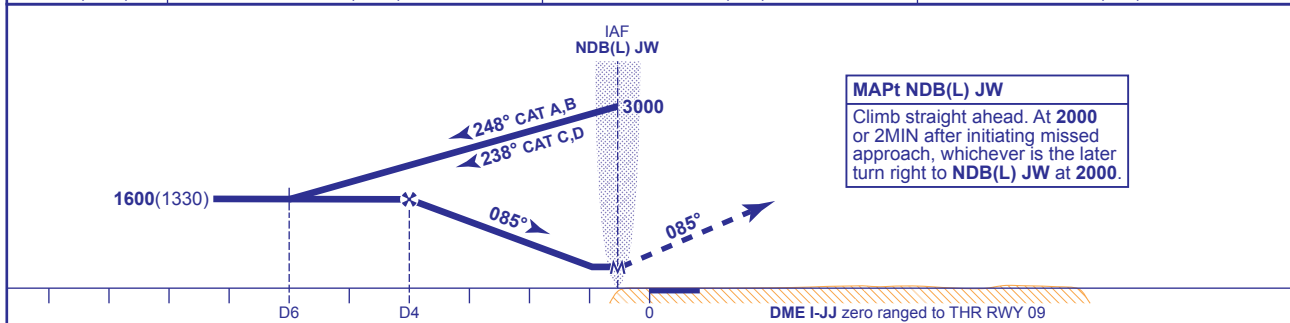
**JERSEY
LOC/DME/NDB(L)
RWY 09**
(ACFT CAT A,B,C,D)

	ATC 118.550, 125.200, 120.450	JERSEY RADAR	AD ELEVATION 277
	ATC 125.200, 120.450	JERSEY ZONE	THR ELEVATION 270
	APP 120.300, 121.500*	JERSEY APPROACH (*Emergency)	OBSTACLE ELEVATION 812 AMSL (542) (ABOVE THR)
	TWR 119.450	JERSEY TOWER	BEARINGS ARE MAGNETIC
	121.900	JERSEY GROUND	TRANSITION ALTITUDE 3000
ATIS 112.200 (VOR), 129.725	JERSEY INFORMATION		



RECOMMENDED PROFILE Gradient 5.2%, 320FT/NM

DME I-JJ	3	2	1
ALT(HGT)	1280(1010)	960(690)	640(370)



Aircraft Category	A	B	C	D	Rate of descent	G/S KT	160	140	120	100	80
OCA (OCH)	WITH DME	590(320)	590(320)	590(320)	590(320)	FT/MIN	850	750	640	530	430
	NO DME	640(370)	640(370)	640(370)	640(370)						
VM(C)OCA (OCH AAL)	Total Area	800(523)	800(523)	1300(1023)	1300(1023)						
	South of RWY 09/27	700(423)	700(423)	900(623)	900(623)						

ALTERNATIVE PROCEDURE EXTENDED HOLDING PATTERN (MAX 185KIAS)

Arrive at IAF NDB(L) JW at 3000. Extend the outbound leg of the NDB(L) JW holding pattern to I-JJ D6 descending to 1600(1330). Turn right onto the LOC, when established, continue as for main procedure.

AIRCRAFT UNABLE TO RECEIVE DME I-JJ

As for main and alternative procedure except fly outbound for 3MIN (CAT A); 2.5MIN (CAT B); 2MIN (CAT C,D) prior to base turn. When established on LOC descend to MDH.

CHANGE: COM.

AERO INFO DATE 29 OCT 09

AMDT 1/10

Civil Aviation Authority