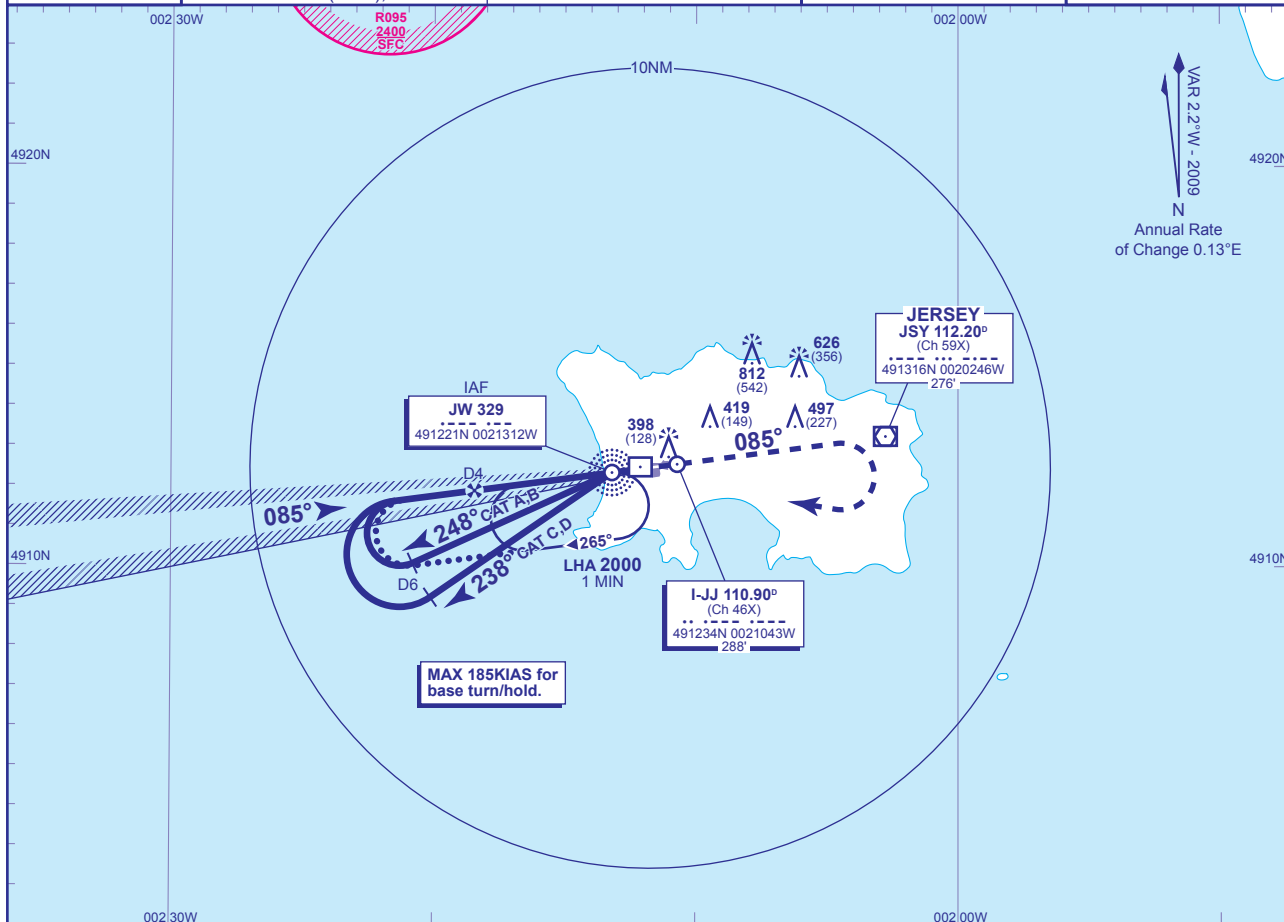


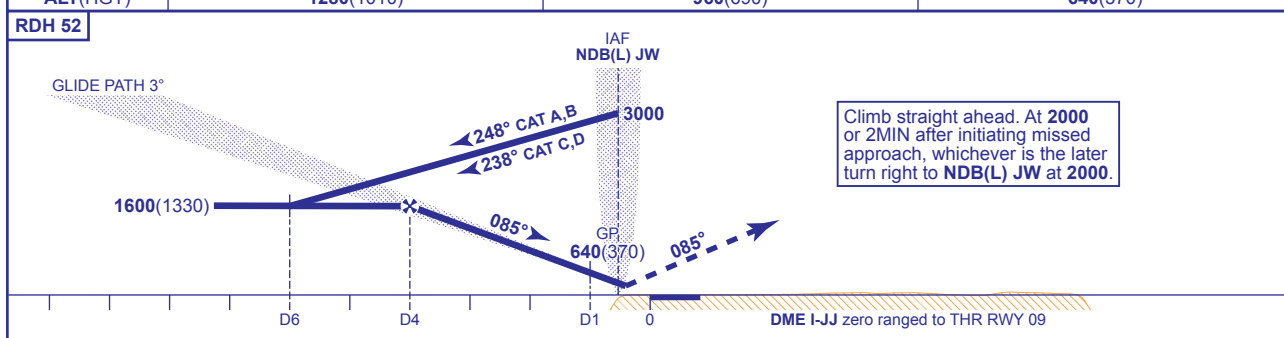
INSTRUMENT APPROACH CHART - ICAO

JERSEY ILS/DME/NDB(L) RWY 09
(ACFT CAT A,B,C,D)

| | | | |
|-----------------------------|-------------------------------|------------------------------|---|
| | ATC 118.550, 125.200, 120.450 | JERSEY RADAR | AD ELEVATION 277 |
| | ATC 125.200, 120.450 | JERSEY ZONE | THR ELEVATION 270 |
| | APP 120.300, 121.500* | JERSEY APPROACH (*Emergency) | OBSTACLE ELEVATION 812 AMSL (542) (ABOVE THR) |
| | TWR 119.450 | JERSEY TOWER | TRANSITION ALTITUDE 3000 |
| | 121.900 | JERSEY GROUND | BEARINGS ARE MAGNETIC |
| ATIS 112.200 (VOR), 129.725 | JERSEY INFORMATION | | |



| RECOMMENDED PROFILE GLIDE PATH 3°, 320FT/NM | | | |
|---|------------|----------|----------|
| DME I-JJ | 3 | 2 | 1 |
| ALT(HGT) | 1280(1010) | 960(690) | 640(370) |



| Aircraft Category | | A | B | C | D | Rate of descent | G/S KT | 160 | 140 | 120 | 100 | 80 |
|--------------------|--------------------|----------|----------|------------|------------|-----------------|--------|-----|-----|-----|-----|-----|
| OCA (OCH) | CAT I | 410(140) | 419(149) | 430(160) | 443(173) | | FT/MIN | 850 | 750 | 640 | 530 | 430 |
| VM(C)OCA (OCH AAL) | Total Area | 800(523) | 800(523) | 1300(1023) | 1300(1023) | | | | | | | |
| | South of RWY 09/27 | 700(423) | 700(423) | 900(623) | 900(623) | | | | | | | |

ALTERNATIVE PROCEDURE EXTENDED HOLDING PATTERN (MAX 185KIAS)
Arrive at IAF NDB(L) JW at 3000. Extend the outbound leg of the NDB(L) JW holding pattern to I-JJ D6 descending to 1600(1330). Turn right onto the LOC, when established, continue as for main procedure.

AIRCRAFT UNABLE TO RECEIVE DME I-JJ
Advise ATC. Radar ranges will be passed equivalent to D6 outbound and D4 inbound.

CHANGE: COM.

AERO INFO DATE 29 OCT 09