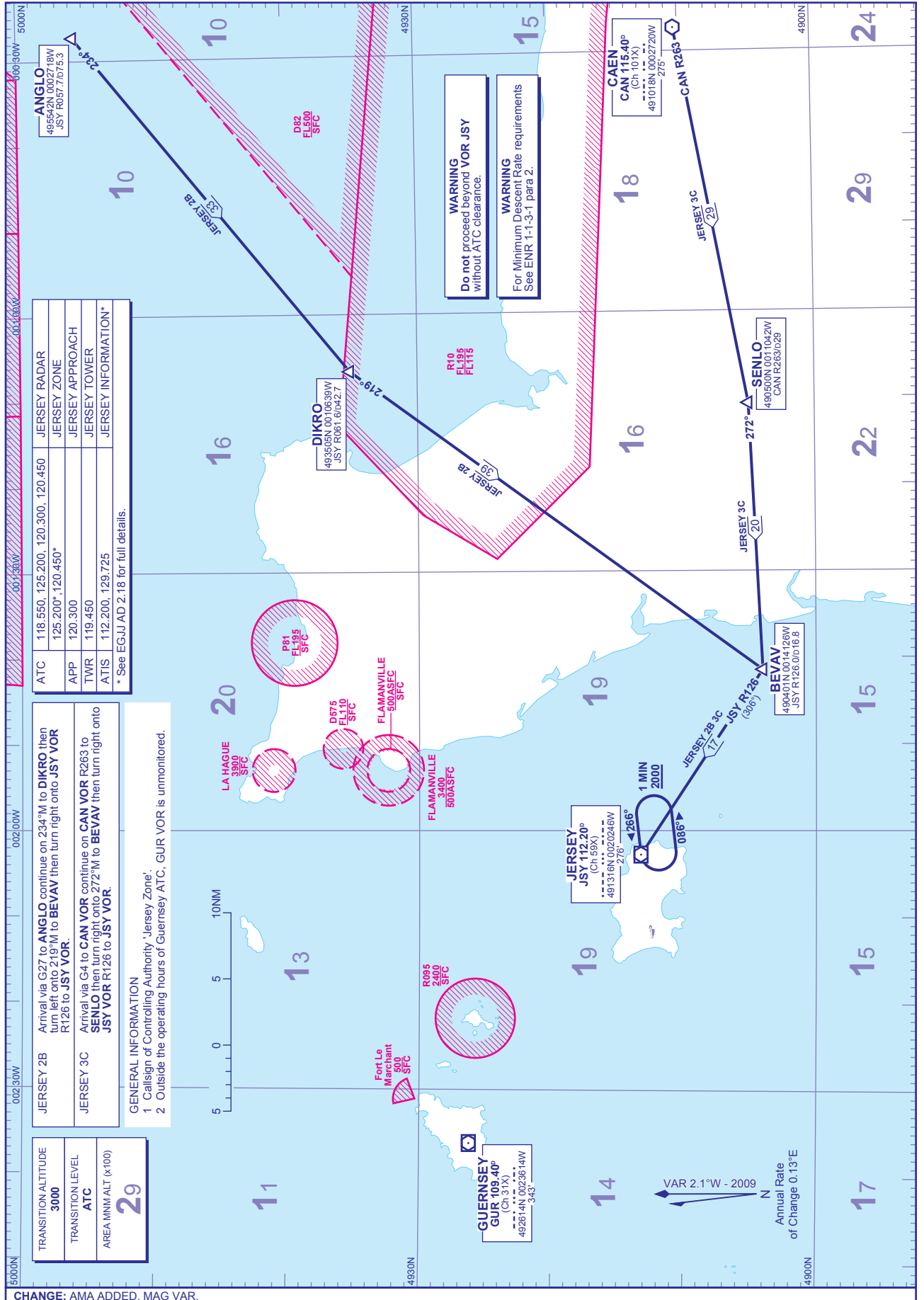


STANDARD ARRIVAL CHART - INSTRUMENT (STAR) - ICAO

DISTANCES IN NAUTICAL MILES
BEARINGS, TRACKS AND RADIALS ARE MAGNETIC
ALTITUDES AND ELEVATIONS ARE IN FEET

JERSEY
via JSY RWY 27 (east)



ATC	118.550, 125.200, 120.300, 120.450	JERSEY RADAR
APP	125.200*, 120.450*	JERSEY ZONE
TWR	120.300	JERSEY APPROACH
ATIS	119.450	JERSEY TOWER
	112.200, 129.725	JERSEY INFORMATION*

* See EGJJ AD 2.18 for full details.

JERSEY 2B Arrival via G27 to **ANGLO** continue on 234°M to **DIKRO** then turn left onto 219°M to **BEVAV** then turn right onto **JSY VOR R126** to **JSY VOR**.

JERSEY 3C Arrival via G4 to **CAN VOR** continue on **CAN VOR R263** to **SENLO** then turn right onto 272°M to **BEVAV** then turn right onto **JSY VOR R126** to **JSY VOR**.

GENERAL INFORMATION
1 Callsign of Controlling Authority 'Jersey Zone'.
2 Outside the operating hours of Guernsey ATC, GUR VOR is unmonitored.

TRANSITION ALTITUDE	3000
TRANSITION LEVEL	ATC
AREA MNM ALT (x100)	29

CHANGE: AMA ADDED. MAG VAR.

AERO INFO DATE 23 DEC 09