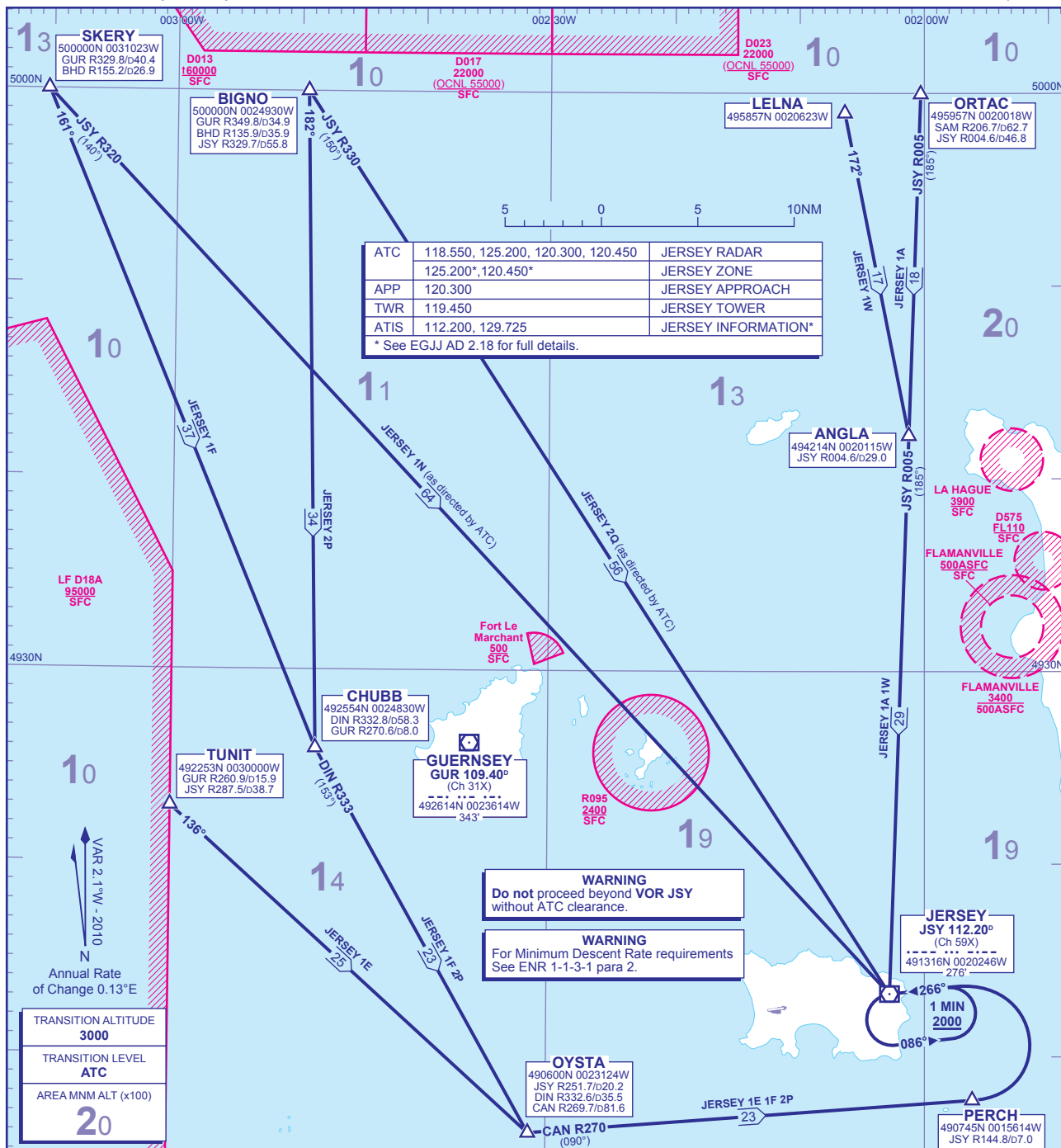


STANDARD ARRIVAL CHART - INSTRUMENT (STAR) - ICAO

DISTANCES IN NAUTICAL MILES
BEARINGS, TRACKS AND RADIALS ARE MAGNETIC
ALTITUDES AND ELEVATIONS ARE IN FEET

JERSEY via JSY RWY 27 (north)



WARNING
Do not proceed beyond VOR JSY without ATC clearance.

WARNING
For Minimum Descent Rate requirements See ENR 1-1-3-1 para 2.

- JERSEY 1A Arrival via L980, R84, Q41 to **ORTAC** continue on **JSY VOR R005** to **ANGLA** then **JSY VOR**.
- JERSEY 1E Arrival via G4 (LIZAD) to **TUNIT** continue on 136°M to **OYSTA** then turn left onto **CAN VOR R270** to **PERCH** then turn left to intercept **JSY VOR R086** to **JSY VOR**.
- JERSEY 1F Arrival via N862 (BHD) to **SKERY** continue on 161°M to **CHUBB** then turn left onto **DIN VOR R333** to **OYSTA** then turn left onto **CAN VOR R270** to **PERCH** then turn left to intercept **JSY VOR R086** to **JSY VOR**.
- JERSEY 1N Arrival via N862 (BHD) to **SKERY** continue on **JSY VOR R320** to **JSY VOR**.
- JERSEY 2P Arrival via CDR Y91 to **BIGNO** continue on 182°M to **CHUBB** then turn left onto **DIN VOR R333** to **OYSTA** then turn left onto **CAN VOR R270** to **PERCH** then turn left to intercept **JSY VOR R086** to **JSY VOR**.
- JERSEY 2Q Arrival via CDR Y91 to **BIGNO** continue on **JSY VOR R330** to **JSY VOR**.
- JERSEY 1W Arrival via (U)N621 (FL200 & above) to **LELNA** continue on 172°M to **ANGLA** then turn right onto **JSY VOR R005** to **JSY VOR**. FL200 by 10NM before **LELNA**

GENERAL INFORMATION

- 1 ROUTINGS FOR ARRIVALS FROM THE FIR
From North: 500000N - **JSY VOR** as directed by ATC.
North East: Zone Boundary - **JSY VOR**.
- 2 Callsign of Controlling Authority 'Jersey Zone'.
- 3 Aircraft via **SKERY** or **BUKLI** will use STAR JERSEY 1F or 2P as appropriate unless instructed by ATC to use JERSEY 1N or 2Q. JERSEY 1N or 2Q must not be used for flight planning purposes.
- 4 Outside the operating hours of Guernsey ATC, GUR VOR is unmonitored.

CHANGE: AMA ADDED. FIXES/BEARINGS AMENDED. MAG VAR. AIRWAY R41 REDESIGNATED Q41.

AERO INFO DATE 23 DEC 09