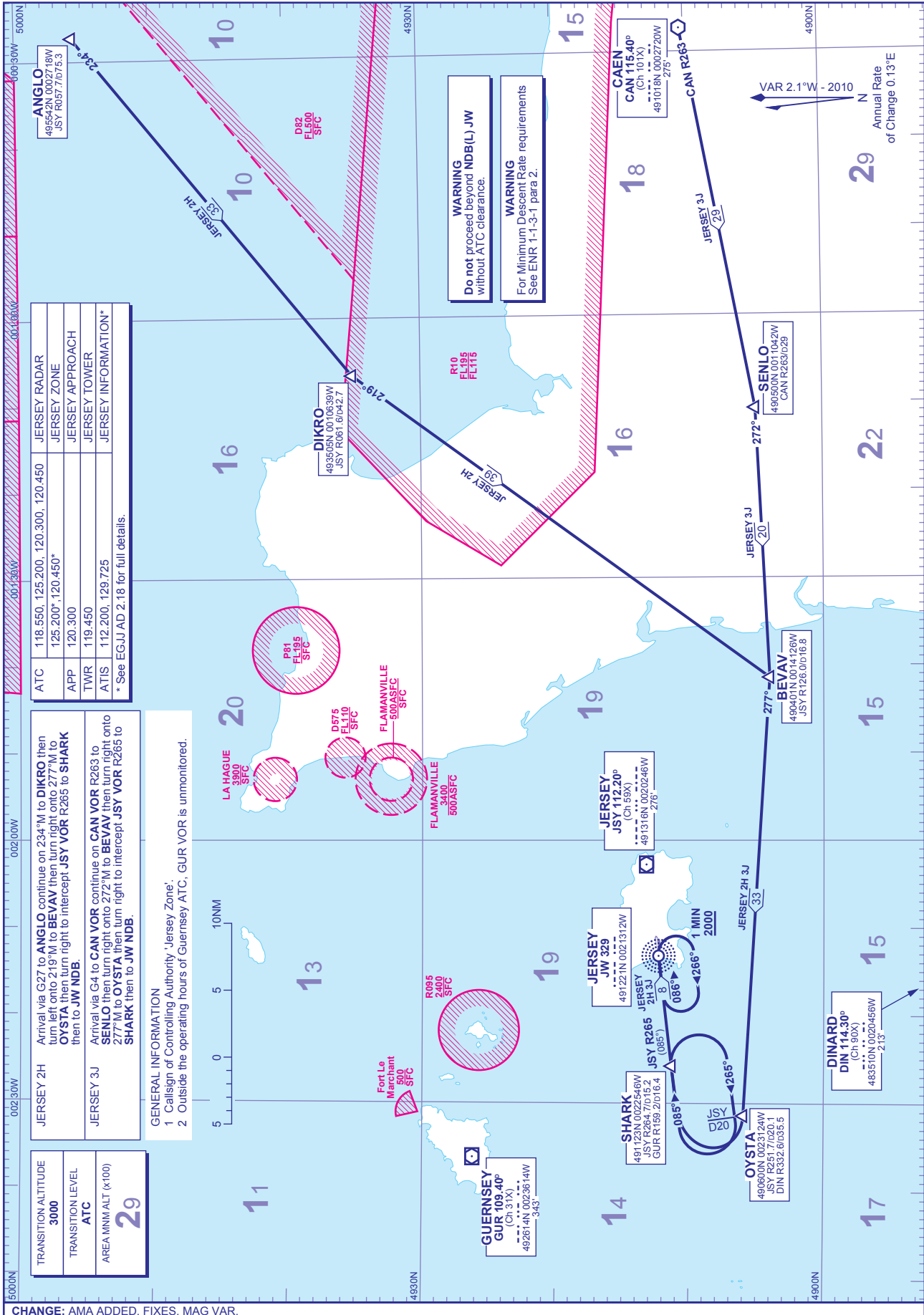


STANDARD ARRIVAL CHART - INSTRUMENT (STAR) - ICAO

DISTANCES IN NAUTICAL MILES
BEARINGS, TRACKS AND RADIALS ARE MAGNETIC
ALTITUDES AND ELEVATIONS ARE IN FEET

JERSEY via JW RWY 09 (east)



JERSEY 2H
Arrival via G27 to ANGL0 continue on 234°M to DIKRO then left onto 219°M to BEVAV then turn right onto 277°M to OYSTA then turn right to intercept JSY VOR R265 to SHARK then to JW NDB.

JERSEY 3J
Arrival via G4 to CAN VOR continue on CAN VOR R263 to SENLO then turn right onto 272°M to BEVAV then turn right onto 277°M to OYSTA then turn right to intercept JSY VOR R265 to SHARK then to JW NDB.

GENERAL INFORMATION
1 Callsign of Controlling Authority 'Jersey Zone'.
2 Outside the operating hours of Guernsey ATC, GUR VOR is unmonitored.

TRANSITION ALTITUDE	3000
TRANSITION LEVEL	ATC
AREA MNM ALT (x100)	29

CHANGE: AMA ADDED. FIXES. MAG VAR.

AERO INFO DATE 23 DEC 09