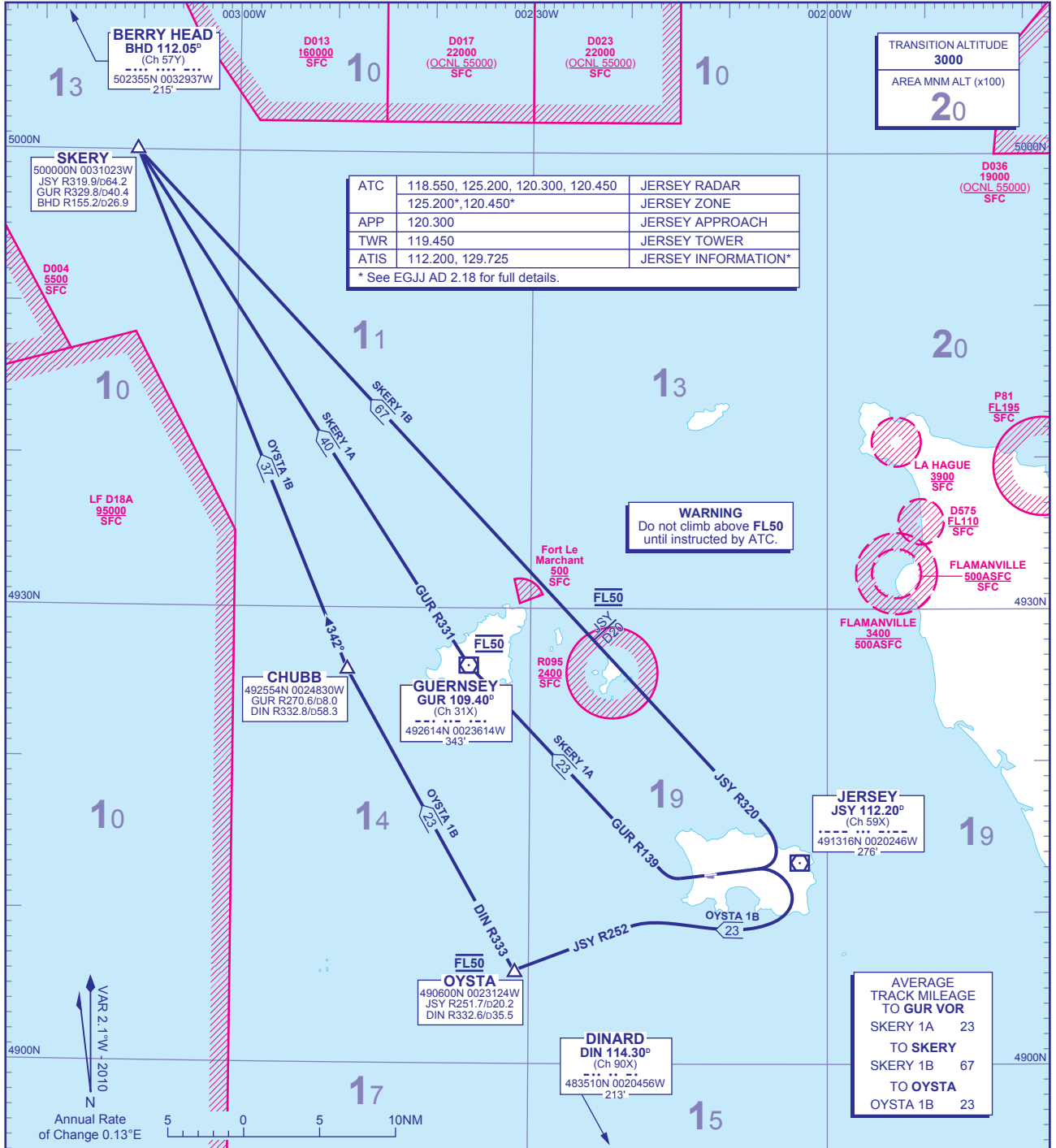


STANDARD DEPARTURE CHART - INSTRUMENT (SID) - ICAO

DISTANCES IN NAUTICAL MILES
BEARINGS, TRACKS AND RADIALS ARE MAGNETIC
ALTITUDES AND ELEVATIONS ARE IN FEET

JERSEY SKERY/OYSTA



SKERY 1A RWY 27	Turn right onto GUR VOR R139 to GUR VOR , crossings GUR VOR at FL50 . At GUR VOR turn right onto GUR VOR R330 to SKERY .	N862.
SKERY 1B RWY 09	Turn left to intercept and follow JSY VOR R320 to SKERY . Crossing JSY VOR R320 at FL50 .	N862.
OYSTA 1B RWY 09	Turn right to intercept and follow JSY VOR R252 to OYSTA , crossing OYSTA at FL50 . At OYSTA turn right onto DIN VOR R333 to CHUBB . At CHUBB turn right onto track 342°M to SKERY .	N862.

- GENERAL INFORMATION**
- SIDs reflect Noise Preferential Routeings. See EGJJ AD 2.21 for Noise Abatement Procedures.
 - NOISE PREFERENTIAL ROUTEINGS**
PROPELLER DRIVEN AIRCRAFT: RWY 27. Climb to 500' QFE (777' QNH) before turning. Avoid overflying land below 1000' QFE.
RWY 09. Climb to 500' QFE (777' QNH) before turning. Climb at maximum rate to not less than 1000' QFE.
 - TURBO-JET AIRCRAFT: RWY 27/09. Straight ahead to a minimum of 1500' QFE (1777' QNH) before turning.
 - No turns below 500' QFE (777' QNH).
 - Call sign for RTF frequency used when instructed after take-off 'Jersey Zone'. Report call sign, SID Designator, current level and cleared level on first contact with 'Jersey Zone'.
 - En-route cruising levels will be allocated after take-off by 'Jersey Zone'. **Do not climb above SID level until cleared by ATC.**
 - SKERY SIDs: Allocated cruising level to be achieved by SKERY.
 - Outside the operating hours of Guernsey ATC, GUR VOR is unmonitored.

CHANGE: AMA ADDED. BEARINGS/FIXES. MAG VAR.
AERO INFO DATE 23 DEC 09