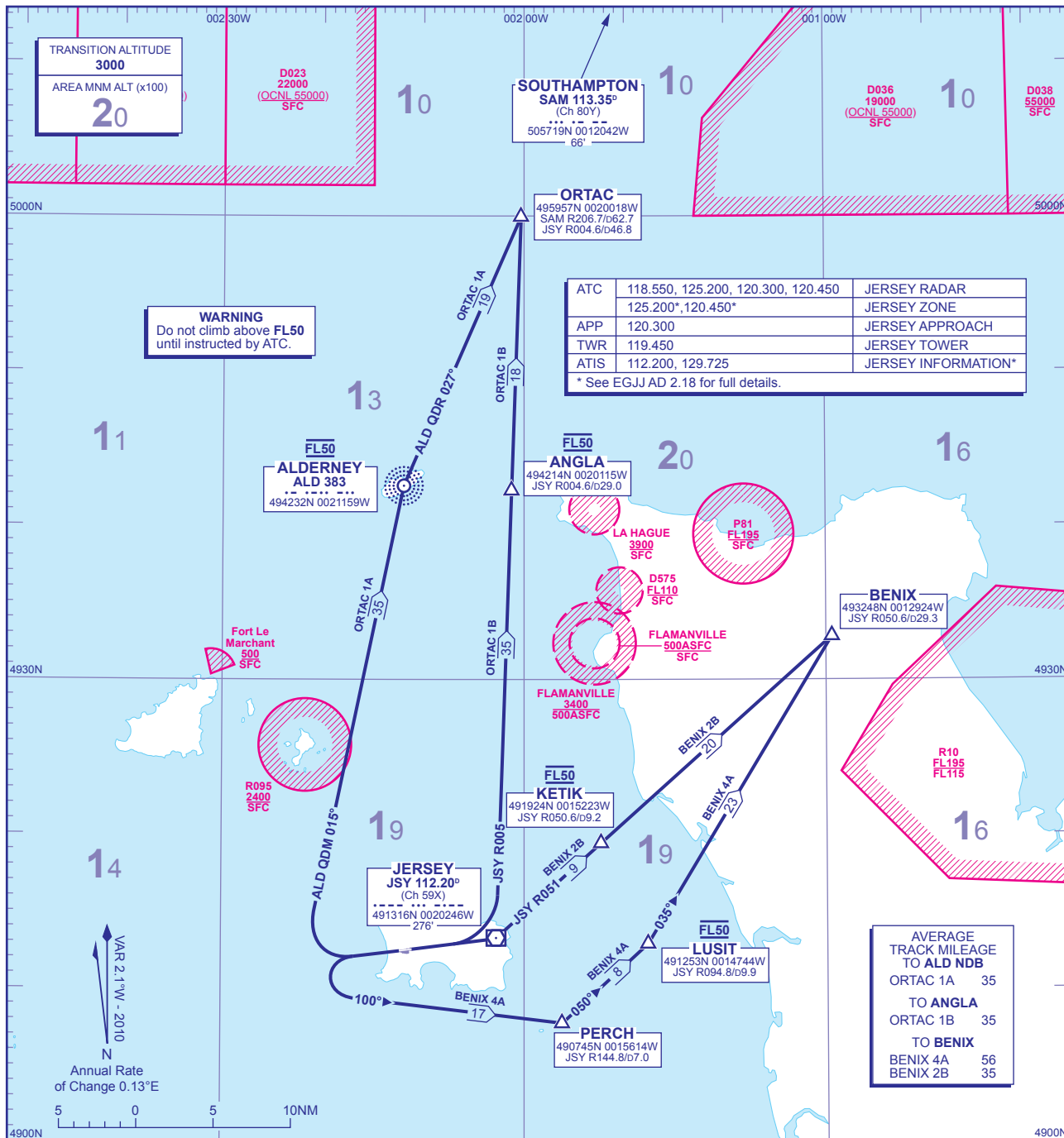


STANDARD DEPARTURE CHART - INSTRUMENT (SID) - ICAO

DISTANCES IN NAUTICAL MILES
BEARINGS, TRACKS AND RADIALS ARE MAGNETIC
ALTITUDES AND ELEVATIONS ARE IN FEET

JERSEY ORTAC/BENIX



ATC	118.550, 125.200, 120.300, 120.450	JERSEY RADAR
	125.200*, 120.450*	JERSEY ZONE
APP	120.300	JERSEY APPROACH
TWR	119.450	JERSEY TOWER
ATIS	112.200, 129.725	JERSEY INFORMATION*

* See EGJJ AD 2.18 for full details.

AVERAGE TRACK MILEAGE TO ALD NDB	
ORTAC 1A	35
ORTAC 1B	35
TO BENIX	
BENIX 4A	56
BENIX 2B	35

ORTAC 1A RWY 27	Turn right onto ALD NDB QDM 015° to ALD NDB , crossings ALD NDB at FL50 . Then turn right onto ALD NDB QDR 027° to ORTAC .	Q41, R84, L980.
ORTAC 1B RWY 09	Turn left to intercept and follow JSY VOR R005 to ANGLA , crossing ANGLA at FL50 , then on to ORTAC .	Q41, R84, L980.
BENIX 4A RWY 27	Turn left onto track 100°M to PERCH . At PERCH turn left onto track 050°M to LUSIT , crossing LUSIT at FL50 , then turn left onto 035°M to BENIX .	G27, N867.
BENIX 2B RWY 09	Climb straight ahead to JSY VOR . At JSY VOR turn left onto JSY VOR R051 to BENIX . Cross KETIK at FL50 .	G27, N867.

GENERAL INFORMATION

- SIDs reflect Noise Preferential Routeings. See EGJJ AD 2.21 for Noise Abatement Procedures.
- NOISE PREFERENTIAL ROUTINGS:**
 PROPELLER DRIVEN AIRCRAFT: RWY 27. Climb to 500' QFE (777' QNH) before turning. Avoid overflying land below 1000' QFE.
 RWY 09. Climb to 500' QFE (777' QNH) before turning. Climb at maximum rate to not less than 1000' QFE.
 TURBO-JET AIRCRAFT: RWY 27/09. Straight ahead to a minimum of 1500' QFE (1777' QNH) before turning.
- No turns below 500' QFE (777' QNH).
- Callsign for RTF frequency used when instructed after take-off 'Jersey Zone'. Report callsign, SID Designator, current level and cleared level on first contact with 'Jersey Zone'.
- En-route cruising levels will be allocated after take-off by 'Jersey Zone'. **Do not climb above SID level until cleared by ATC.**
- ORTAC SIDs: Allocated cruising level to be achieved by OTRAC.

CHANGE: AMA ADDED. MAG VAR. AIRWAY R41 REDESIGNATED Q41.

AERO INFO DATE 23 DEC 09