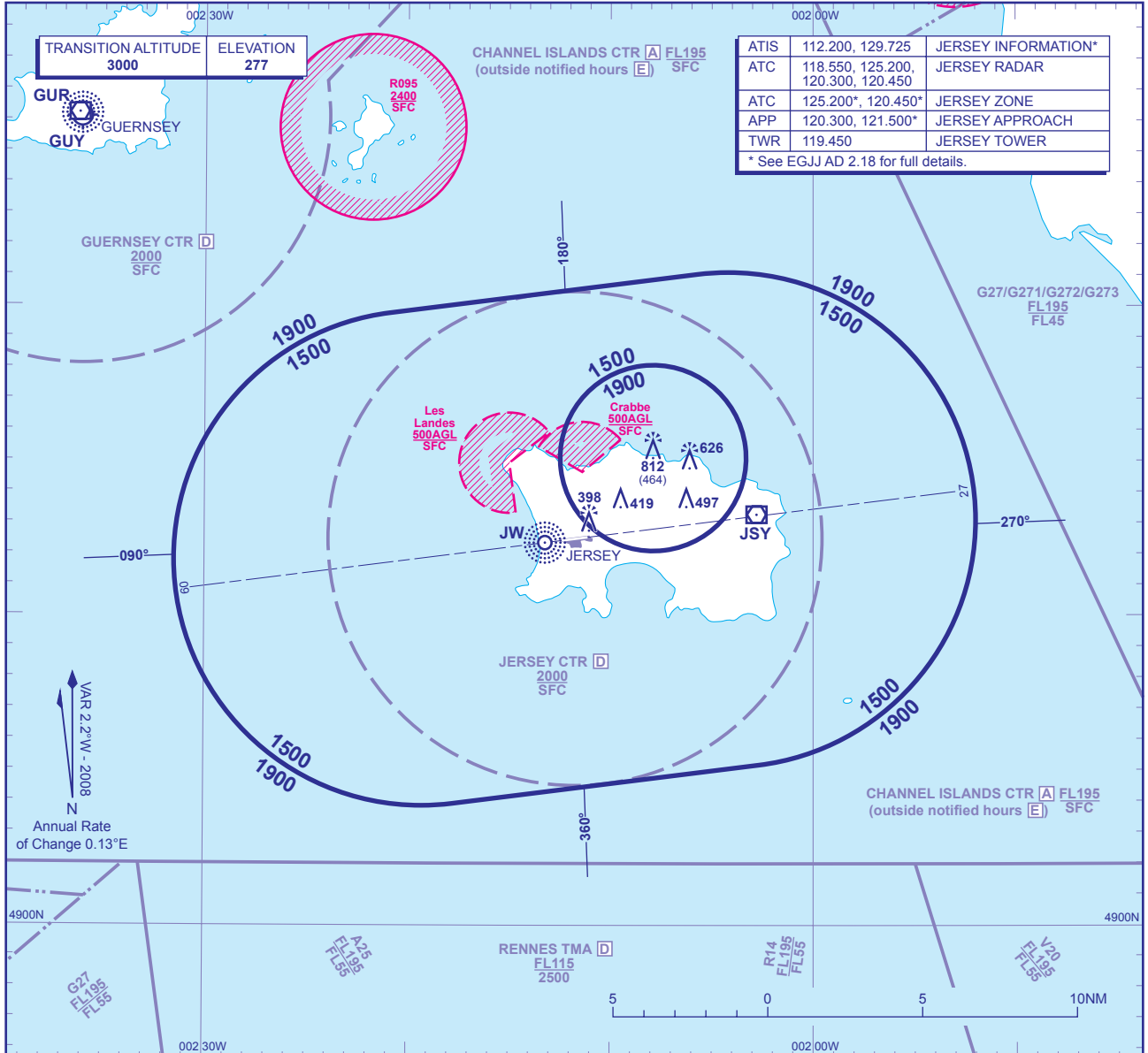


ATC SURVEILLANCE MINIMUM ALTITUDE CHART - ICAO

BEARINGS, TRACKS AND RADIALS ARE MAGNETIC
ELEVATIONS IN FEET AMSL **812**
HEIGHTS IN FEET AGL (464)

JERSEY



MINIMUM INITIAL ALTITUDE

Within the ATC Surveillance Minimum Altitude area the minimum initial altitude to be allocated by the approach surveillance controller is:
a) **1500** in the sector defined by the lateral limits; 491946N 0022052W - 492102N 0020541W thence clockwise by an arc of a circle radius 8NM centred on 491306N 0020410W to 490510N 0020239W - 490355N 0021745W thence clockwise by an arc of a circle radius 8NM centred on 491151N 0021918W to 491946N 0022052W, except;
a) **1900** in the sector defined by the lateral limits; by an arc of a circle radius 3NM centred on 491506N 0020752W.

OUTSIDE THE DESIGNATED ATC SURVEILLANCE MINIMUM ALTITUDE AREA

The minimum altitude to be allocated by the approach surveillance controller will be either the Minimum Sector Altitude, or **1000** above any fixed obstacles:
a) within 5NM of the aircraft*, or
b) within the sector 15NM ahead of and within 20° either side of the aircraft's track*.
*When the aircraft is within 15NM of the radar antennae, the 5NM in a) and the 15NM in b) may be reduced to 3NM and 10NM respectively.

LOSS OF COMMUNICATION PROCEDURES

Initial Approach

Continue visually or by means of an appropriate approved final approach aid. If not possible proceed at **2000**, or last assigned level if higher to **JW NDB(L)** for RWY 09 approaches or **VOR JSY** for RWY 27 approaches†.

Intermediate and Final Approach

Continue visually or by means of an appropriate final approach aid. If not possible follow the Missed Approach Procedure to **JW NDB(L)** for RWY 09 approaches or **VOR JSY** for RWY 27 approaches†.

† In all cases where the aircraft returns to the holding facility the procedure to be adopted is the Basic Radio Failure Procedure detailed at ENR 1.1.3.

GENERAL INFORMATION

1. Levels shown are based on QNH.
2. Only significant obstacles and dominant spot heights are shown.
3. The minimum levels shown within the ATC Surveillance Minimum Altitude area ensure terrain clearance in conformity with Rule 29 of the Rules of the Air (Jersey) Regulations in respect of obstacles within the ATCSMA area.
4. Minimum Sector Altitudes are based on obstacles and spot heights within 25NM of the Aerodrome Reference Point.
5. Controlled airspace with a base in excess of **5000** or FL55, as appropriate, is not shown.
6. The ATC Surveillance service is provided by Primary and/or Secondary Radar equipment.
7. **This chart should only be used for the cross-checking of assigned altitudes whilst in receipt of an ATC Surveillance service.**

CHANGE: TITLE. NOTE 3. NEW CHART DESIGN.

AERO INFO DATE 28 NOV 08

INTENTIONALLY BLANK