

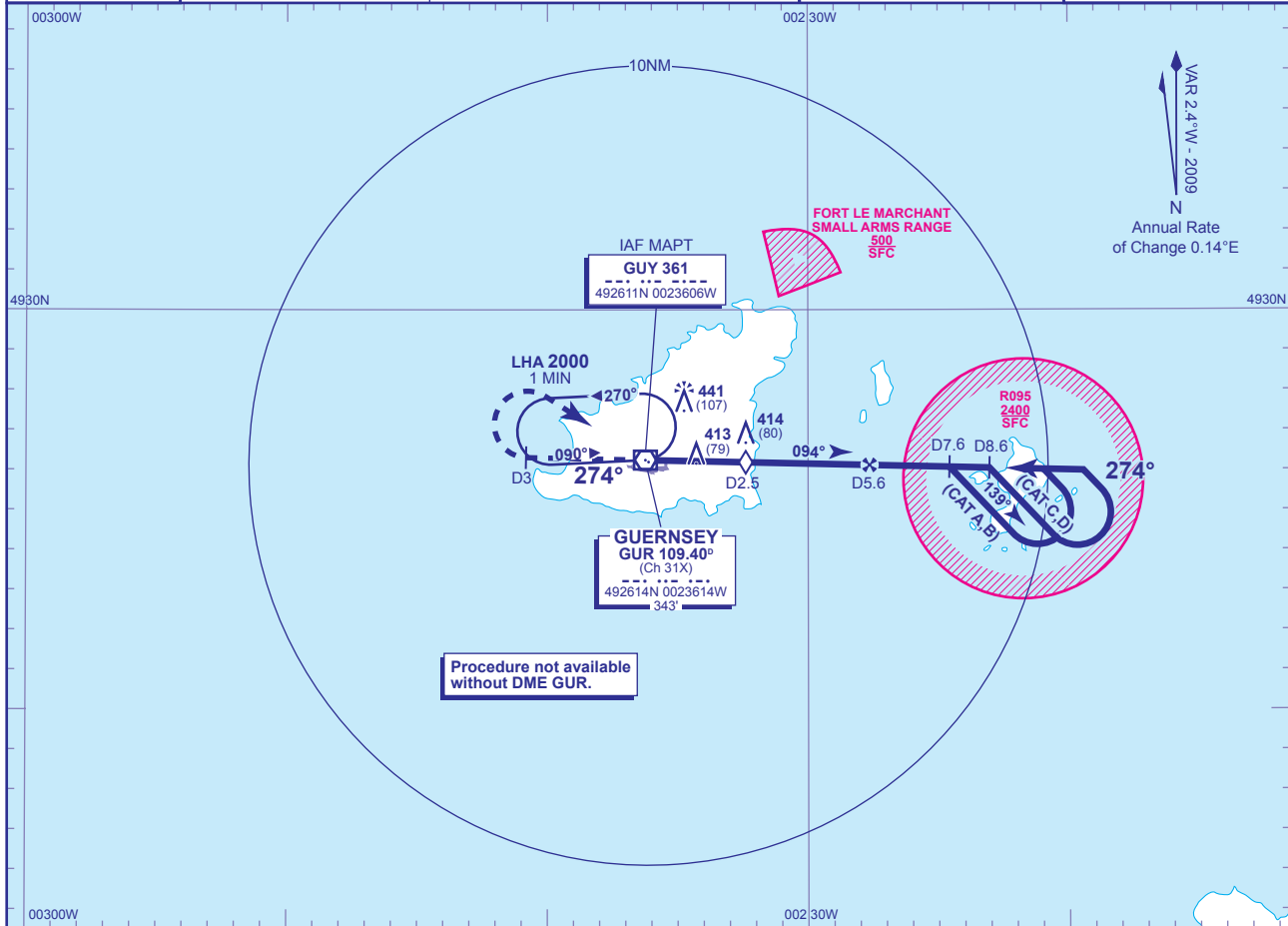
INSTRUMENT APPROACH CHART - ICAO

**GUERNSEY NDB(L) RWY 27**  
(ACFT CAT A,B,C,D)



APP	128.650, 121.500*	GUERNSEY APPROACH (*Emergency)	AD ELEVATION	336
TWR	119.950	GUERNSEY TOWER	THR ELEVATION	334
GMC	121.800	GUERNSEY GROUND	OBSTACLE ELEVATION	441 AMSL (107) (ABOVE THR)
RAD	118.900, 124.500	GUERNSEY RADAR	BEARINGS ARE MAGNETIC	
ATIS	109.400	GUERNSEY INFORMATION		

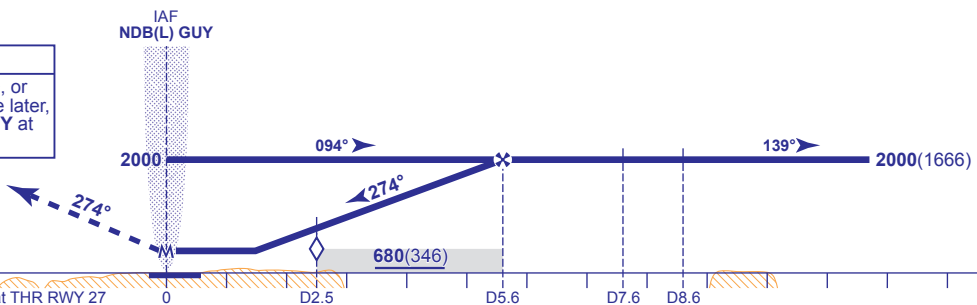
TRANSITION ALTITUDE  
**3000**



RECOMMENDED PROFILE Gradient 5.2%, 320FT/NM

NM	5	4	3	2.5 (SDF)	2
ALT(HGT)	1810(1476)	1490(1156)	1170(836)	1010(676)	850(516)

**MAPt NDB(L) GUY**  
Climb straight ahead to 2000, or GUR DME 3 whichever is the later, then turn right to NDB(L) GUY at 2000, or as directed.



Aircraft Category	A	B	C	D	Rate of descent	G/S KT				
						160	140	120	100	80
OCA (OCH)	WITH DME	660(326)	660(326)	660(326)	660(326)	840	740	630	530	420
	NO DME	730(396)	730(396)	730(396)	730(396)					
VM(C)OCA (OCH AAL)	Total Area	750(414)	750(414)	850(514)	850(514)					

**AIRCRAFT UNABLE TO RECEIVE DME**  
As for main procedure with DME except fly outbound for 2.5 MIN (CAT A,B); 2 MIN (CAT C,D) prior to procedure turn right to establish on FAT. When established, descend to MDH.

- NOTE 1** FAT offset 4° south from RWY 27 C/L.  
**NOTE 2** Authority to penetrate restricted area R095 will be granted by Guernsey ATC prior to start of this procedure.

CHANGE: MAG VAR. COM. MOC BOX. SDF.

AERO INFO DATE 19 AUG 09