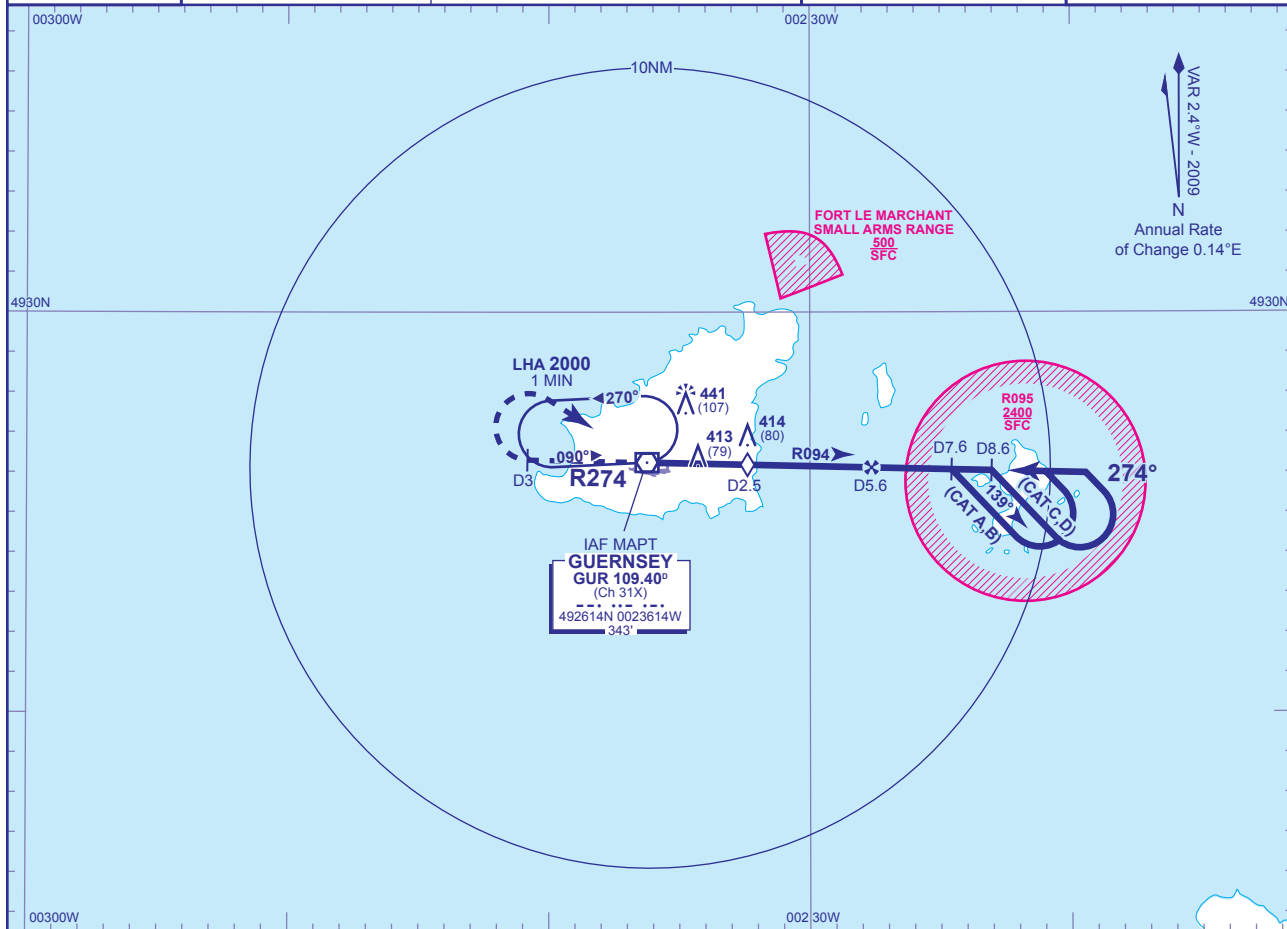


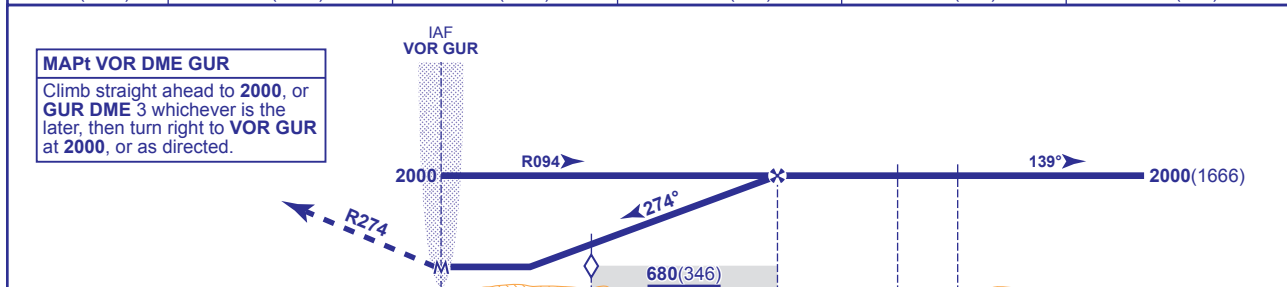
INSTRUMENT APPROACH CHART - ICAO

GUERNSEY VOR/DME RWY 27
(ACFT CAT A,B,C,D)

<p>MSA 25NM VOR GUR</p>	APP 128.650, 121.500*	GUERNSEY APPROACH (*Emergency)	AD ELEVATION 336
	TWR 119.950	GUERNSEY TOWER	THR ELEVATION 334
	GMC 121.800	GUERNSEY GROUND	OBSTACLE ELEVATION 441 AMSL (107) (ABOVE THR)
	RAD 118.900, 124.500	GUERNSEY RADAR	TRANSITION ALTITUDE 3000
	ATIS 109.400	GUERNSEY INFORMATION	BEARINGS ARE MAGNETIC



RECOMMENDED PROFILE Gradient 5.2%, 320FT/NM					
DME GUR	5	4	3	2.5 (SDF)	2
ALT(HGT)	1810(1476)	1490(1156)	1170(836)	1010(676)	850(516)



DME GUR reads 0.5NM at THR RWY 27											
Aircraft Category	A	B	C	D	Rate of descent	G/S KT	160	140	120	100	80
OCA (OCH)	WITH DME	660(326)	660(326)	660(326)		660(326)	FT/MIN	840	740	630	530
VM(C)OCA (OCH AAL)	NO DME	730(396)	730(396)	730(396)	730(396)	Total Area	750(414)	750(414)	850(514)	850(514)	

AIRCRAFT UNABLE TO RECEIVE DME
As for main procedure with DME except fly outbound for 2.5 MIN (CAT A,B); 2 MIN (CAT C,D) prior to procedure turn right to establish on FAT. When established, descend to MDH.

NOTE 1 FAT offset 4° south from RWY 27 C/L.
NOTE 2 Authority to penetrate restricted area R095 will be granted by Guernsey ATC prior to start of this procedure.

CHANGE: MAG VAR. COM. MOC BOX. SDF.