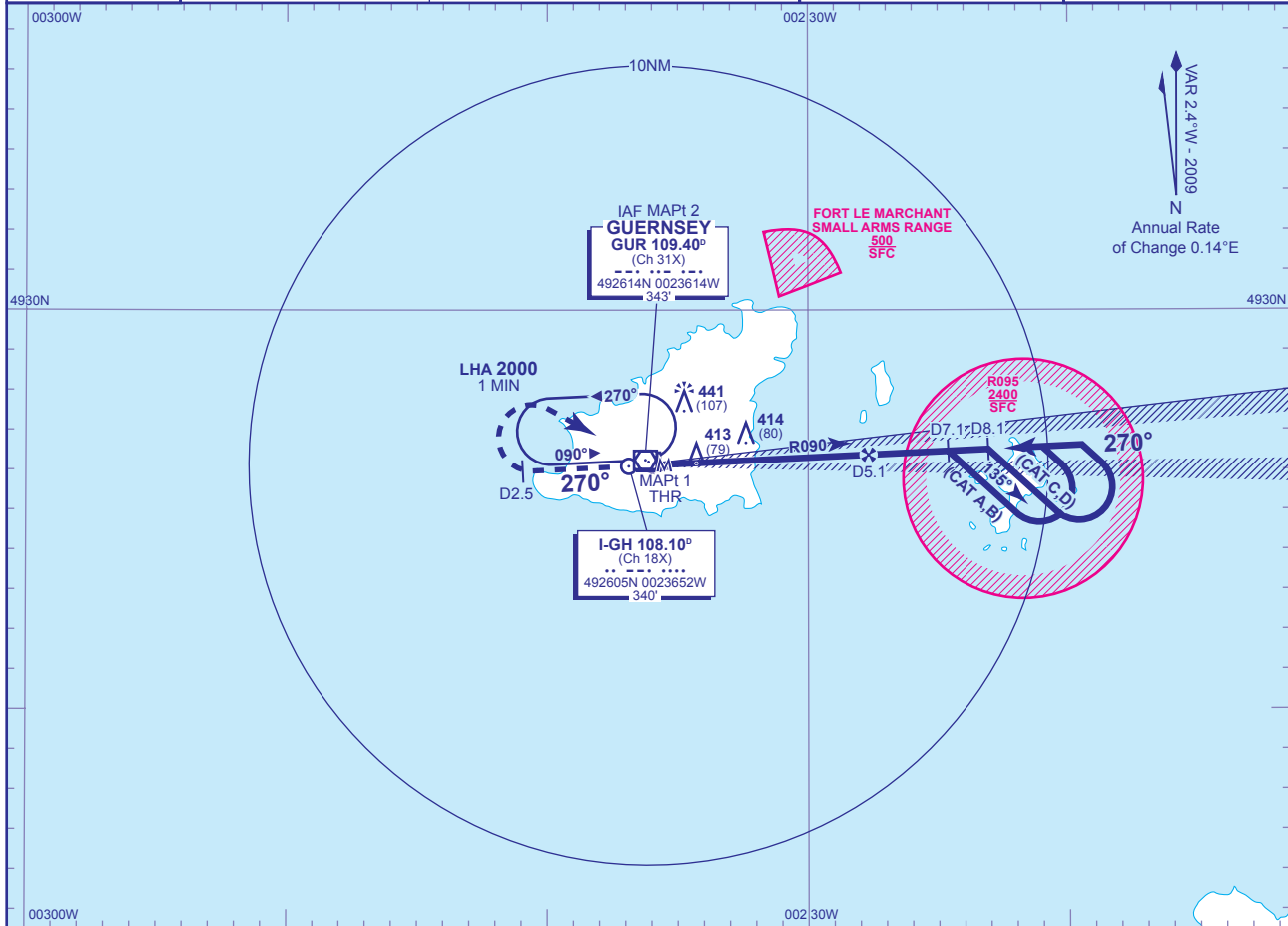


INSTRUMENT APPROACH CHART - ICAO

**GUERNSEY
LOC/DME/VOR
RWY 27**
(ACFT CAT A,B,C,D)

<p>MSA 25NM VOR GUR</p>	APP 128.650, 121.500*	GUERNSEY APPROACH (*Emergency)	AD ELEVATION 336
	TWR 119.950	GUERNSEY TOWER	THR ELEVATION 334
	GMC 121.800	GUERNSEY GROUND	OBSTACLE ELEVATION 441 AMSL (107) (ABOVE THR)
	RAD 118.900, 124.500	GUERNSEY RADAR	BEARINGS ARE MAGNETIC
	ATIS 109.400	GUERNSEY INFORMATION	TRANSITION ALTITUDE 3000

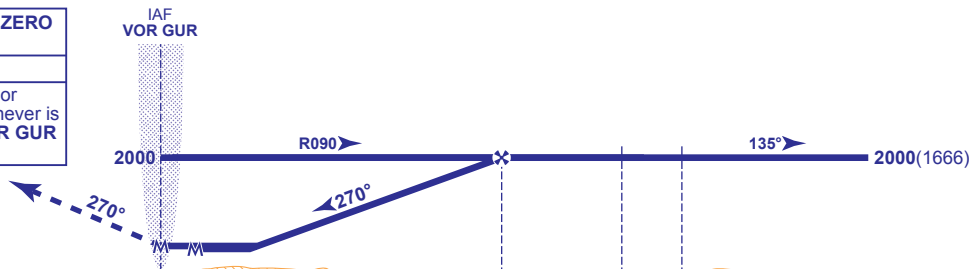


RECOMMENDED PROFILE Gradient 5.2%, 320FT/NM

DME I-GH	5	4	3	2
ALT(HGT)	1970(1636)	1650(1316)	1330(996)	1020(686)

MAPt WITH DME I-GH DME ZERO
(THR RWY 27)

MAPt NO DME VOR GUR
Climb straight ahead to **2000**, or **I-GH DME 2.5** outbound whichever is the later, then turn right to **VOR GUR** at **2000**, or as directed.



DME I-GH zero ranged to THR RWY 27

Aircraft Category		A	B	C	D	Rate of descent	G/S KT				
		WITH DME	NO DME	WITH DME	NO DME		WITH DME	NO DME	WITH DME	NO DME	WITH DME
OCA (OCH)	WITH DME	660(326)	660(326)	660(326)	660(326)		160	140	120	100	80
	NO DME	710(376)	710(376)	710(376)	710(376)		850	740	640	530	420
VM(C)OCA (OCH AAL)	Total Area	750(414)	750(414)	850(514)	850(514)						

AIRCRAFT UNABLE TO RECEIVE DME
As for main procedure with DME except fly outbound for 2.5 MIN (CAT A,B); 2 MIN (CAT C,D) prior to procedure turn right to establish on LOC. When established, descend to MDH.

NOTE Authority to penetrate restricted area R095 will be granted by Guernsey ATC prior to start of this procedure.

CHANGE: MAG VAR. COM.

AERO INFO DATE 19 AUG 09