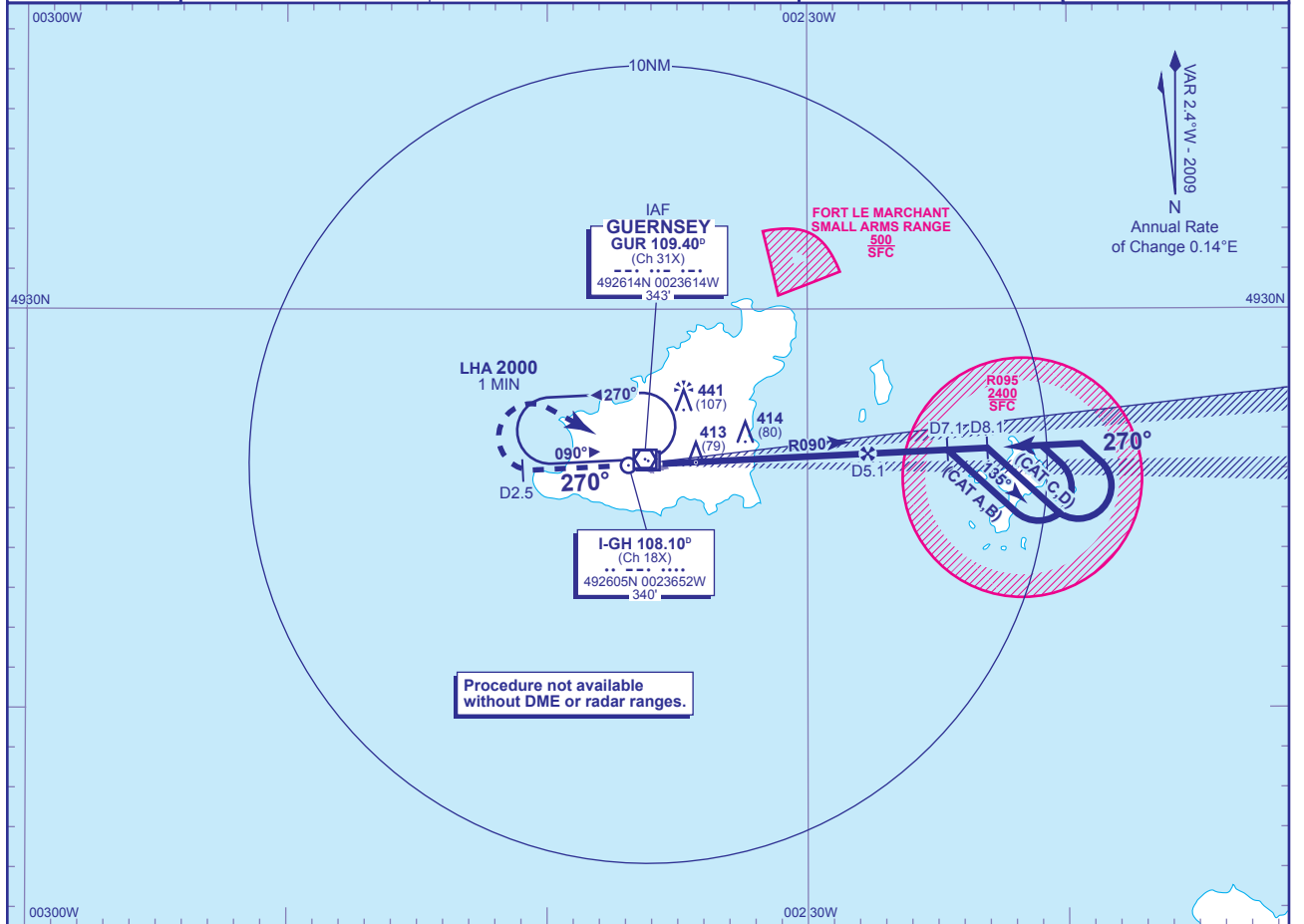


INSTRUMENT APPROACH CHART - ICAO

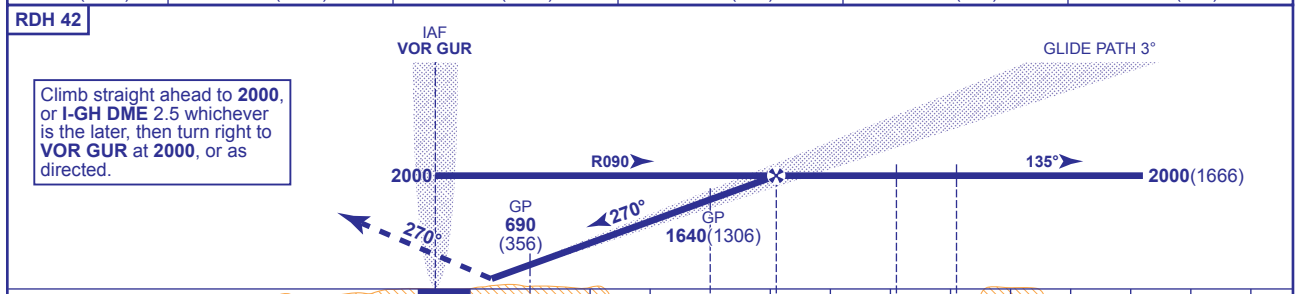
**GUERNSEY
ILS/DME/VOR
RWY 27**
(ACFT CAT A,B,C,D)

<p>MSA 25NM VOR GUR</p>	APP 128.650, 121.500*	GUERNSEY APPROACH (*Emergency)	AD ELEVATION 336
	TWR 119.950	GUERNSEY TOWER	THR ELEVATION 334
	GMC 121.800	GUERNSEY GROUND	OBSTACLE ELEVATION 441 AMSL (107) (ABOVE THR)
	RAD 118.900, 124.500	GUERNSEY RADAR	TRANSITION ALTITUDE 3000
	ATIS 109.400	GUERNSEY INFORMATION	BEARINGS ARE MAGNETIC



RECOMMENDED PROFILE GLIDE PATH 3°, 320FT/NM

DME I-GH	5	4	3	2	1
ALT(HGT)	1960(1626)	1640(1306)	1320(986)	1010(676)	690(356)



Aircraft Category	A	B	C	D	Rate of descent	G/S KT	160	140	120	100	80
OCA (OCH) CAT I	475(141)	485(151)	497(163)	509(175)	FT/MIN	850	740	640	530	420	
VM(C)OCA (OCH AAL) Total Area	750(414)	750(414)	850(514)	850(514)							

AIRCRAFT UNABLE TO RECEIVE DME
 Inform ATC. Radar ranges will be passed at 7.1NM (CAT A,B); 8.1NM (CAT C,D) outbound, 5.1NM inbound and 2.5NM outbound during missed approach procedure.

NOTE Authority to penetrate restricted area R095 will be granted by Guernsey ATC prior to start of this procedure.

CHANGE: MAG VAR. COM.

AERO INFO DATE 19 AUG 09