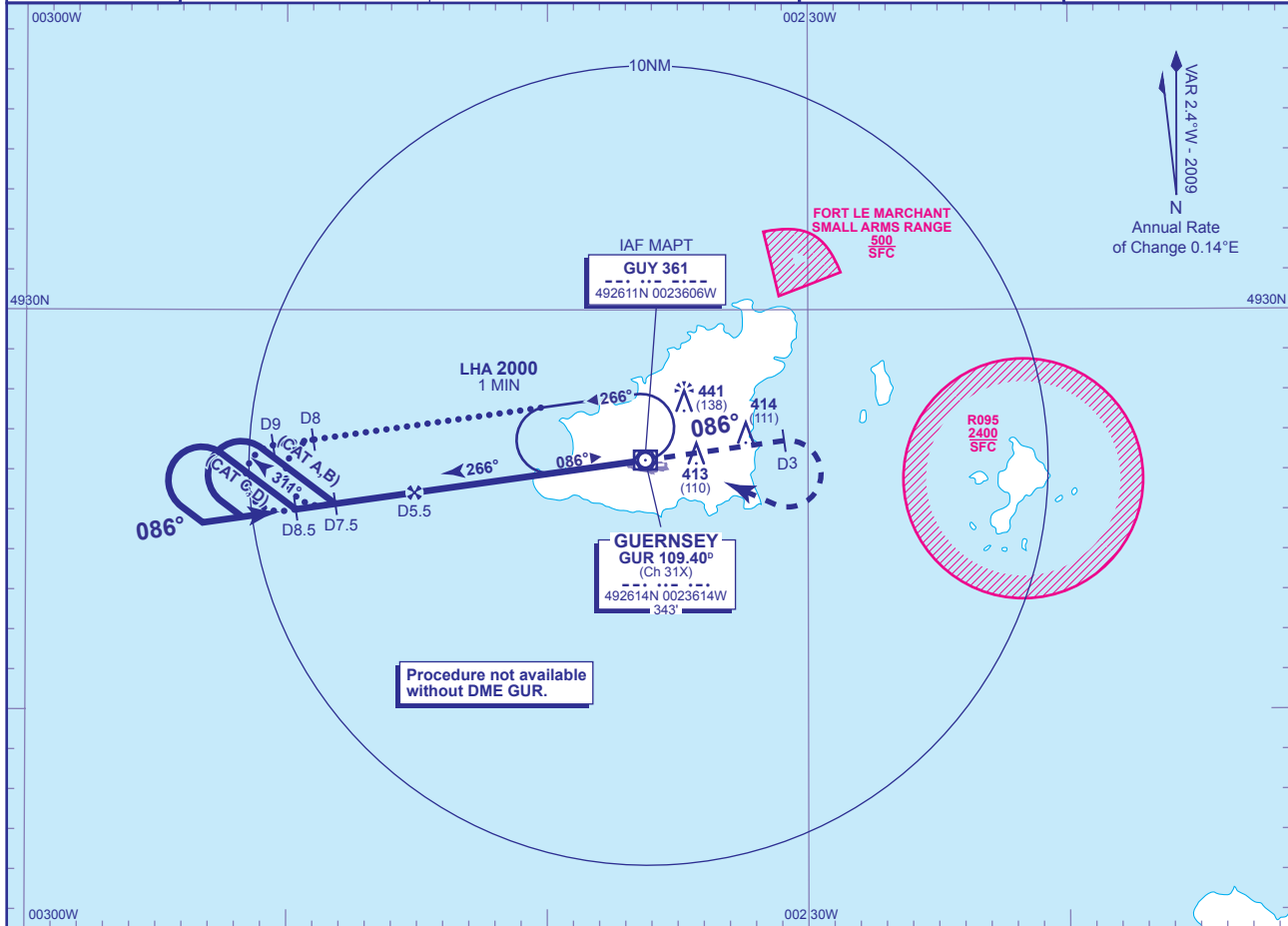


INSTRUMENT APPROACH CHART - ICAO

GUERNSEY NDB(L) RWY 09
(ACFT CAT A,B,C,D)

TRANSITION ALTITUDE
3000

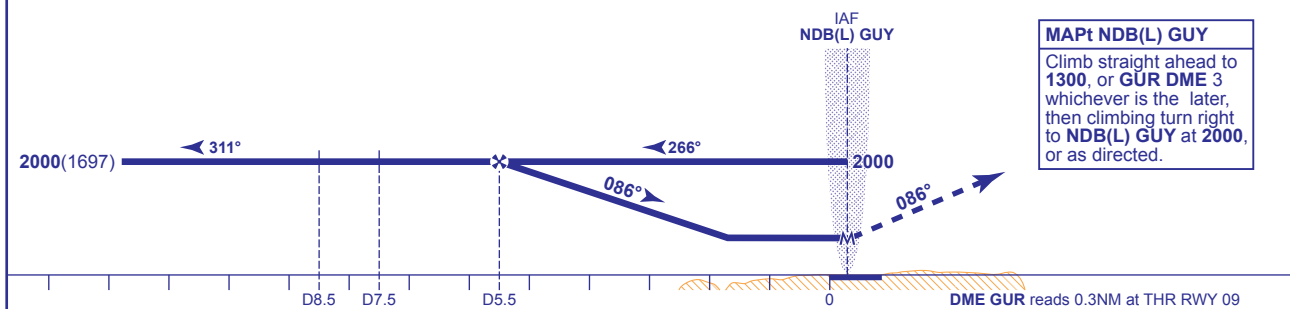
<p>MSA 25NM NDB(L) GUY</p>	APP 128.650, 121.500*	GUERNSEY APPROACH (*Emergency)	AD ELEVATION 336
	TWR 119.950	GUERNSEY TOWER	THR ELEVATION 303
	GMC 121.800	GUERNSEY GROUND	OBSTACLE ELEVATION 441 AMSL (138) (ABOVE THR)
	RAD 118.900, 124.500	GUERNSEY RADAR	BEARINGS ARE MAGNETIC
	ATIS 109.400	GUERNSEY INFORMATION	



Procedure not available without DME GUR.

RECOMMENDED PROFILE Gradient 5.2%, 320FT/NM

DME GUR	5	4	3	2
ALT(HGT)	1840(1537)	1520(1217)	1200(897)	880(577)



MAPt NDB(L) GUY
Climb straight ahead to **1300**, or **GUR DME 3** whichever is the later, then climbing turn right to **NDB(L) GUY** at **2000**, or as directed.

Aircraft Category	A	B	C	D	Rate of descent	G/S KT	160	140	120	100	80
OCA (OCH)	WITH DME	660(357)	660(357)	660(357)	660(357)	FT/MIN	850	740	640	540	430
	NO DME	710(407)	710(407)	710(407)	710(407)						
VM(C)OCA (OCH AAL)	Total Area	750(414)	750(414)	850(514)	850(514)						

ALTERNATIVE PROCEDURE EXTENDED HOLDING PATTERN
Extend the outbound leg of the VOR GUR holding pattern to GUR DME 8 (CAT A,B); GUR DME 9 (CAT C,D) then turn left to establish on FAT. When established, descend from the FAF GUR DME 5.5 to MDH.

AIRCRAFT UNABLE TO RECEIVE DME
BASIC PROCEDURE: As for main procedure with DME except fly outbound for 2.5 MIN (CAT A,B); 2 MIN (CAT C,D) prior to procedure turn right to establish on the FAT, then descend to MDH.
ALTERNATIVE PROCEDURE: As for main procedure with DME except fly outbound leg of racetrack for 3 MIN (CAT A,B); 2.5 MIN (CAT C,D). When established inbound, descend to MDH.

NOTE FAT is offset 4° south from RWY 09 C/L.

CHANGE: MAG VAR. COM. MOC BOX REMOVED.

AERO INFO DATE 19 AUG 09