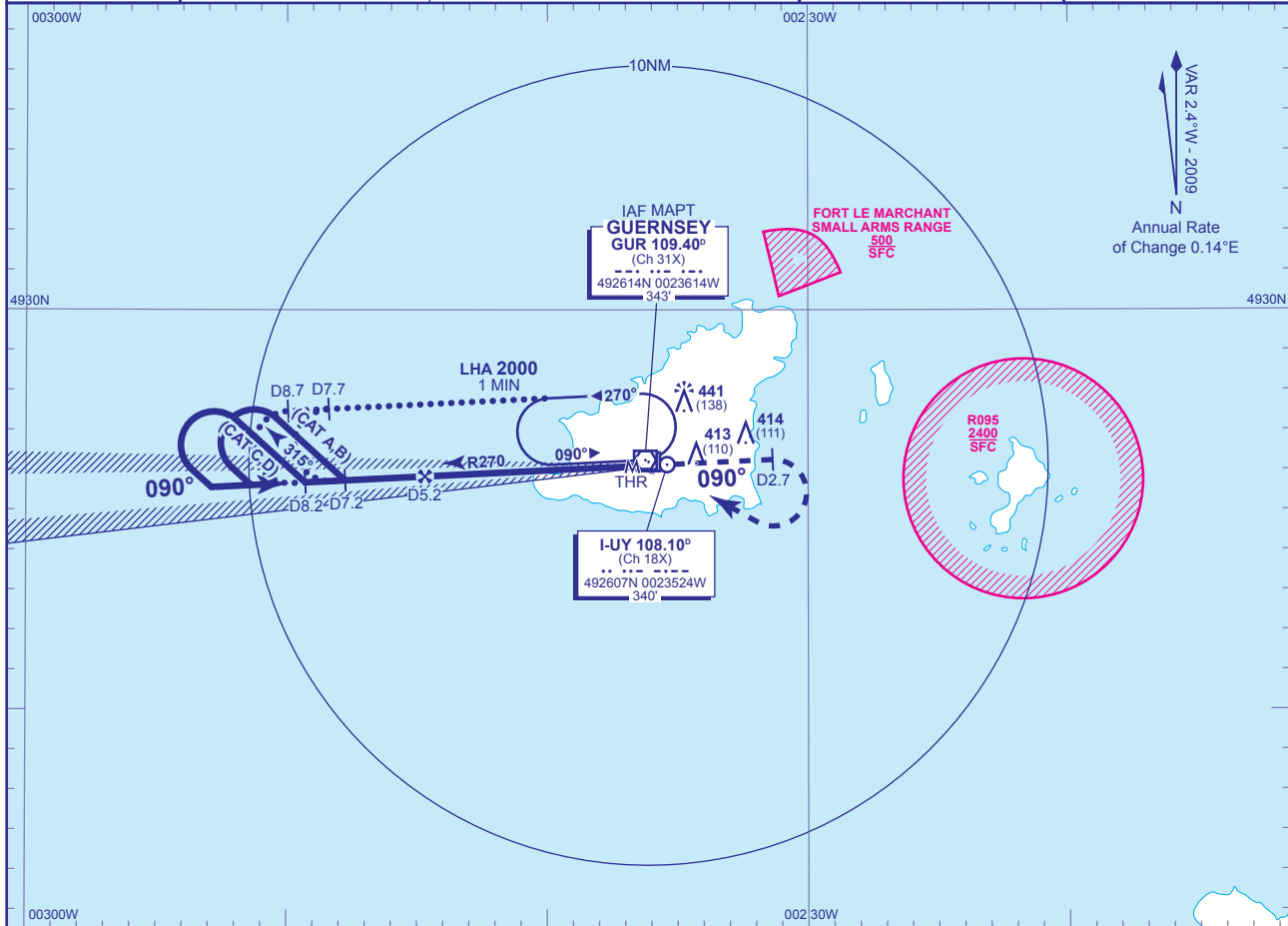


INSTRUMENT APPROACH CHART - ICAO

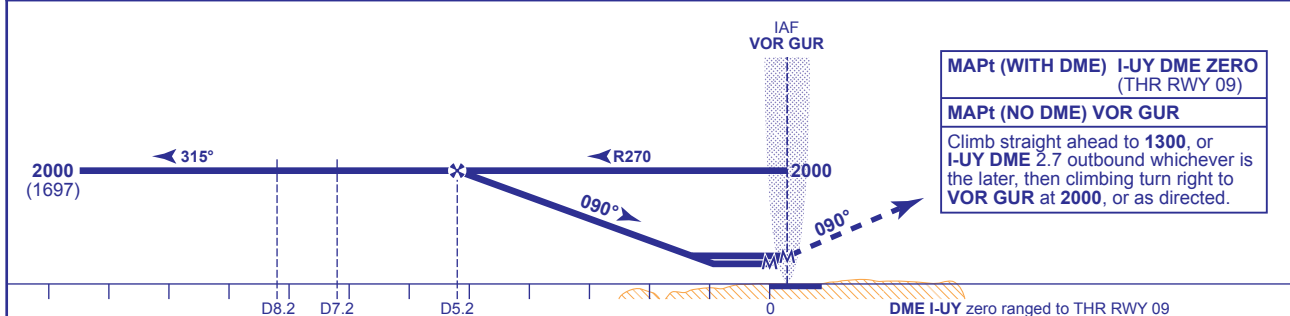
**GUERNSEY
LOC/DME/VOR
RWY 09**
(ACFT CAT A,B,C,D)

<p>MSA 25NM VOR GUR</p>	APP 128.650, 121.500*	GUERNSEY APPROACH (*Emergency)	AD ELEVATION 336
	TWR 119.950	GUERNSEY TOWER	THR ELEVATION 303
	GMC 121.800	GUERNSEY GROUND	OBSTACLE ELEVATION 441 AMSL (138) (ABOVE THR)
	RAD 118.900, 124.500	GUERNSEY RADAR	BEARINGS ARE MAGNETIC
	ATIS 109.400	GUERNSEY INFORMATION	TRANSITION ALTITUDE 3000



RECOMMENDED PROFILE Gradient 5.2%, 320FT/NM

DME I-UY	5	4	3	2
ALT(HGT)	1940(1637)	1620(1317)	1300(997)	990(687)



Aircraft Category		A	B	C	D	Rate of descent	DME I-UY zero ranged to THR RWY 09					
		G/S KT	160	140	120		100	80				
OCA (OCH)	WITH DME	630(327)	630(327)	630(327)	630(327)		FT/MIN	850	740	640	530	420
	NO DME	680(377)	680(377)	680(377)	680(377)							
VM(C)OCA (OCH AAL)	Total Area	750(414)	750(414)	850(514)	850(514)							

ALTERNATIVE PROCEDURE EXTENDED HOLDING PATTERN
Extend the outbound leg of the VOR GUR holding pattern to I-UY DME 7.7 (CAT A,B); I-UY DME 8.7 (CAT C,D) then turn left to establish on LOC. When established, descend from the FAF I-UY DME 5.2 to MDH.

AIRCRAFT UNABLE TO RECEIVE DME
BASIC PROCEDURE: As for main procedure with DME except fly outbound for 2.5 MIN (CAT A,B); 2 MIN (CAT C,D) prior to procedure turn right to establish on the LOC. When established, descend to MDH.
ALTERNATIVE PROCEDURE: As for main procedure with DME except fly outbound leg of racetrack for 3 MIN (CAT A,B); 2.5 MIN (CAT C,D). When established, descend to MDH.

CHANGE: MAG VAR. COM.

AERO INFO DATE 19 AUG 09