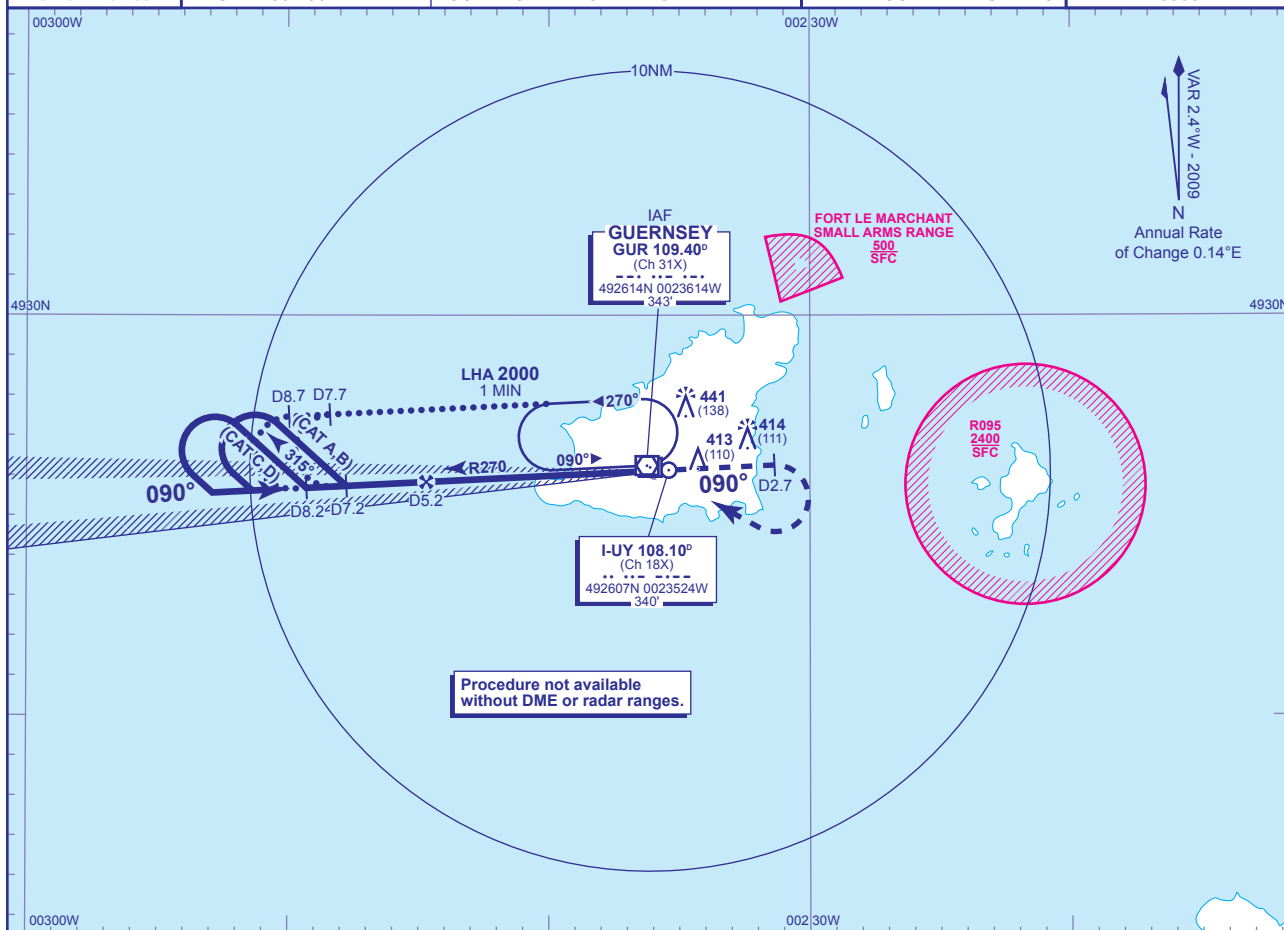


INSTRUMENT APPROACH CHART - ICAO

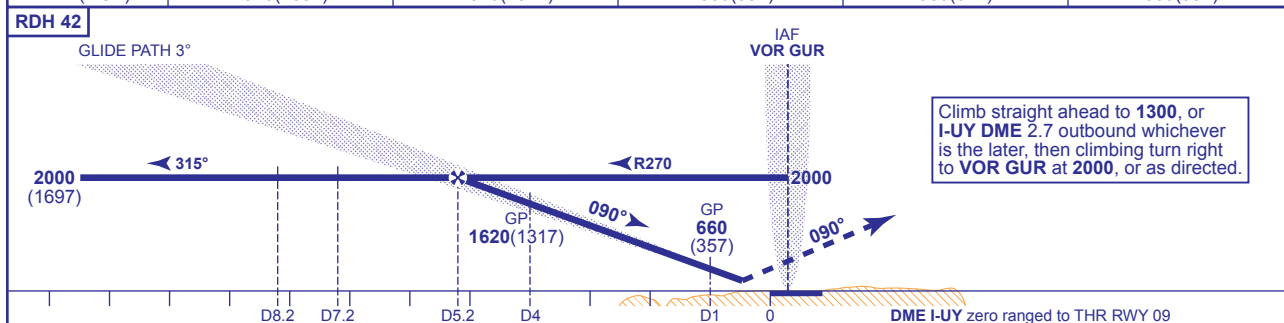
**GUERNSEY
ILS/DME/VOR
RWY 09**
(ACFT CAT A,B,C,D)

<p>MSA 25NM VOR GUR</p>	APP 128.650, 121.500*	GUERNSEY APPROACH (*Emergency)	AD ELEVATION 336
	TWR 119.950	GUERNSEY TOWER	THR ELEVATION 303
	GMC 121.800	GUERNSEY GROUND	OBSTACLE ELEVATION 441 AMSL (138) (ABOVE THR)
	RAD 118.900, 124.500	GUERNSEY RADAR	TRANSITION ALTITUDE 3000
	ATIS 109.400	GUERNSEY INFORMATION	BEARINGS ARE MAGNETIC



RECOMMENDED PROFILE GLIDE PATH 3°, 320FT/NM

DME I-UY	5	4	3	2	1
ALT(HGT)	1940(1637)	1620(1317)	1300(997)	980(677)	660(357)



Aircraft Category	A	B	C	D	Rate of descent	G/S KT	160	140	120	100	80
OCA (OCH)	CAT I	438(135)	446(143)	456(153)	464(161)	FT/MIN	850	740	640	530	420
VM(C)OCA (OCH AAL)	Total Area	750(414)	750(414)	850(514)	850(514)						

ALTERNATIVE PROCEDURE EXTENDED HOLDING PATTERN
Arrival at VOR GUR (IAF) at 2000. Extend the outbound leg of the VOR GUR holding pattern to I-UY DME 7.7 (CAT A,B); I-UY DME 8.7 (CAT C,D) then turn left to establish on LOC. When established, descend on glide path to DH.

AIRCRAFT UNABLE TO RECEIVE DME
BASIC PROCEDURE: Inform ATC. Radar ranges will be passed at 7.2NM (CAT A,B); 8.2NM (CAT C,D) outbound, as appropriate and at 5.2NM inbound and 2.7NM outbound during missed approach procedure.
ALTERNATIVE PROCEDURE: Radar ranges will be passed at 7.7NM (CAT A,B); 8.7NM (CAT C,D) outbound as appropriate then as for basic procedure.

CHANGE: MAG VAR. COM.

AERO INFO DATE 19 AUG 09