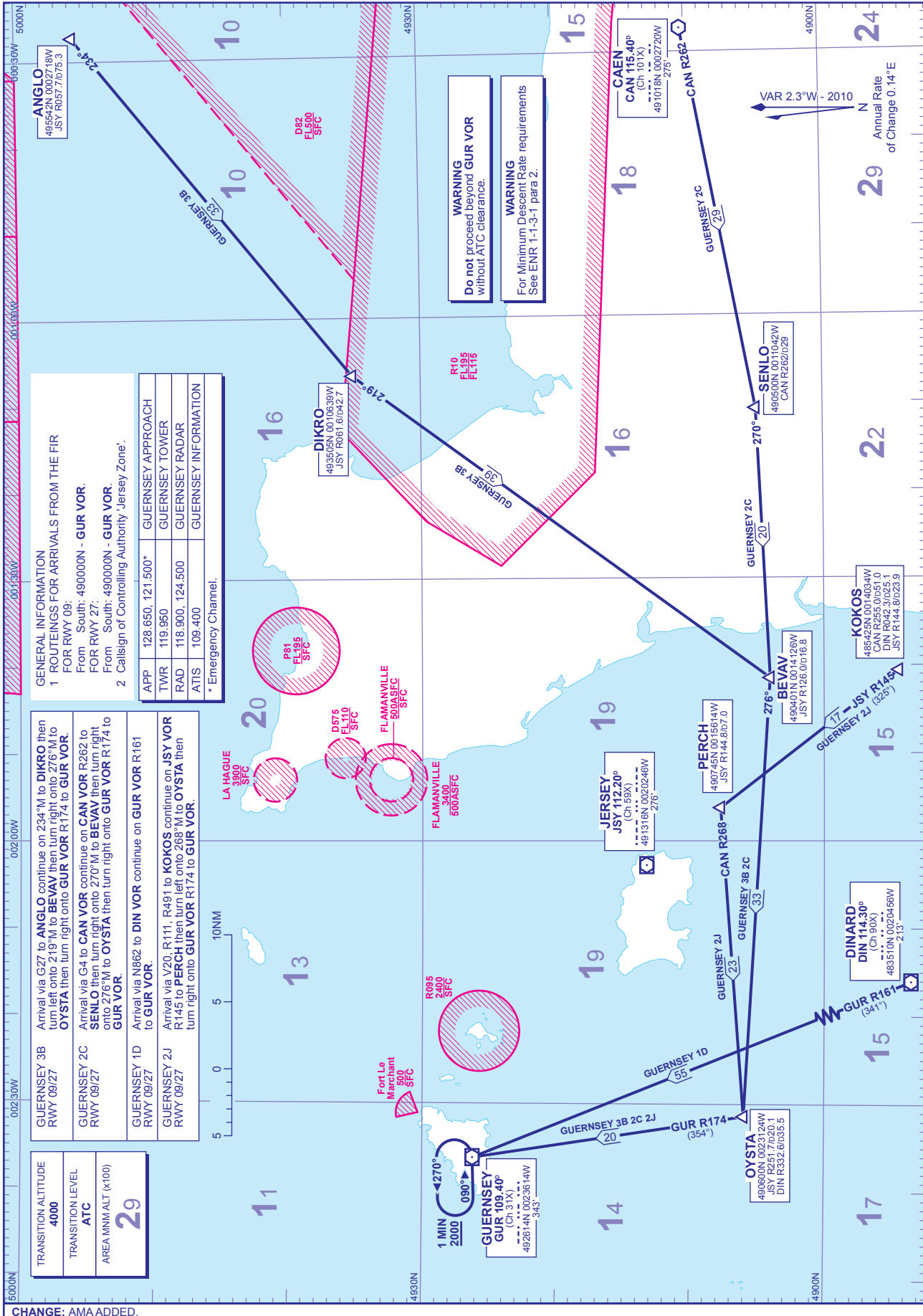


STANDARD ARRIVAL CHART - INSTRUMENT (STAR) - ICAO

DISTANCES IN NAUTICAL MILES
BEARINGS, TRACKS AND RADIALS ARE MAGNETIC
ALTITUDES AND ELEVATIONS ARE IN FEET

GUERNSEY via GUR (south & east)



GENERAL INFORMATION
1 ROUTINGS FOR ARRIVALS FROM THE FIR FOR RWY 09:
From South: 490000N - GUR VOR.
From South: 490000N - GUR VOR.
2 Callsign of Controlling Authority 'Jersey Zone'.

APP	128.650, 121.500*	GUERNSEY APPROACH
TWR	119.950	GUERNSEY TOWER
RAD	118.900, 124.500	GUERNSEY RADAR
ATIS	109.400	GUERNSEY INFORMATION

* Emergency Channel.

GUERNSEY 3B RWY 09/27	Arrival via G27 to ANGLO continue on 234°M to DIKRO then turn left onto 219°M to BEVAV then right onto 276°M to OYSTA then turn right onto GUR VOR R174 to GUR VOR .
GUERNSEY 2C RWY 09/27	Arrival via G4 to CAN VOR continue on CAN VOR R262 to SENLO then turn right onto 270°M to BEVAV then turn right onto 276°M to OYSTA then turn right onto GUR VOR R174 to GUR VOR .
GUERNSEY 1D RWY 09/27	Arrival via N862 to DIN VOR continue on GUR VOR R161 to GUR VOR .
GUERNSEY 2J RWY 09/27	Arrival via V20, R111, R491 to KOKOS continue on JSY VOR R145 then turn left onto 268°M to OYSTA then turn right onto GUR VOR R174 to GUR VOR .

TRANSITION ALTITUDE	4000
TRANSITION LEVEL	ATC
AREA MNM ALT (x100)	29

CHANGE: AMA ADDED.
AERO INFO DATE 23 DEC 09