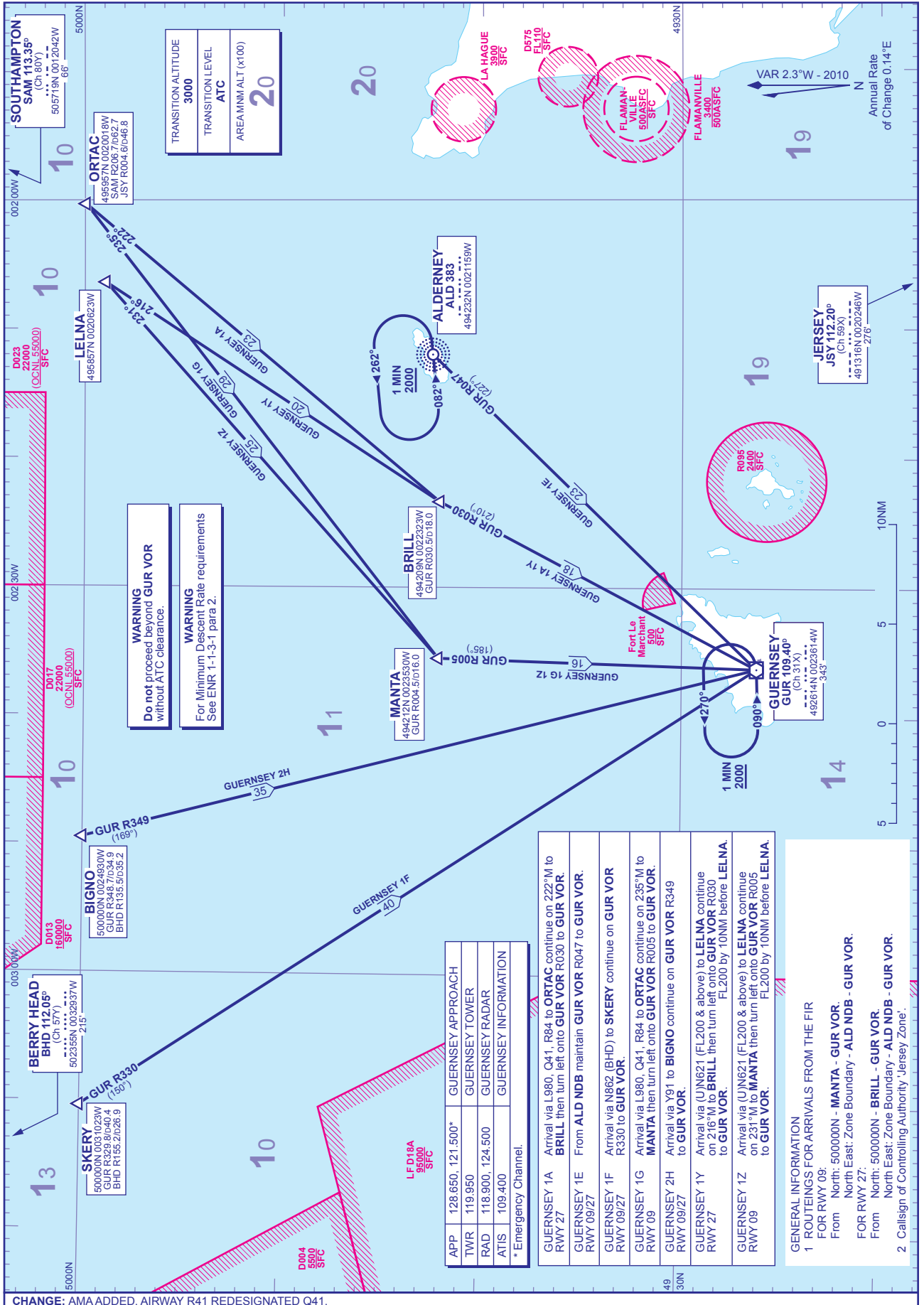


**STANDARD ARRIVAL CHART - INSTRUMENT (STAR) - ICAO**

DISTANCES IN NAUTICAL MILES  
BEARINGS, TRACKS AND RADIALS ARE MAGNETIC  
ALTITUDES AND ELEVATIONS ARE IN FEET

**GUERNSEY via GUR (north)**



**WARNING**  
Do not proceed beyond GUR VOR without ATC clearance.

**WARNING**  
For Minimum Descent Rate requirements See ENR 1-1-3-1 para 2.

APP	128.650, 121.500*	GUERNSEY APPROACH
TWR	119.950	GUERNSEY TOWER
RAD	118.900, 124.500	GUERNSEY RADAR
ATIS	109.400	GUERNSEY INFORMATION
* Emergency Channel.		
GUERNSEY 1A RWY 27	Arrival via L980, Q41, R84 to ORTAC continue on 222°M to BRILL then turn left onto GUR VOR R030 to GUR VOR.	
GUERNSEY 1E RWY 09/27	From ALD NDB maintain GUR VOR R047 to GUR VOR.	
GUERNSEY 1F RWY 09/27	Arrival via N862 (BHD) to SKERY continue on GUR VOR R330 to GUR VOR.	
GUERNSEY 1G RWY 09	Arrival via L980, Q41, R84 to ORTAC continue on 235°M to MANTA then turn left onto GUR VOR R005 to GUR VOR.	
GUERNSEY 2H RWY 09/27	Arrival via Y91 to BIGNO continue on GUR VOR R349 to GUR VOR.	
GUERNSEY 1Y RWY 27	Arrival via (UN621 (FL200 & above) to LELMA continue on 216°M to BRILL then turn left onto GUR VOR R030 to GUR VOR.	
GUERNSEY 1Z RWY 09	Arrival via (UN621 (FL200 & above) to LELMA continue on 231°M to MANTA then turn left onto GUR VOR R005 to GUR VOR.	

**GENERAL INFORMATION**

1 ROUTINGS FOR ARRIVALS FROM THE FIR FOR RWY 09:  
From North: 500000N - MANTA - GUR VOR.  
North East: Zone Boundary - ALD NDB - GUR VOR.

FOR RWY 27:  
From North: 500000N - BRILL - GUR VOR.  
North East: Zone Boundary - ALD NDB - GUR VOR.

2 Call sign of Controlling Authority 'Jersey Zone'.

CHANGE: AMA ADDED. AIRWAY R41 REDESIGNATED Q41.

AERO INFO DATE 23 DEC 09