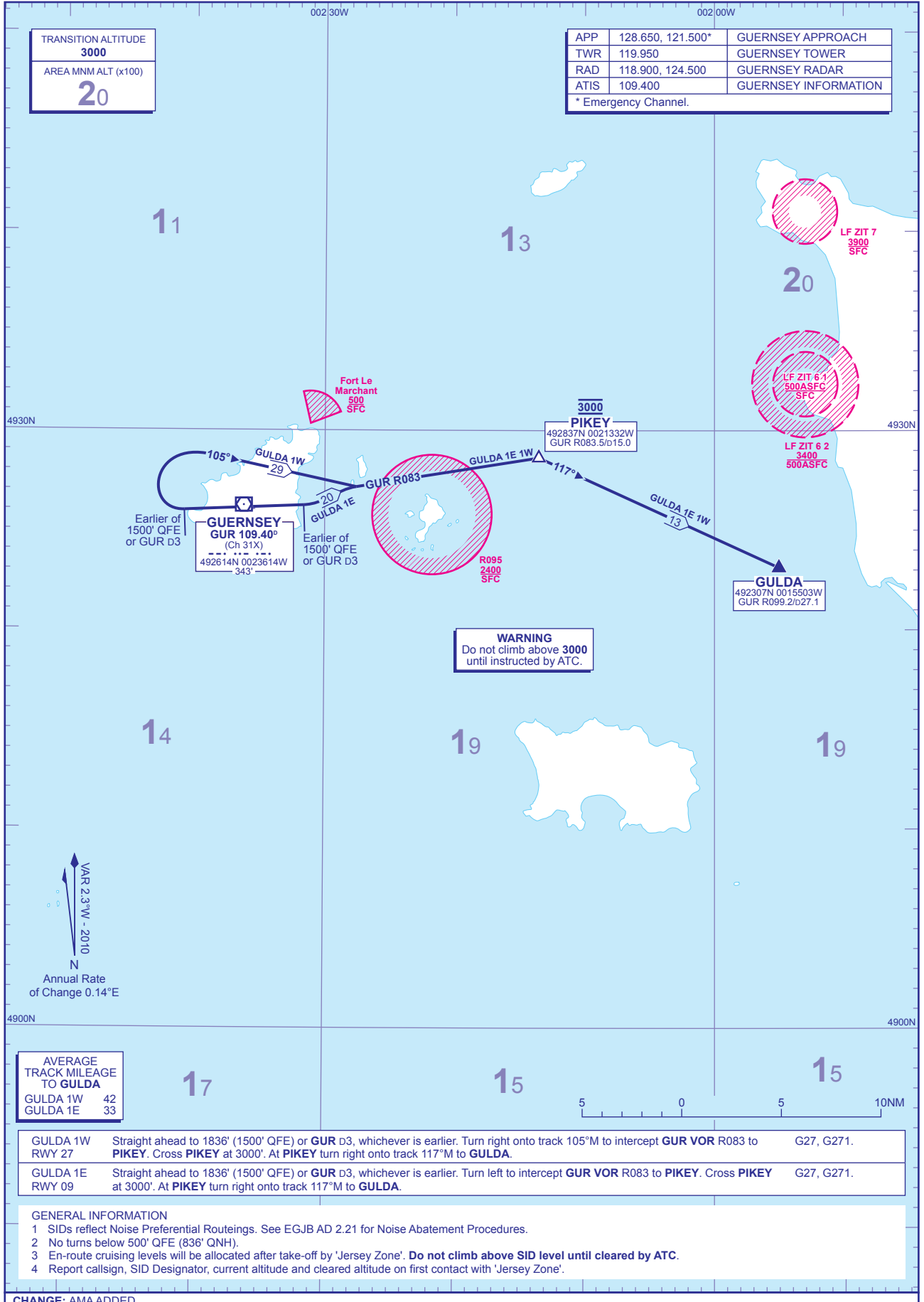


**STANDARD DEPARTURE CHART - INSTRUMENT (SID) - ICAO**

DISTANCES IN NAUTICAL MILES  
BEARINGS, TRACKS AND RADIALS ARE MAGNETIC  
ALTITUDES AND ELEVATIONS ARE IN FEET

**GUERNSEY  
GULDA**



TRANSITION ALTITUDE	3000
AREA MNM ALT (x100)	20

APP	128.650, 121.500*	GUERNSEY APPROACH
TWR	119.950	GUERNSEY TOWER
RAD	118.900, 124.500	GUERNSEY RADAR
ATIS	109.400	GUERNSEY INFORMATION

\* Emergency Channel.

AVERAGE TRACK MILEAGE TO GULDA	
GULDA 1W	42
GULDA 1E	33

GULDA 1W RWY 27	Straight ahead to 1836' (1500' QFE) or GUR D3, whichever is earlier. Turn right onto track 105°M to intercept GUR VOR R083 to PIKEY. Cross PIKEY at 3000'. At PIKEY turn right onto track 117°M to GULDA.	G27, G271.
GULDA 1E RWY 09	Straight ahead to 1836' (1500' QFE) or GUR D3, whichever is earlier. Turn left to intercept GUR VOR R083 to PIKEY. Cross PIKEY at 3000'. At PIKEY turn right onto track 117°M to GULDA.	G27, G271.

- GENERAL INFORMATION**
- SIDs reflect Noise Preferential Routings. See EGJB AD 2.21 for Noise Abatement Procedures.
  - No turns below 500' QFE (836' QNH).
  - En-route cruising levels will be allocated after take-off by 'Jersey Zone'. Do not climb above SID level until cleared by ATC.
  - Report callsign, SID Designator, current altitude and cleared altitude on first contact with 'Jersey Zone'.

CHANGE: AMA ADDED.  
AERO INFO DATE 23 DEC 09