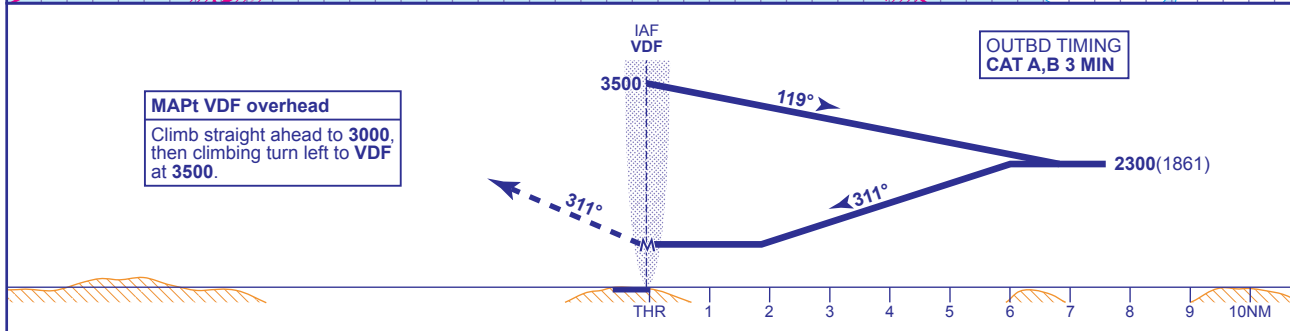
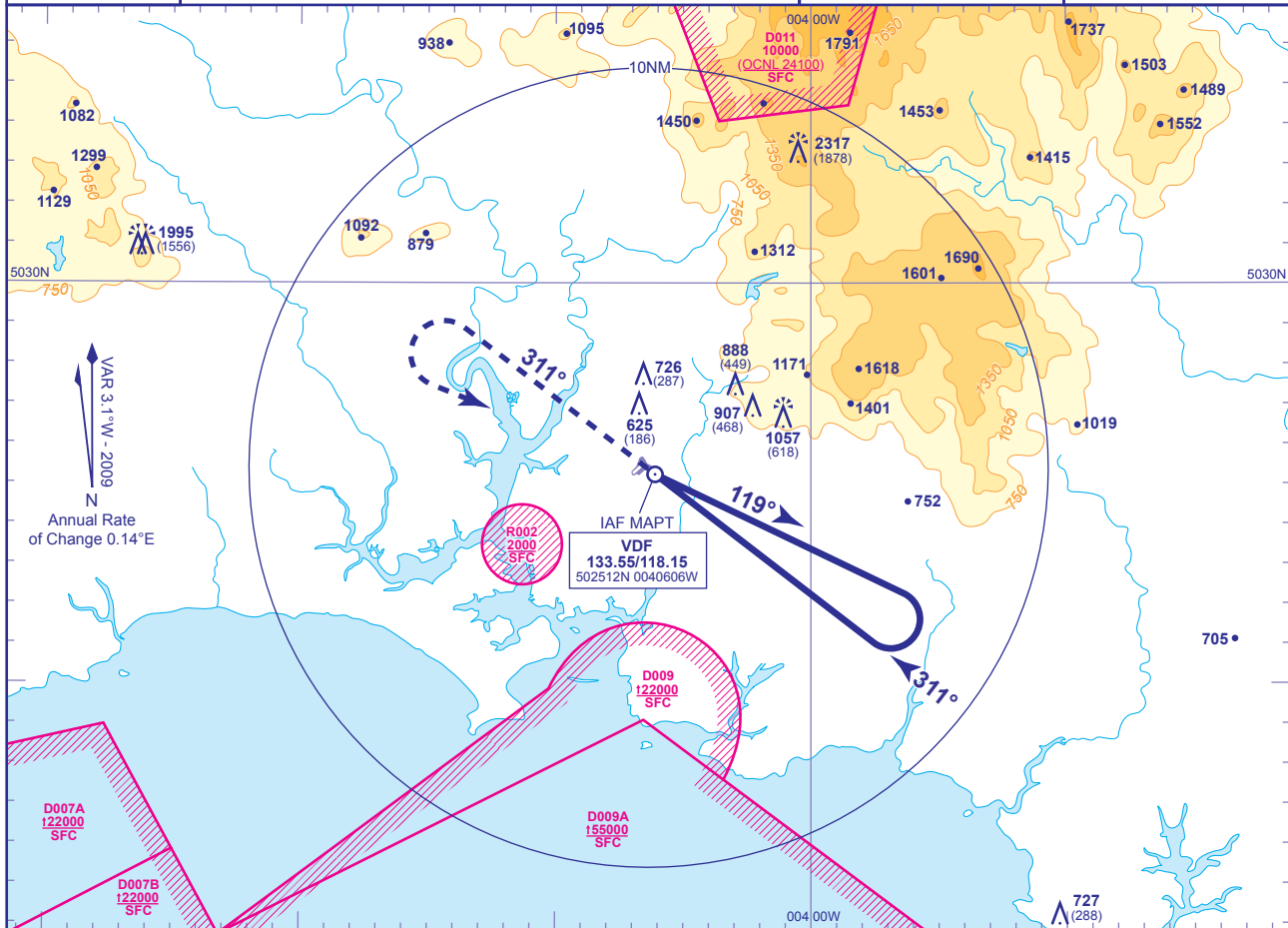


INSTRUMENT APPROACH CHART - ICAO

PLYMOUTH VDF
RWY 31
 (ACFT CAT A,B)

	APP 133.550	PLYMOUTH APPROACH	AD ELEVATION 476
	TWR 118.150	PLYMOUTH TOWER	THR ELEVATION 439
			OBSTACLE ELEVATION 2317 AMSL (1878) (ABOVE THR)
			BEARINGS ARE MAGNETIC
			TRANSITION ALTITUDE 3000



Aircraft Category		A	B
OCA (OCH)	Procedure	1080(641)	1080(641)
VM(C)OCA (OCH AAL)	Total Area	1080(604)	1080(604)

NOTE 1 Lowest altitude to commence procedure is 3500.
 2 FAT offset by 5.5° from RWY C/L.

CHANGE: MAG VAR. PAGE NUMBER.

AERO INFO DATE 17 JUL 09