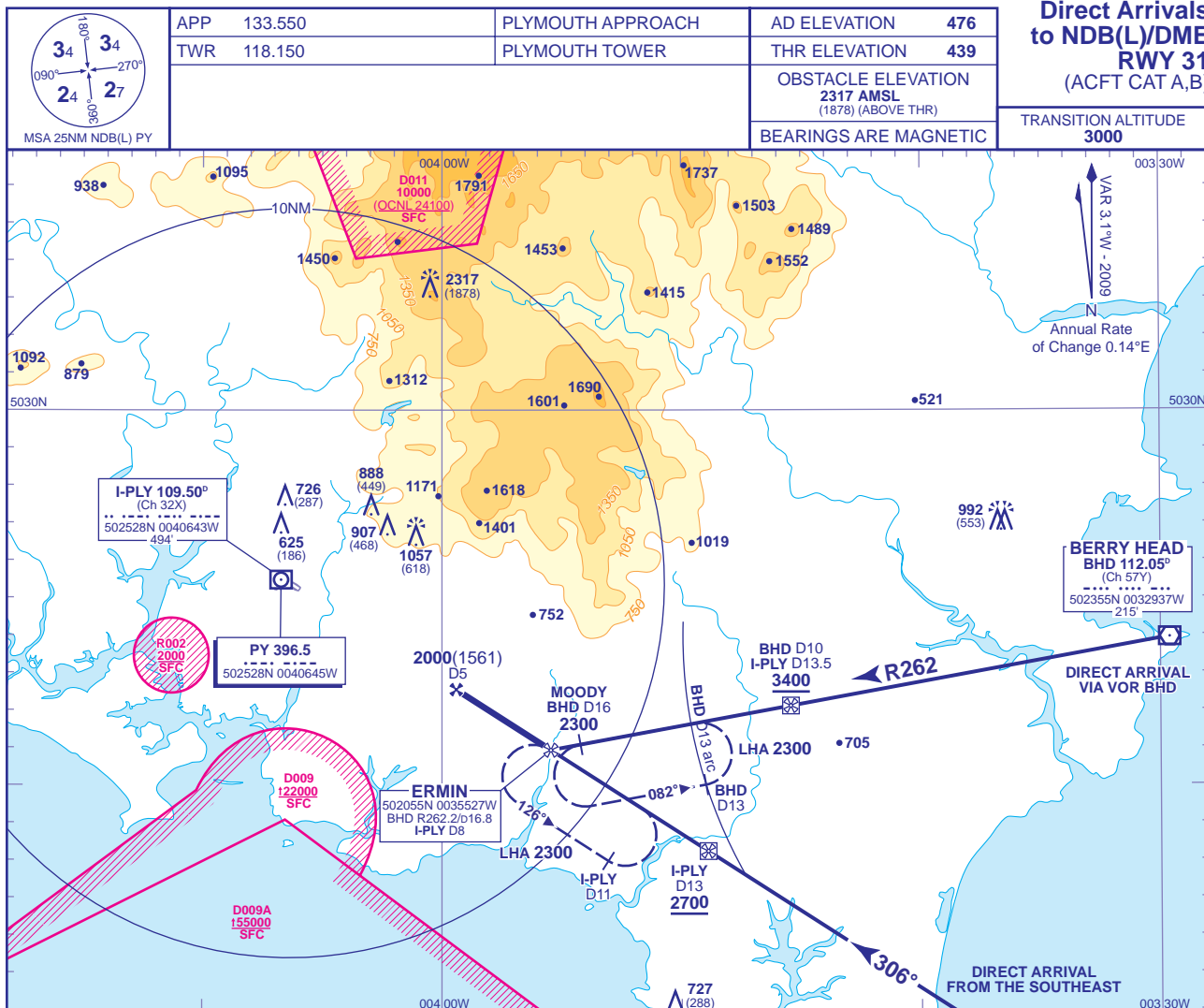


INSTRUMENT APPROACH CHART - ICAO

PLYMOUTH
Direct Arrivals to NDB(L)/DME RWY 31
 (ACFT CAT A,B)



DIRECT ARRIVAL PROCEDURES
From the East via VOR BHD R262:
 Arrival **not below MSA** or **3000**, whichever is higher, to intercept and follow VOR BHD R262. From IAF (VOR BHD R262, BHD DME 10, I-PLY DME 13.5), continue on VOR BHD R262 descend to **2300**(1861) prior to intercepting extended FAT (intercept at BHD R262 BHD D16.8 NDB(L) PLY QDM 306° I-PLY D8), turn right to follow NDB(L) PY QDM 306° to the FAF, then continue as for Main Procedure.
From the Southeast via NDB(L) PY QDM 306°:
 Arrival **not below MSA** to intercept and follow NDB(L) PY QDM 306°. After passing IAF (NDB(L) PY QDM 306°, I-PLY DME 13) descend as necessary to be at **2000**(1561) by the FAF, then continue as for Main Procedure. Aircraft requiring to hold at MOODY should join the holding pattern via VOR BHD DME 13 arc and BHD R262.
Procedure from MOODY Holding Pattern:
 Arrival to MOODY **not below MSA**. Descend in hold as necessary, to be at **2300**. After passing MOODY to commence Final Approach, turn right to establish on extended FAT, descend to **2000**(1561), then as for Main Procedure.

NOTE 1 Aircraft on direct arrivals may be required to hold at ERMIN or MOODY.
2 Lowest altitude for holding at ERMIN or MOODY is **2300** (Aircraft will normally be required to hold not lower than FL40).
3 VOR DME BHD is **NOT** monitored at Plymouth.

CHANGE: MAG VAR. PAGE NUMBER. DIRECT ARRIVAL FROM BERRYHEAD. HOLD ON MOODY. DIRECT ARRIVAL TO NDB(L) DME.