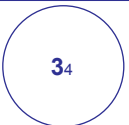
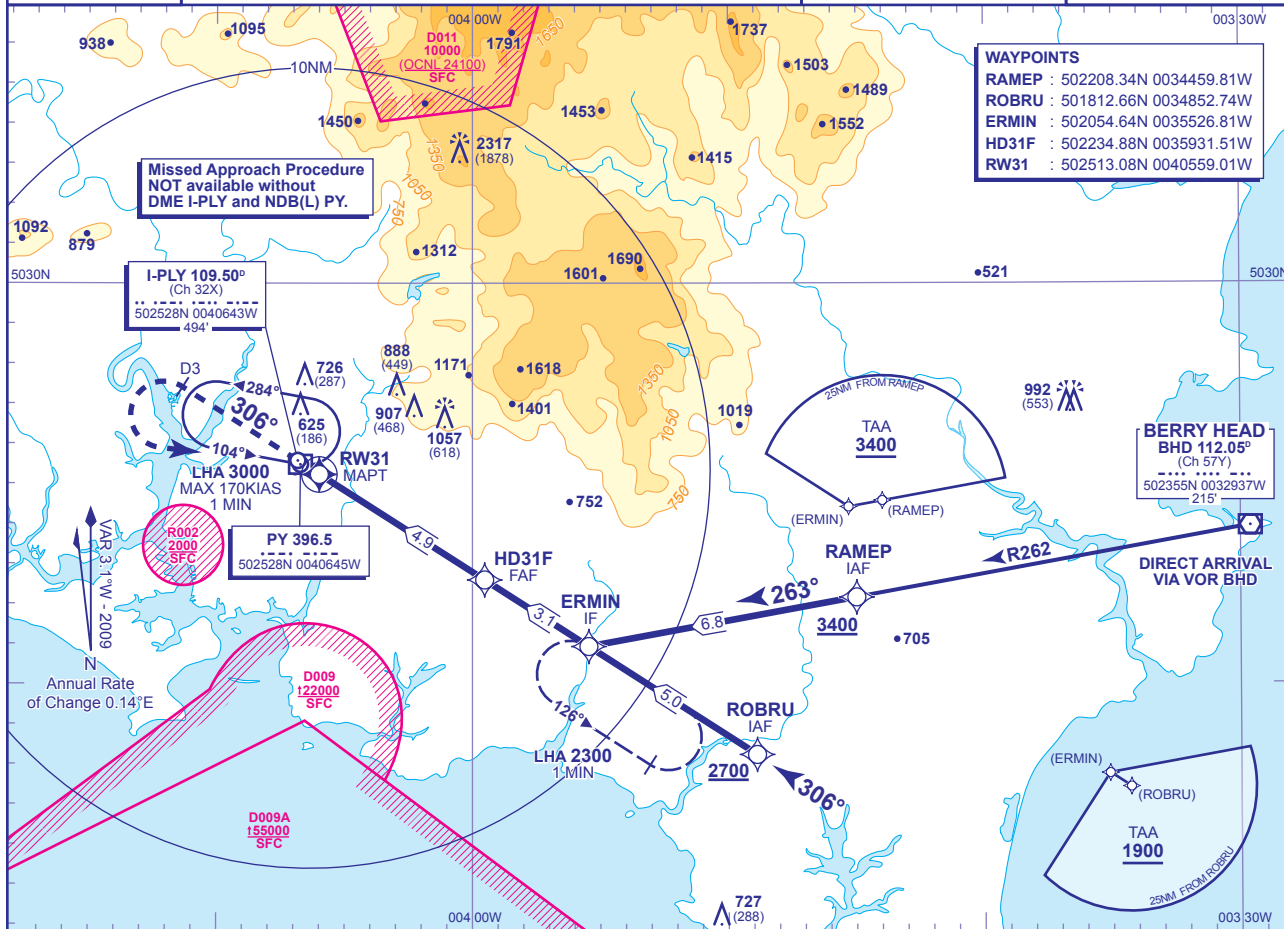


INSTRUMENT APPROACH CHART - ICAO

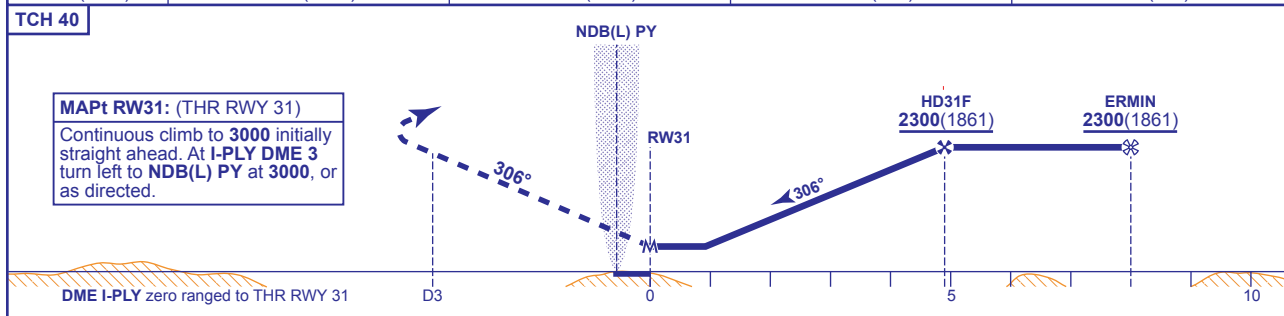
**PLYMOUTH
RNAV(GNSS)
RWY 31
(ACFT CAT A,B)**

 <p>MSA 25NM ARP</p>	APP 133.550	PLYMOUTH APPROACH	AD ELEVATION 476
	TWR 118.150	PLYMOUTH TOWER	THR ELEVATION 439
			OBSTACLE ELEVATION 2317 AMSL (1878) (ABOVE THR)
			BEARINGS ARE MAGNETIC
			TRANSITION ALTITUDE 3000



RECOMMENDED PROFILE Gradient 6.12%, 370FT/NM

NM to RW31	4	3	2	1
ALT(HGT)	1970(1531)	1590(1151)	1220(781)	850(411)



Aircraft Category		A	B	Rate of descent	G/S KT				
OCA (OCH)	LNAV	820(381)	820(381)		FT/MIN	160	140	120	100
VM(C)OCA (OCH AAL)	Total Area	960(484)	1050(574)		990	870	740	620	500

NOTE 1 Missed Approach Procedure shall be converted to a conventional Missed Approach upon reaching I-PLY DME 3.
NOTE 2 See AD 2-EGHD-8-9 for data coding tables.
NOTE 3 Missed Approach procedure not available without DME I-PLY.

CHANGE: NEW CHART.

AERO INFO DATE 17 JUL 09